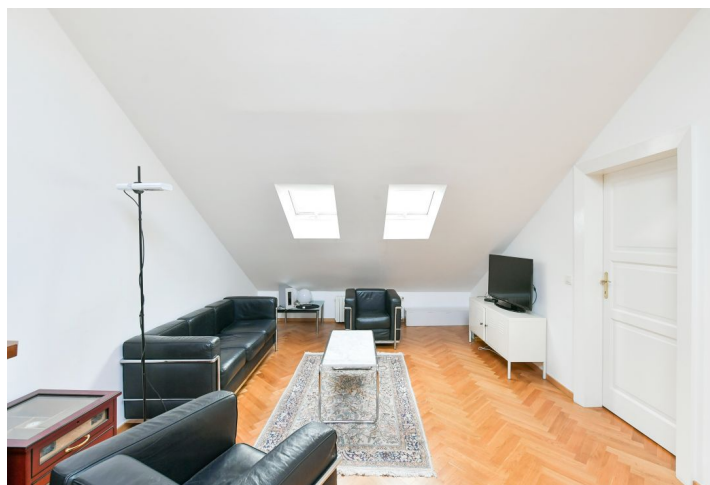




Apartment One-bedroom (2+kk)

€ 461 107 | CZK 11 500 000

66 m², Prague 1, Staré Město, Benediktská





Apartment One-bedroom (2+kk)

€ 461 107 | CZK 11 500 000

66 m², Prague 1, Staré Město, Benediktská

| | |
|------------------|-------------------|
| Total area | 66 m² |
| Parking | - |
| Cellar | - |
| Service price | 3 212 CZK monthly |
| PENB | G |
| Reference number | 100346 |

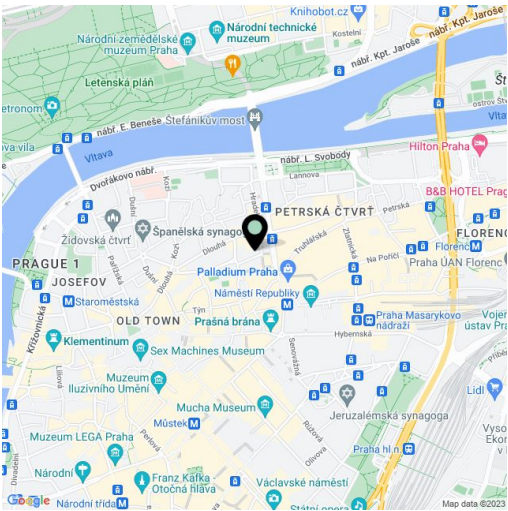
This recently reconstructed attic apartment is situated on the 5th floor of a classic brick building with an elevator. This nicely maintained apartment building is located in an attractive place on a side street near Republic Square in the very center of Prague.

The layout consists of a living room with a dining area and a hallway, a separate kitchen, 1 bedroom, and a bathroom (with a bathtub, toilet, and bidet).

The apartment was approved in 2020. Facilities include renovated wooden floors, new doors, and skylights. As part of the layout change in 2020, a new bathroom with heated tiles was built. Heating is by a gas boiler. The building is well-maintained and has a modern elevator.

The location makes it possible to have all services at your fingertips; there are 2 shopping centers in the immediate vicinity, many other shops, restaurants, cafes, and clubs, as well as cinemas and theaters. A metro station and tram stop are about a 2-minute walk from the building.

Floor area 66.06 m².



* Size of the unit according to the Housing Act.
The area consists of the sum total of the internal area of every room.



Apartment One-bedroom (2+kk)

€ 461 107 | CZK 11 500 000

66 m², Prague 1, Staré Město, Benediktská



| Podlahová plocha podkroví od 1200mm (obytná plocha podkroví) | | | |
|--|---------------|----------|--|
| 101 | Předsíň | 2,16 | |
| 102 | Obývací pokoj | 24,81 | |
| 103 | Ložnice | 16,62 | |
| 104 | Kuchyně | 5,68 | |
| 105 | Koupelna | 7,53 | |
| | | 56,80 m² | |

| Podlahová plocha celého podkroví | | | |
|----------------------------------|---------------|----------|--|
| 101 | Předsíň | 2,16 | |
| 102 | Obývací pokoj | 28,92 | |
| 103 | Ložnice | 21,77 | |
| 104 | Kuchyně | 5,68 | |
| 105 | Koupelna | 7,53 | |
| | | 66,06 m² | |