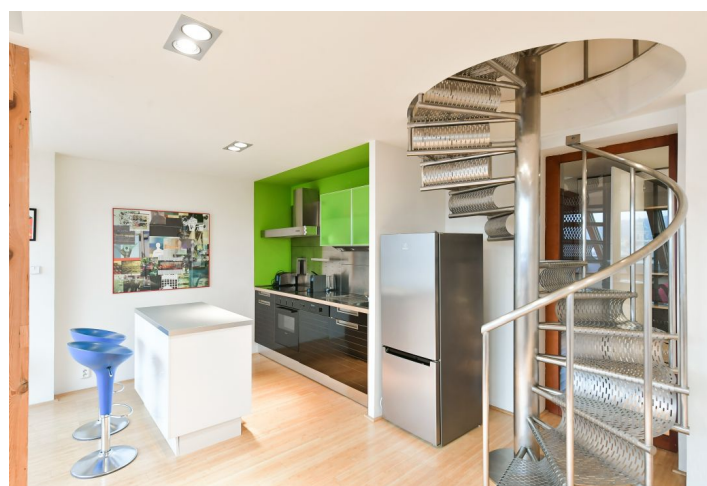




## Apartment One-bedroom (2+kk)

Rented

89.5 m², Prague 1, Malá Strana, U železné lávky





# Apartment One-bedroom (2+kk)

Rented

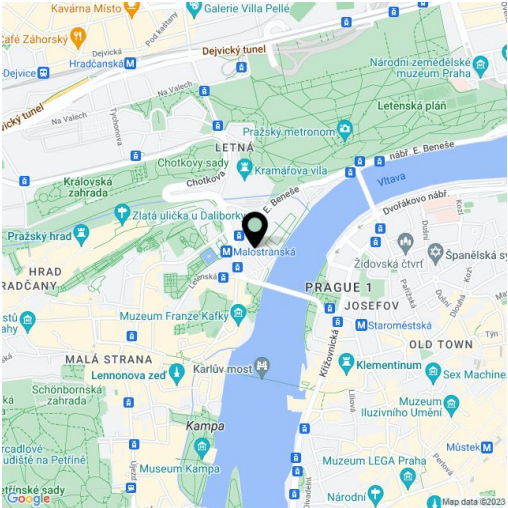
89.5 m², Prague 1, Malá Strana, U železné lávky

Total area	90 m²
Parking	-
Cellar	-
Service price	Deposit for building services CZK 700/person/month. Deposit for gas, electricity and water CZK 7,080/month, second person + CZK 280/month.
PENB	G
Reference number	100475
Available from	Immediately

Boasting unprecedented views of Prague Castle, Petřín Hill, Old Town, the Vltava River, Charles Bridge, and the National Theater, this high-standard, fully furnished 1-bedroom split-level attic apartment is situated on the 4th topmost floor of a well-maintained renovated late 19th century building with an elevator and a beautifully landscaped green courtyard, in close vicinity of Letná Park, a five min. walk from Malostranské Square, within walking distance of Old Town, amenities, and services. The building is fronted by a small park immediately across from the Malostranská metro station and tram stop.

The lower level of the apartment features a living room with a fully fitted open plan kitchen and a skylight with **beautiful views**, a shower room with a toilet, and an entrance hall with built-in wardrobes. The upper floor includes a gallery with a bedroom.

**Air-conditioning, hardwood parquet floors, tiles, gas boiler, washing machine, induction cooktop.**



\* Area of the unit according to the Civil Code. The area consists of the sum total area of the entire unit bounded by perimeter walls.