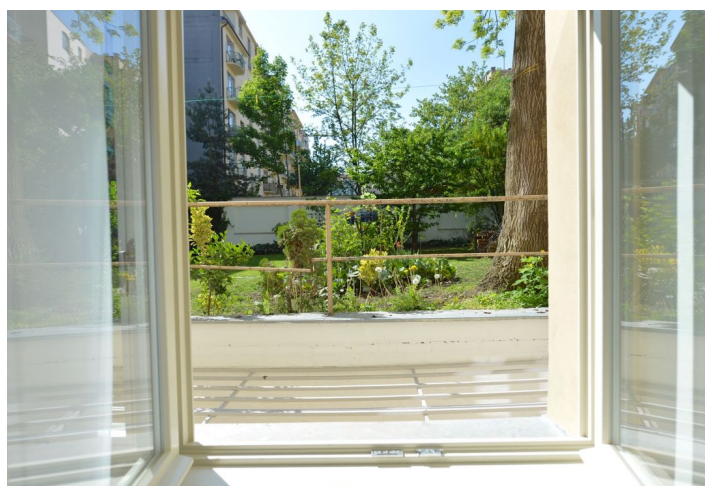
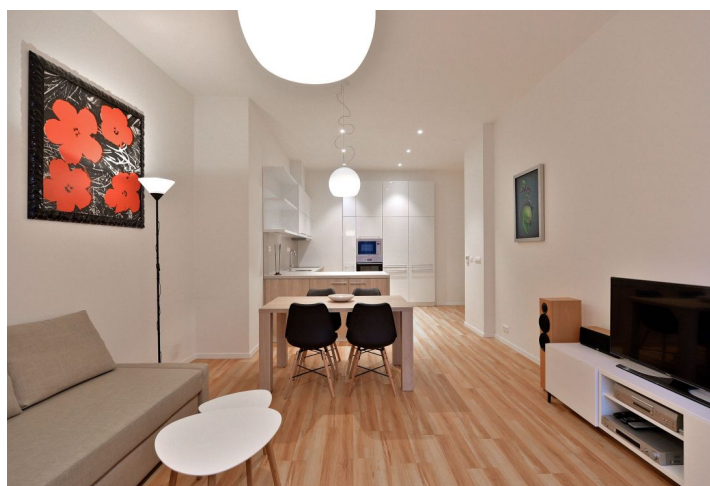




Apartment One-bedroom (2+kk)

€ 437 137 | CZK 10 900 000

65 m², Prague 7, Bubeneč, Ověnecká





Apartment One-bedroom (2+kk)

€ 437 137 | CZK 10 900 000

65 m², Prague 7, Bubeneč, Ovinecká

Total area	65 m²
Parking	Garage parking space in the parking lift at extra cost
Garage	Yes
Cellar	Yes
Service price	4 640 CZK monthly
PENB	D
Reference number	100562

This bright apartment is set in a modern residence with an attractive address on one of the nicest streets in Letná near the extensive Stromovka Park.

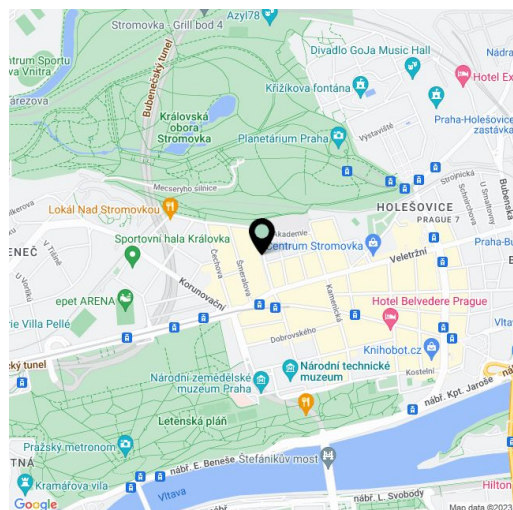
The layout of the unit on the elevated ground floor consists of a living room with a dining area and kitchen, 1 bedroom, a bathroom (with a shower and toilet) and an entrance hall. The apartment faces a **quiet inner courtyard with landscaped greenery**.

Thanks to the large windows, the apartment is **pleasantly bright**. Floors are vinyl; facilities include a security entrance door and a **videophone**, a complete kitchen, and **plenty of built-in wardrobes**. A **large cellar storage unit** is part of the purchase price. The apartment building from 1923 by an important architect, reconstructed in 2015, has **elegant common areas**. The entrance to the building is via a chip. You can purchase a **garage parking space** in an automated system.

An excellent location within easy reach of cafes, restaurants, bistros, a supermarket, small shops, and tram stops from which you can reach the city center or the Hradčanská and Vltavská metro stations in about 5 minutes. The **Stromovka and Letenské Sady Parks** are a few steps away. The district also offers a wide range of cultural activities, for instance in the nearby **National Gallery or art house cinema**.

Floor area 65 m², cellar 7.6 m².

The apartment is currently rented until 11/2024.



* Area of the unit according to the Civil Code. The area consists of the sum total area of the entire unit bounded by perimeter walls.



Apartment One-bedroom (2+kk)

€ 437 137 | CZK 10 900 000

65 m², Prague 7, Bubeneč, Ověnecká

