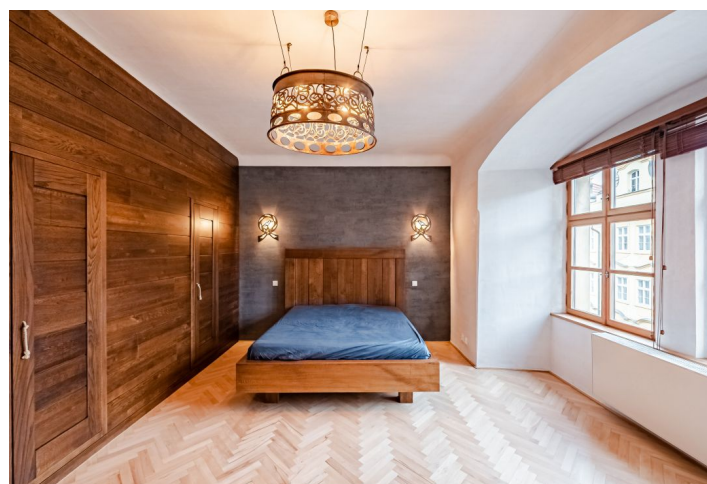




## Apartment Two-bedroom (3+kk)

Rented

98 m², Prague 1, Malá Strana, Mostecká





# Apartment Two-bedroom (3+kk)

Rented

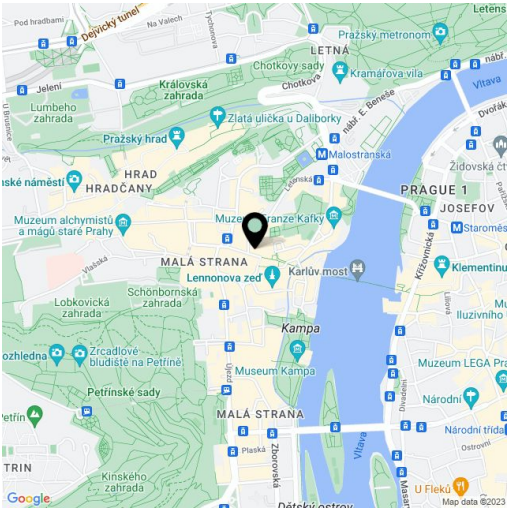
98 m², Prague 1, Malá Strana, Mostecká

Total area	98 m²
Parking	Parking is available in a nearby hotel.
Garage	Yes
Cellar	10 m²
Service price	Service charges, utilities, and Internet: CZK 6,000 per month.
Reference number	100654
Available from	Immediately

Boasting an attractive location, this completely renovated furnished 2-bedroom apartment with preserved original details is on the second floor of a fully refurbished historic building with courtyard terraces and an elevator, dating back to the 14th century. Built in the era of Charles IV by renowned architect Petr Parléř, it enjoys an exclusive historic location in the very center of the picturesque Malá Strana neighborhood. It stands in the immediate vicinity of Charles Bridge just moments from Malostranské Square with tram connections, within walking distance of Prague Castle and just a few minutes' walk to the Malostranská metro station (line A).

The picturesque interior features a living room with a fully fitted open plan kitchen and dining area, a master bedroom with a large fitted walk-in closet, a second bedroom, a bathroom including a bathtub and a toilet, and an entrance hall. The apartment is entered through the courtyard terrace.

Hardwood parquet floors, tiles, security entry door, new soundproofed windows, hardwood furniture, gas boiler, underfloor heating in the bathroom, interior teak blinds, Siemens washer and dryer, dishwasher, induction cooktop, microwave oven, video entry phone, satellite connection, cellar, chip operated elevators. Parking is available in a nearby hotel at CZK 7,000/month plus wellness facilities at CZK 3,000/month. Mid-term rental is available (minimum of 6 months).



\* Area of the unit according to the Civil Code. The area consists of the sum total area of the entire unit bounded by perimeter walls.