



House Five-bedroom (6+kk)

€ 748 685 | CZK 18 500 000

231 m², Praha-západ, Jesenice





House Five-bedroom (6+kk)

€ 748 685 | CZK 18 500 000

231 m², Praha-západ, Jesenice

Usable area	231 m ²
Plot	732 m ²
Foot print	139 m ²
Garden	593 m ²
Floor area	183 m ²
Balcony	5 m ²
Terrace	43 m ²
Parking	-
Cellar	-
Reference number	101276

This brick family house with a gable roof is surrounded by a flat garden in the newer residential area of Jesenice. This town on the outskirts of Prague is excellently accessible by suburban transport and by car along the D0 Ring Road.

The ground floor consists of a living room with an adjoining kitchen and dining room, 2 rooms (1 created from the original garage), a toilet, a storage room accessible from the outside, a staircase, and an entrance hall. The living and dining room are connected to the **garden terrace**. Three bedrooms are upstairs, two of which have access to the **balcony**, complete with a bathroom.

The insulated brick building was approved in June 2011. All rooms have **air-conditioning, underfloor heating** throughout (except for the room that was formerly a garage). Heating is by a Baxi gas boiler. Windows are plastic with double glazing; floor are floating laminate; the entrance door is plastic and the interior **Sapeli** doors are veneered. Parking can be arranged by building a carport. Facilities include a **security system** with an alarm. The northwest-facing garden is maintained by an **automatic irrigation system**.

The residential area is located in a part of Jesenice off of the main road. There is a supermarket, a pharmacy, and a pastry shop are not far from the house. There is an elementary school and a public and private kindergarten in town, and the prestigious **Sunny Canadian School** is a 3-minute drive away. Driving to Prague takes just a few minutes by suburban bus or car, and the D1 highway is also nearby. It is possible to drive to **Průhonice Park** or one of the vast **surrounding forests**.

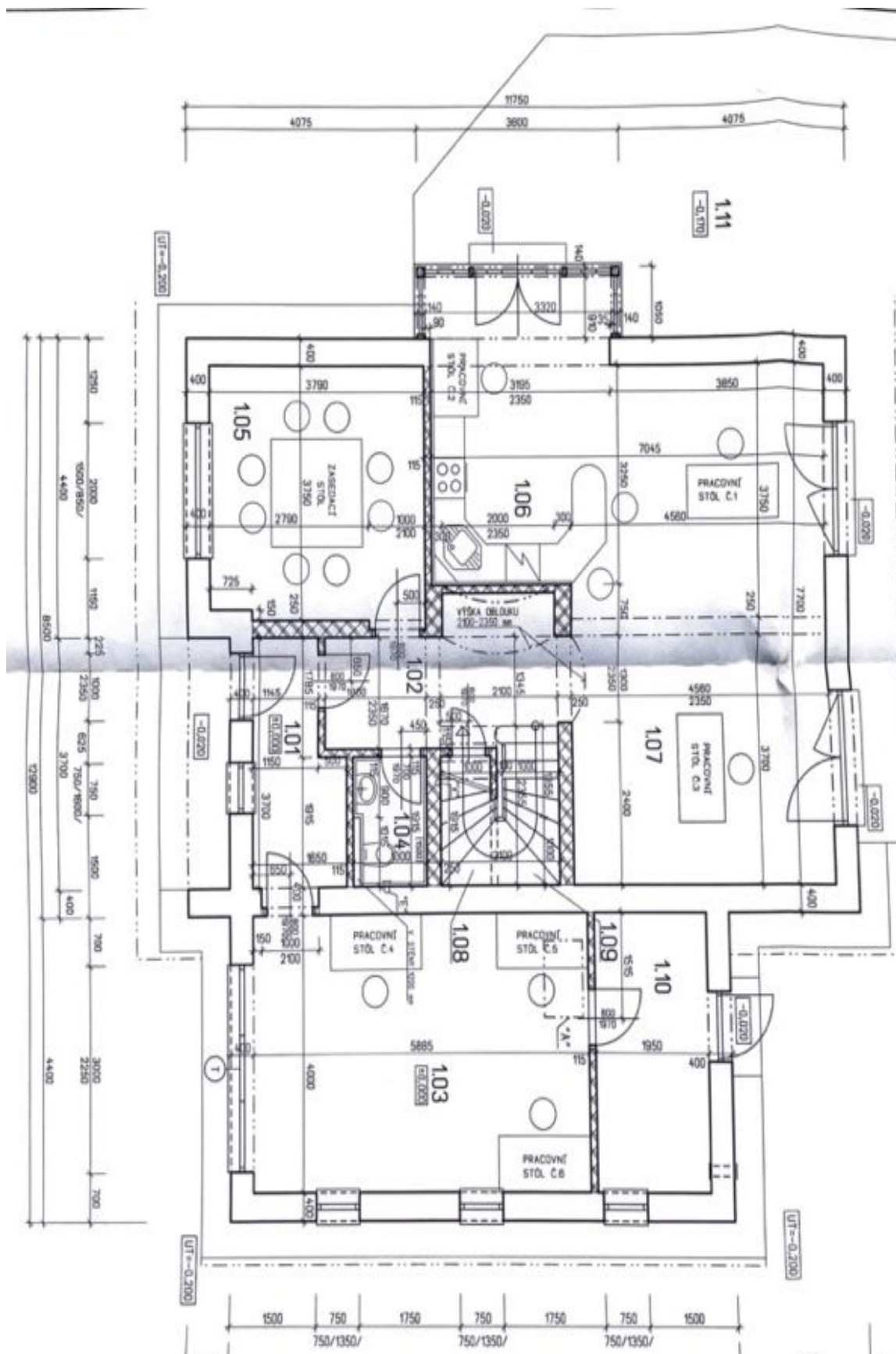
Usable area 230.7 m² (of which the interior is 183 m², terrace 42.5 m², and balcony 5.2 m²), built-up area 139 m², garden 593 m², plot 732 m².



House Five-bedroom (6+kk)

€ 748 685 | CZK 18 500 000

231 m², Praha-západ, Jesenice





House Five-bedroom (6+kk)

€ 748 685 | CZK 18 500 000

231 m², Praha-západ, Jesenice

