



Apartment Two-bedroom (3+kk)

€ 360 267 | CZK 8 902 200

87.77 m², Jindřichův Hradec, Třeboň, Svobody





Apartment Two-bedroom (3+kk)

€ 360 267 | CZK 8 902 200

87.77 m², Jindřichův Hradec, Třeboň, Svobody

Total area	99 m²
Floor area*	88 m²
Loggia	11 m²
Parking	Parking space at extra cost
Garage	Yes
Cellar	Yes
PENB	B
Reference number	101831

This 2-bedroom apartment with two loggias is part of the Nová Cihelna project, which is currently being built on the site of a former brickyard that was founded in the 17th century, located in the picturesque spa town of Třeboň. Part of a UNESCO biosphere reserve, it lies in the middle of a romantic landscape, ideal for cyclists, fishermen, and lovers of wellness and relaxation. The apartment is suitable for permanent or recreational living as well as for investment purposes. Estimated completion date in September of 2026.

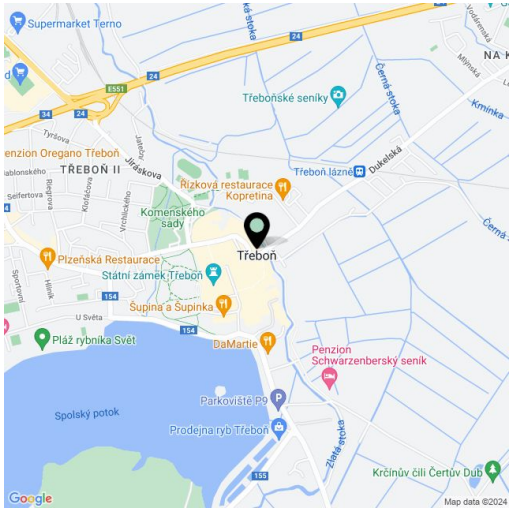
The area of the 1st floor apartment will consist of a living space with a preparation for a kitchen, 2 bedrooms, a bathroom, a separate toilet, a walk-wardrobe, and a foyer. The living room and bedroom will have access to a west-facing loggias.

The facilities include **recuperation**, **underfloor heating**, large-format plastic windows with triple-glazed panes, quality vinyl floors, a security entrance door, **large-format tiles** in the bathroom, and **Grohe** sanitary ware in the modern dark shade of Hard Graphite. It is necessary to purchase a **parking space** and a **cellar storage unit**.

The Nová Cihelna residential project is located in a **quiet part of Třeboň**; it will be within walking distance of the **Aurora Spa** or the **beaches of Svět pond**. You can easily get to the uniquely preserved historic core of the town on foot or by bike. With a rich **spa tradition** and **lively food scene**, it's located in one of the most sought-after recreational places in the Czech Republic, excellently accessible by car, for example, via the D3 highway, but also by public transport (the train station is on the main railway corridor).

Floor area 87.77 m², loggias 5.50 m² a 5.54 m².

For more information, please visit the project website www.nova-cihelna.cz.



* Area of the unit according to the Civil Code. The area consists of the sum total area of the entire unit bounded by perimeter walls.

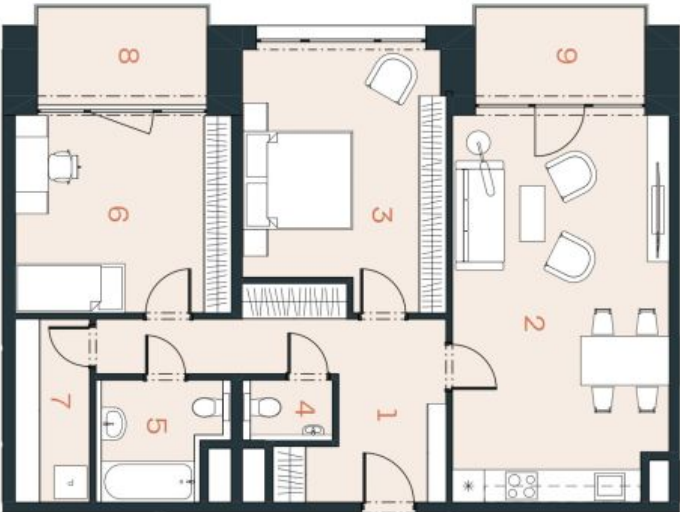


Apartment Two-bedroom (3+kk)

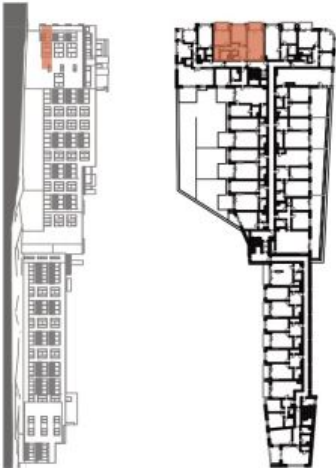
€ 360 267 | CZK 8 902 200

87.77 m², Jindřichův Hradec, Třeboň, Svobody

EXKLUZIVNÍ ZASTOUPENÍ
svoboda&williams | CHRISTIE'S
INTERNATIONAL REAL ESTATE
Na Perštýně 2, 110 00, Praha 1
+420 724 551 238
nova-cihelna.cz
info@nova-cihelna.cz



NOVÁ CIHELNA
TŘEBOŇ



JEDNOTKA	2.16
DISPOZICE	3+KK
PODLAŽÍ	2.NP
Č. Místnost	m²
1 Chodba	14,15
2 Obýtný pokoj + KK	28,12
3 Ložnice	16,97
4 WC	1,81
5 Koupelna	4,87
6 Pokoj	14,40
7 Šatna	4,54
Užitná plocha**	84,86
Podlahová plocha*	87,77
8 Lodžie	5,50
9 Lodžie	5,54
Celková plocha	98,81

*Projekt Nová Cihelna Třeboň si vyhradila právo na změny vzhledu materiálů a informací jsou pouze orientační. Souděbati kupní ceny bytu není náležitý.
Podlahová plocha bytu je včetně plochy přilepk a vnitřních nosných stěn dle výkresu
nařízení 366/2013 Sb.
**Užitná plocha je včetně instalačních předmětů bytu.