



Apartment One-bedroom (2+kk)

€ 236 945 | CZK 5 854 900

58.44 m², Jindřichův Hradec, Třeboň, Svobody





Apartment One-bedroom (2+kk)

€ 236 945 | CZK 5 854 900

58.44 m², Jindřichův Hradec, Třeboň, Svobody

Total area	91 m²
Floor area*	58 m²
Terrace	32 m²
Parking	Parking space at extra cost
Garage	Yes
Cellar	Yes
PENB	B
Reference number	101834

A semi-residential unit with a loggia is part of the Nová Cihelna project, which is currently being built on the site of a former brickyard that was founded in the 17th century, located in the picturesque spa town of Třeboň. Part of a UNESCO biosphere reserve, it lies in the middle of a romantic landscape, ideal for cyclists, fishermen, and lovers of wellness and relaxation. The apartment is suitable for permanent or recreational living as well as for investment purposes. Estimated completion date in September of 2026.

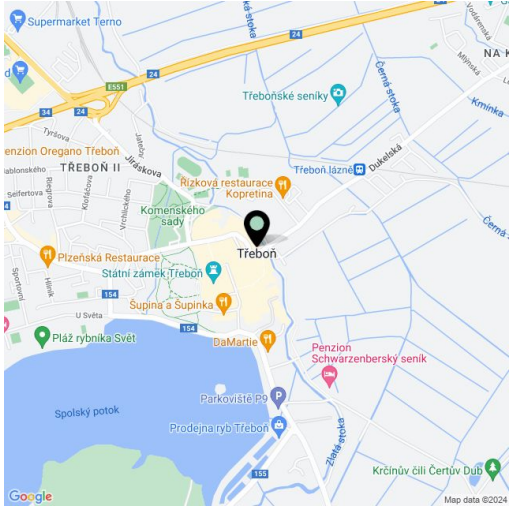
The area of the 1st floor unit will consist of a living space with a preparation for a kitchen, a bedroom, a bathroom, and a foyer. The living room and bedroom will have access to a large terrace.

The facilities include recuperation, underfloor heating, large-format plastic windows with triple-glazed panes, quality vinyl floors, a security entrance door, large-format tiles in the bathroom, and Grohe sanitary ware in the modern dark shade of Hard Graphite. It is necessary to purchase a parking space and a cellar storage unit.

The Nová Cihelna residential project is located in a quiet part of Třeboň; it will be within walking distance of the Aurora Spa or the beaches of Svět pond. You can easily get to the uniquely preserved historic core of the town on foot or by bike. With a rich spa tradition and lively food scene, it's located in one of the most sought-after recreational places in the Czech Republic, excellently accessible by car, for example, via the D3 highway, but also by public transport (the train station is on the main railway corridor).

Floor area 58.44 m², terrace 32.34 m².

For more information, please visit the project website www.nova-cihelna.cz.



* Area of the unit according to the Civil Code. The area consists of the sum total area of the entire unit bounded by perimeter walls.



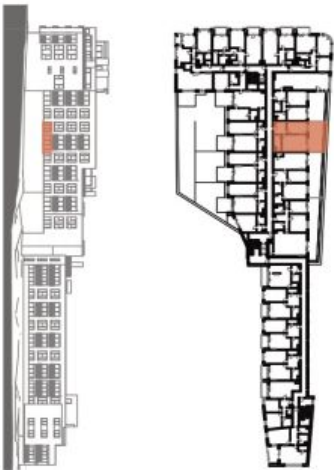
Apartment One-bedroom (2+kk)

€ 236 945 | CZK 5 854 900

58.44 m², Jindřichův Hradec, Třeboň, Svobody

NOVÁ CIHELNA
TŘEBONĚ

EXKLUZIVNÍ ZASTOUPENÍ
svoboda&williams | CHRISTIE'S
INTERNATIONAL REAL ESTATE
Na Perštýně 2, 110 00, Praha 1
+420 724 551 238
nova-cihelna.cz
info@nova-cihelna.cz



JEDNOTKA		2.33 A
DISPOZICE		2+KK
PODLAŽÍ		2.NP
Č.	Místnost	m ²
1	Předsiň	9,57
2	Koupelna	7,14
3	Obýtný pokoj + KK	25,16
4	Ložnice	14,60
Užitná plocha**		56,47
Podlahová plocha*		58,44
5	Terasa	32,34
Celková plocha		90,78

*Projekt Nová Cihelna Třeboň si vyhradila právo na změny vzhledu materiálů a informace jsou pouze orientační. Stavební kúpni ceny bytu není nábytek. Podlahová plocha bytu je včetně plochy přilepk a vnitřních nosných stěn dle výkresu nariadení 366/2013 Sb. **Užitná plocha je včetně instalačních předsazen bytu.