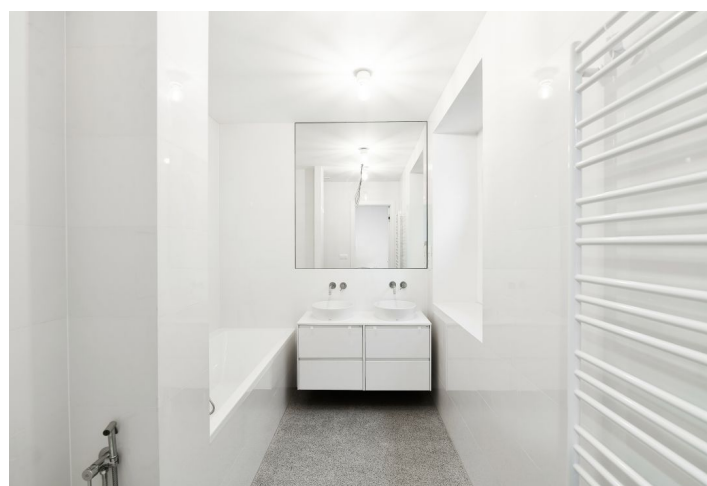
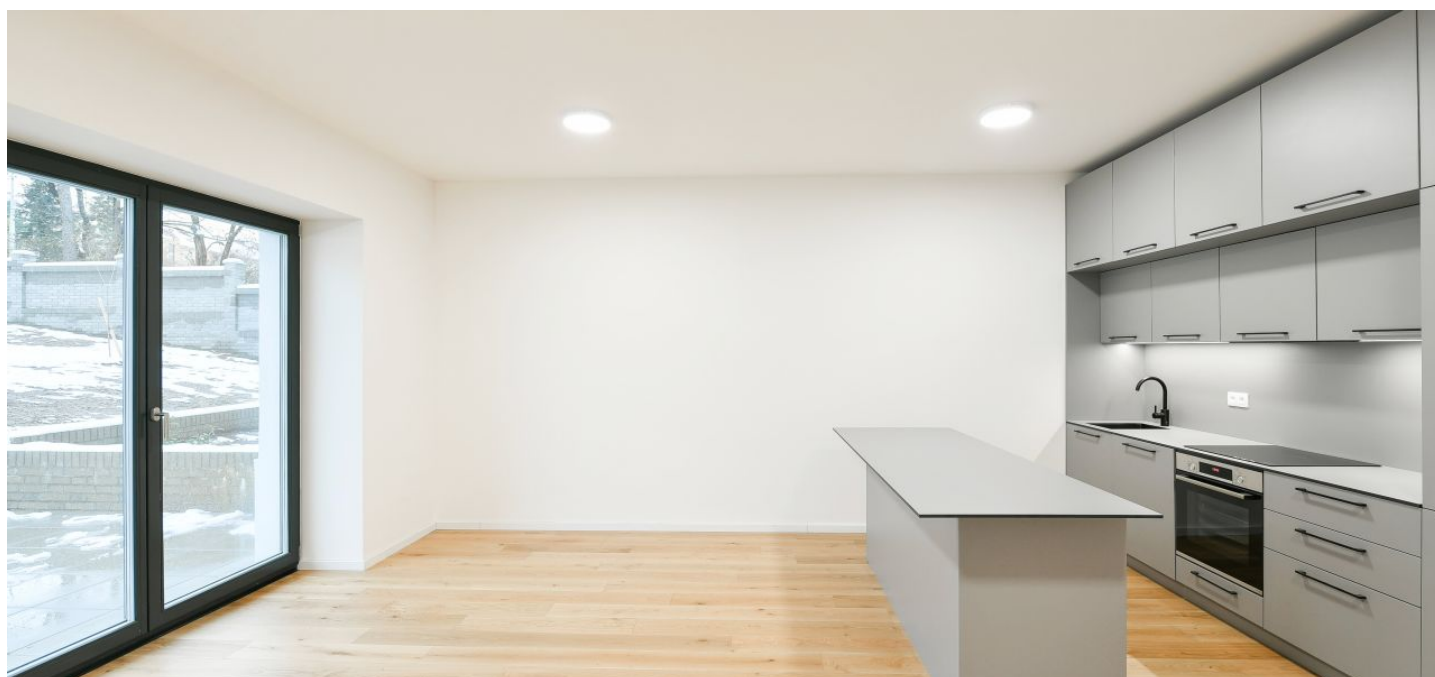




## Apartment Three-bedroom (4+kk)

Rented

113.45 m<sup>2</sup>, Prague 6, Dejvice, Mydlářka





# Apartment Three-bedroom (4+kk)

Rented

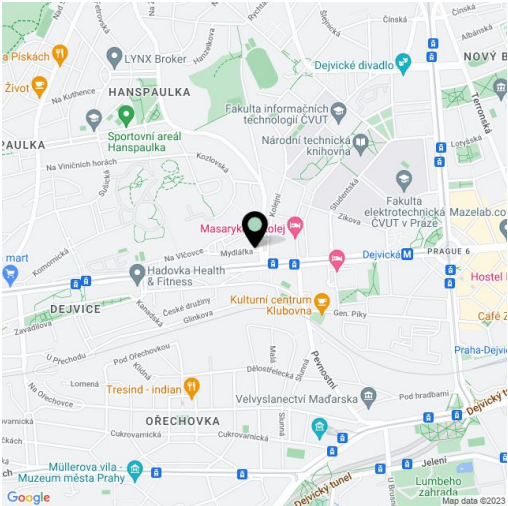
113.45 m², Prague 6, Dejvice, Mydlářka

Total area	134 m²
Floor area*	113 m²
Terrace	20 m²
Parking	Parking spot available.
Cellar	Yes
Service price	Monthly deposit for services and utilities is billed separately.
PENB	C
Reference number	102237
Available from	Immediately

This fully refurbished unfurnished apartment with 2 bathrooms and a 20 sq. m. terrace is set on the lower ground floor of a newly renovated building with an elevator on the edge of the prestigious residential area of Hanspaulka, Prague 6. A great location just minutes from the Czech Technical University campus and Dejvická metro station with very quick access to the city center and full amenities in the area. The apartment is also conveniently located for the airport and numerous international schools.

The interior features a living room with a fully fitted open plan kitchen and **terrace** access, a master bedroom with an en-suite bathroom (bathtub, toilet), a bedroom with terrace access, a third bedroom, a family bathroom (walk-in shower, toilet), and an entrance hall.

**Oak and terrazo floors, casement windows, built-in wardrobes, heat pump, underfloor heating, good insulation, dishwasher, cellar.** A **parking** space on the plot is available at CZK 3,000/month (subject to availability).



\* Area of the unit according to the Civil Code. The area consists of the sum total area of the entire unit bounded by perimeter walls.