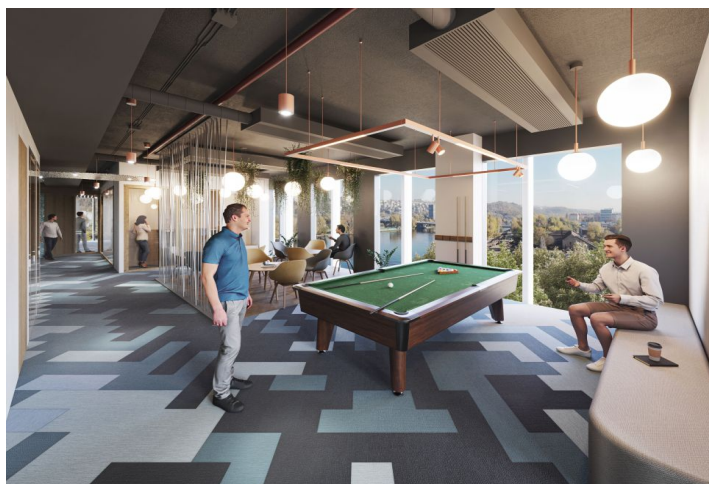
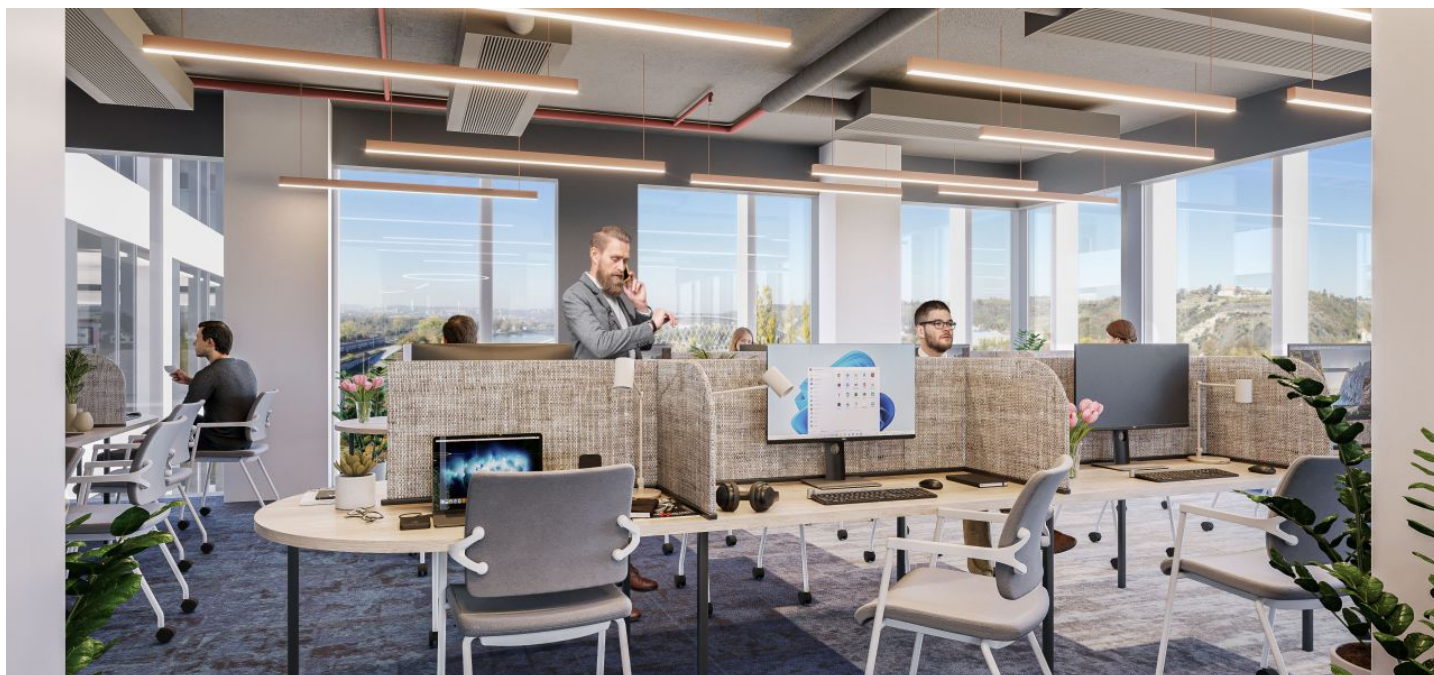




## Office space

Prague 7, Holešovice, Partyzánská

Ask for price





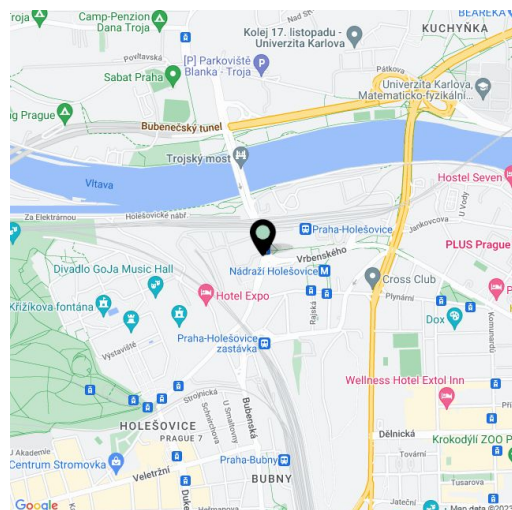


## Office space

Prague 7, Holešovice, Partyzánská

Ask for price

Available area	30 m <sup>2</sup>
Cellar	-
Parking	-
Reference number	102781



The inspirational working environment at the Holešovice riverbank harbor will provide you with facilities within shared offices for both individuals and entire teams.

Private offices, hot desks in a **coworking space**, or even your own Office Suite. The **conference center**, accommodating up to 350 people, will provide excellent facilities for your events. All of these options can be offered to you within shared offices in a modern office building.

The campus-style office complex was constructed with consideration for the environment, creating a unique setting for a healthy balance between work and personal life. In the immediate vicinity, a vibrant new riverbank is emerging, offering a variety of leisure activities.

**Location:**

Excellent transportation accessibility by both car and public transport - in the immediate proximity of the building, there are bus and tram stops. The Holešovice train station and **Nádraží Holešovice metro station (Line C)** are in close vicinity, thanks to a newly built underpass directly from the Nádraží Holešovice metro station.

**Shared offices facilities and services:**

Daily reception  
 Mail and packages reception  
 Accepting phone calls  
 Business manager services  
 Services of a head chef  
 Private café  
 Equipped private offices  
 Company headquarters registration and virtual office  
 Shared meeting and conference rooms  
 Event space for up to 250 persons  
 Call boxes  
 Lounge and shared areas  
 Fully equipped kitchenettes  
 Printers and copy center  
 High-speed Internet  
 IT help

**Equipment and building standards:**

LEED Platinum and WELL Gold certifications  
 24/7 security service  
 Magnetic cards access  
 Terrace on the roof of the building  
 Air conditioning  
 Sufficient daylight



Office space

Prague 7, Holešovice, Partyzánská

Ask for price

Available area	30 m²
Cellar	-
Parking	-
Reference number	102781

- Suspended ceilings
- Raised floors
- Storage areas, showers and dressing rooms
- Restaurant right in the building
- Parking in underground garages

Rental and service charges listed without VAT. Lessee pays no commission.

