



Apartment One-bedroom (2+kk)

€ 477 539 | CZK 11 800 000

57 m², Prague 4, Modřany, Na Srážku





Apartment One-bedroom (2+kk)

€ 477 539 | CZK 11 800 000

57 m², Prague 4, Modřany, Na Srážku

Total area	72 m²
Floor area*	57 m²
Terrace	15 m²
Garden	38 m²
Parking	Garage parking space
Garage	Yes
Cellar	2 m²
Reference number	102824

This designer furnished garden apartment, created by a renowned architectural studio, with wonderful views of the greenery, is located on the 1st floor of a modern apartment building with an elevator, reception, security, sauna, fitness, common garden, and underground garage. The residence is set in a quiet residential area in the old part of Modřany.

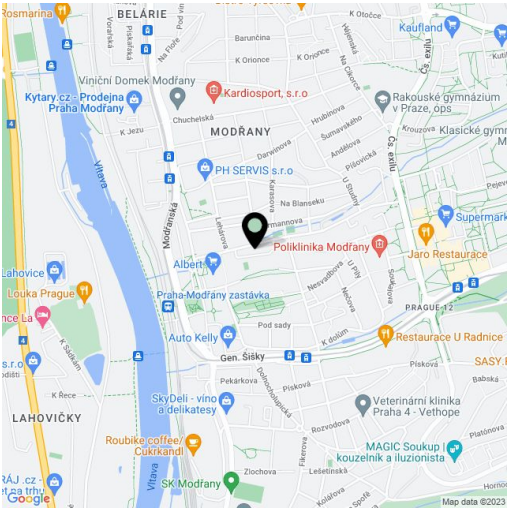
The functional layout consists of a living room with a dining area and adjoining kitchen, a bedroom with a **walk-in wardrobe** and a bathroom (shower, bidet, toilet), a utility room, and a foyer. **The terrace and garden** are accessible from the living room and bedroom.

The apartment was completely renovated in 2022. Floors are glued **wooden**, the surface of the terrace is made of thermal pine, all from the Soliter parquet brand. The doors have **concealed hinges**, the entrance door is security, and the apartment is equipped with a **Jablotron security device** connected to a **central station**. Large French windows can be shaded with **electrically controlled exterior window blinds**. The Gamadecor kitchen is equipped with **first-class Miele appliances**, including a **Bora induction hob with an integrated hood**. The sanitary ware is by the Porcelanosa, Gessi, and Catalano brands. Light fixtures are by the world-renowned **Delta Light, Brokis, Marset, Moooi, or Vibia** brands. Heating is provided by Swiss designer **Zehnder** radiators, the building has a central gas boiler, and there are **heated tiles** in the bathroom. The garden, designed and planted by a landscape architect, has a new **grassy lawn**. The apartment includes a **cellar and an extra-wide garage space**, both conveniently accessible by **elevator**. The energy efficiency of the building is **class B - very economical**.

The convenient location allows you to be near everything you need in no time. A bus stops almost by the building, and a tram stop and train station are less than a 5-minute walk away. Obchodní Square with a cinema, a large playground, and a shop is also close-by, and Sofijské Square with cafes, restaurants, shops, and a health clinic is within walking distance. There are tennis courts near the residence, a **fitness trail** along the Vltava River, and the **Hodkovičky Golf & Country Club** are nearby, and you can reach the **Modřanské rokle forest park** in a few minutes on foot or by bike.

Floor area 57 m², terrace 14.7 m², garden 37.7 m², cellar 1.7 m².

The apartment will be available from April 2024.



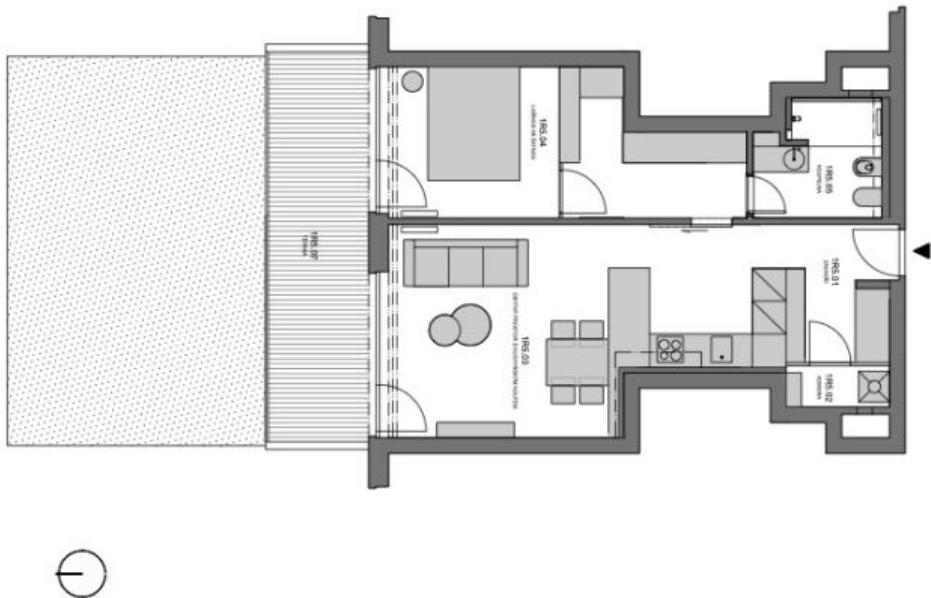
* Size of the unit according to the Housing Act.
The area consists of the sum total of the internal area of every room.



Apartment One-bedroom (2+kk)

57 m², Prague 4, Modřany, Na Srážku

€ 477 539 | CZK 11 800 000



REZIDENCE BILALIE MODŘANY - OBJEKT B			
118P - BYT 118			
TABULKA VLASTNOSTÍ			
Č. M.	NÁSTAVOST	PLOCHA	
118.01	ZÁVĚSÍ	5.6m²	
118.02	KUCHYŇKA	1.7 m²	
118.03	OBÝVACÍ POKOJ S KUCHYŇSKÝM KOUTEM	27.5 m²	
118.04	LOŽNICE SE BALKOŇOU	17.5 m²	
118.05	KOUPELNA	4.3 m²	
ÚČETNÍ PLOCHA CELKEM			
118.01	SPOLEČN.	57.8 m²	
118.01	TERASA	1.6 m²	
118.01	ZÁHRADA	37.7 m²	
PLOCHA CELKEM			111.6 m²