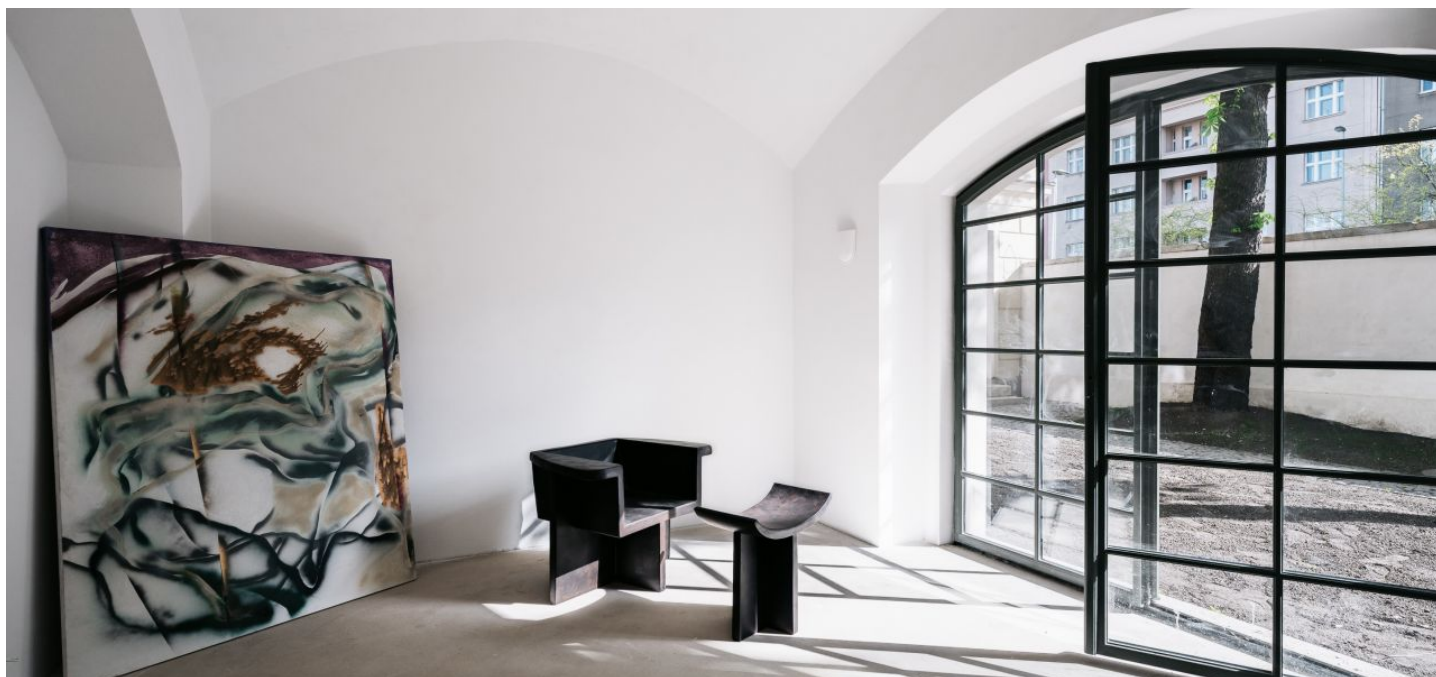




Apartment Studio (1+kk)

45.86 m², Prague 10, Vršovice, Bartoškova

€ 282 477 | CZK 6 980 000





Apartment Studio (1+kk)

€ 282 477 | CZK 6 980 000

45.86 m², Prague 10, Vršovice, Bartoškova

Total area	46 m²
Parking	-
Cellar	3 m²
Reference number	103085

This one-room apartment is currently being built in the new Vodárna Residence in a unique heritage-protected former waterworks building from 1882. The Neo-Renaissance building is located next to a community garden on the border of Nusle and Vršovice, within easy reach of a full range of services and several parks. Completion is planned for spring 2024.

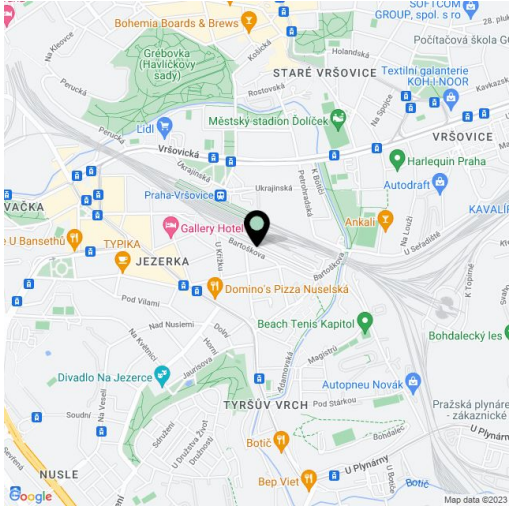
The area of the unit on the ground floor consists of a living room with a preparation for a kitchen and a storage floor, a bathroom (with a shower and toilet), and a foyer.

The high standard facilities include multi-layer **wooden floors**, **underfloor heating** with electric heating mats and the possibility to control via mobila application, Jablotron security system,, heat recovery, white matt wooden interior doors with paneled frames, **M&T Lusy** handles, Ceratherm, Duravit, Geberit, and Laufen sanitary ware, ceramic tiles, and floor tiles. **The wooden windows** are replicas of the original ones, including fittings. The entrance door will be a new single-wing fire safety entrance door with a 3-point lock and casing profiles. **A pram room** will be available to the residents, and the unit includes a cellar storage unit. If interested, it is possible to equip the interior with **custom-made** furniture for an additional fee. The entrance area of the Vodárna Residence will be decorated with cleaned **marlite**, the lower part of the **historic water reservoir** will also be visible, and the floor will be made of **original granite stones and polished concrete**. There will be a new atypical steel staircase in the western tower and the **original granite staircase** in the eastern part.

The residence is located right next to the new underpass of the Vršovice Railway Station, from where you can reach the center of the **Main Railway Station in 5 minutes**. Tram stops are just a few steps away, and transport comfort will also be increased in the future by a D line subway station. There are shops in the immediate vicinity, including a supermarket, restaurants, cafes, schools, and medical services. It is close to **a theater, cinema, and sports field**, and you can connect in no time to the currently emerging unique bike path, **the Vršovice Railway Promenade**. There is a community garden in the neighborhood, and it is possible to walk to **Havlíčkovy Sady, Jezerka or Folimanka park or Tyršův Hill** in a short time.

Floor area including storage floor 45.86 m² (according to the owner's statement 35.69 m²), cellar 2.5 m².

Photos are of other units in the project. Visualizations are for illustrative purposes only.



* Area of the unit according to the Civil Code. The area consists of the sum total area of the entire unit bounded by perimeter walls.



Apartment Studio (1+kk)

45.86 m², Prague 10, Vršovice, Bartoškova

€ 282 477 | CZK 6 980 000

V.08 1+kk

1.NP

08.01	Chodba	0,90 m²
08.02	Obytný pokoj + kk	22,85 m²
08.03	Koupelna	5,16 m²
08.04	Úložné patro	10,17 m²
Úžitná plocha bytu		39,08 m²
Vnitřní komunikace		1,20 m²
Podlahová plocha		35,69 m²
Sklep		2,50 m²

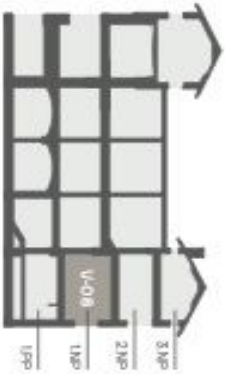
Plocha celkem

48,36 m²

UPOZORNĚNÍ:

Prostorná plocha vhodná dla obývacího pokoje a ložnice. Všechny místnosti jsou vybaveny kvalitním nábytkem a vybavením. Součástí garážové plochy je i vlastní vchod, který lze využít jako vchod do bytu. Všechny místnosti jsou vybaveny kvalitním nábytkem a vybavením. Součástí garážové plochy je i vlastní vchod, který lze využít jako vchod do bytu. Všechny místnosti jsou vybaveny kvalitním nábytkem a vybavením. Součástí garážové plochy je i vlastní vchod, který lze využít jako vchod do bytu.

Poloha bytu v rámci domu



Umístění bytu na pátě



PŘÍZEMÍ
BYTU



ÚLOŽNÉ
PATRO

