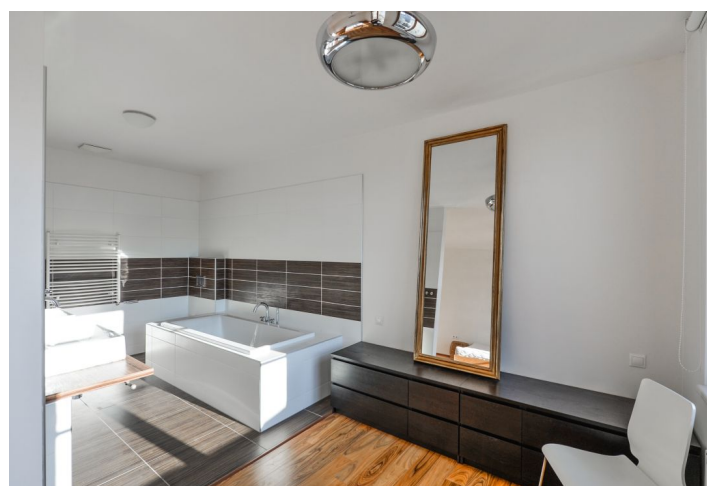
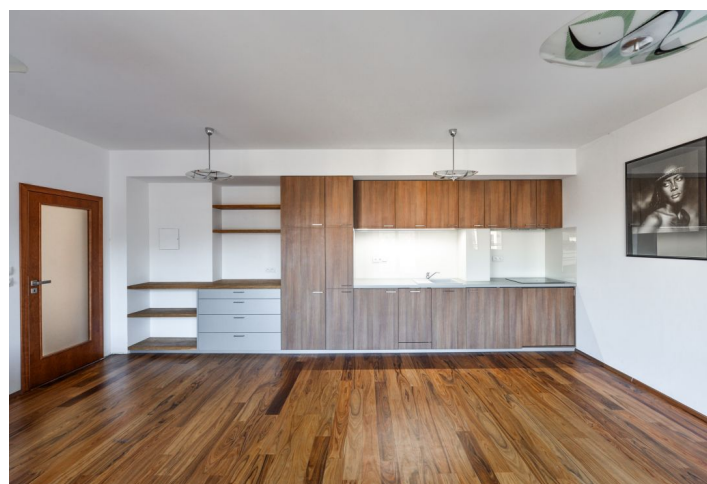
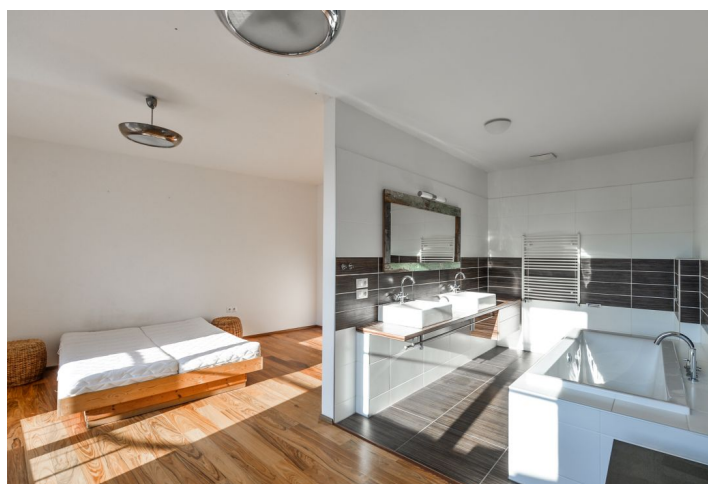




Apartment Two-bedroom (3+kk)

Rented

105 m², Prague 4, Michle, Magistrů





Apartment Two-bedroom (3+kk)

Rented

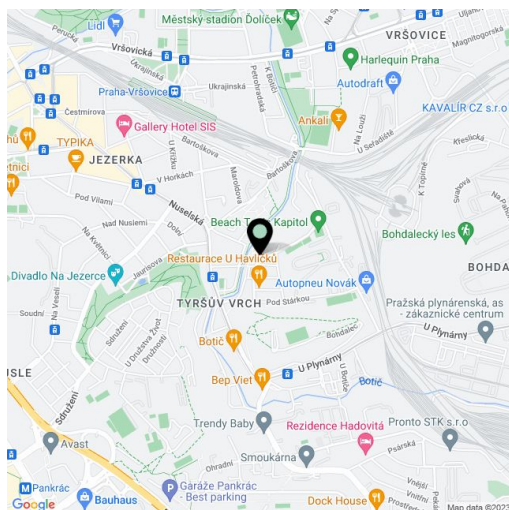
105 m², Prague 4, Michle, Magistrů

Total area	129 m ²
Floor area*	105 m ²
Balcony	4 m ²
Terrace	20 m ²
Parking	Garage space at CZK 2000 per month.
Garage	Yes
Cellar	Yes
PENB	G
Reference number	10312
Available from	Immediately

Partly furnished 2-bedroom 2-bathroom flat with a 20 m² terrace and a 4 m² balcony on the fourth floor of a completely refurbished building from 1930. Located in a quiet Michle area with the Tyršův vrch park, Botič brook and lots of greenery near by. Good amenities, school next door, quick transportation connections, 15 minutes by tram to the city center.

The interior includes a spacious living room with a fully fitted open kitchen and access to the **terrace**, master bedroom with an en-suite bathroom (bath, double sink, toilet) and **balcony** facing the courtyard, second bedroom with French windows leading to the terrace, shower bathroom with toilet, storage room, utility room, and a large entry hall.

Wooden floors and tiles, security entry door, French windows, central heating, washing machine, 6 m² **basement storage unit**, lift. One **parking** space in the on-site garage available at CZK 2000 per month. Common building charges, water and heating approx. CZK 3,000 per month. Electricity will be transferred to the tenant.



* Area of the unit according to the Civil Code. The area consists of the sum total area of the entire unit bounded by perimeter walls.