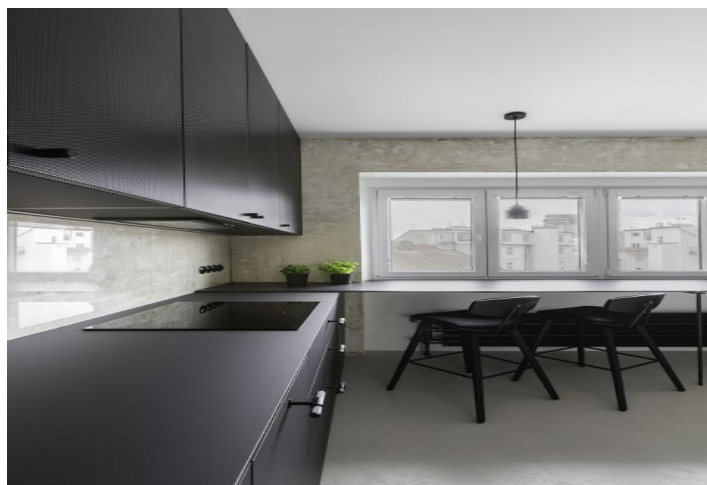
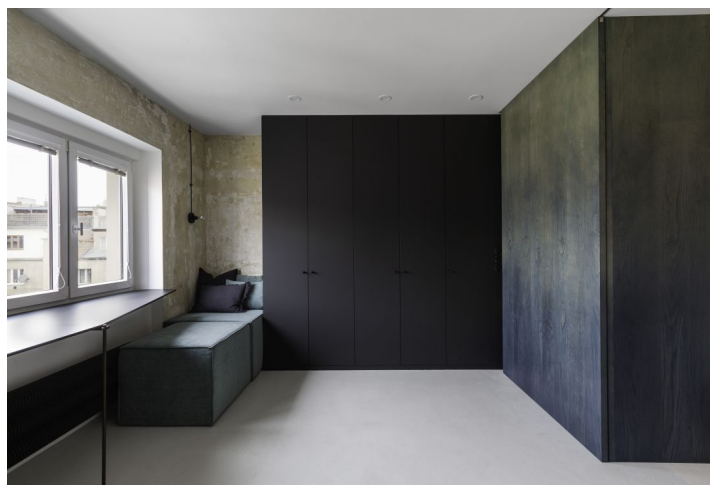
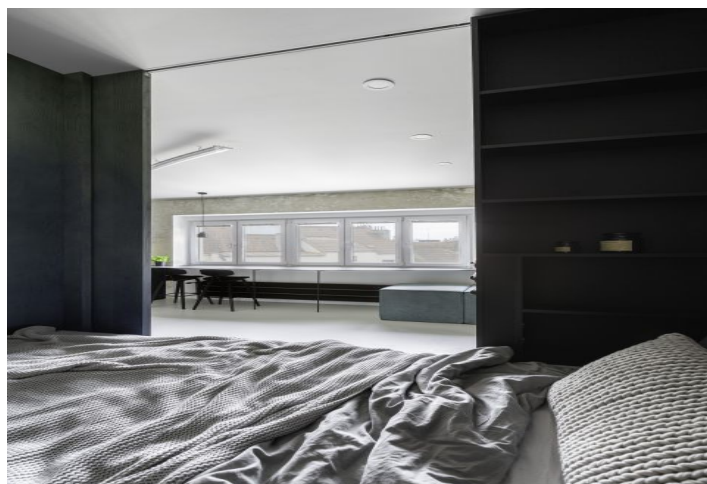




Apartment Studio (1+kk)

28 m², Prague 7, Holešovice, Jankovcova

Sold





Apartment Studio (1+kk)

Sold

28 m², Prague 7, Holešovice, Jankovcova

Total area	28 m²
Parking	-
Cellar	-
PENB	G
Reference number	103131

This fully furnished designer one-room apartment with views of a quiet courtyard is located on the top (5th) floor of a classic brick apartment building with an elevator.

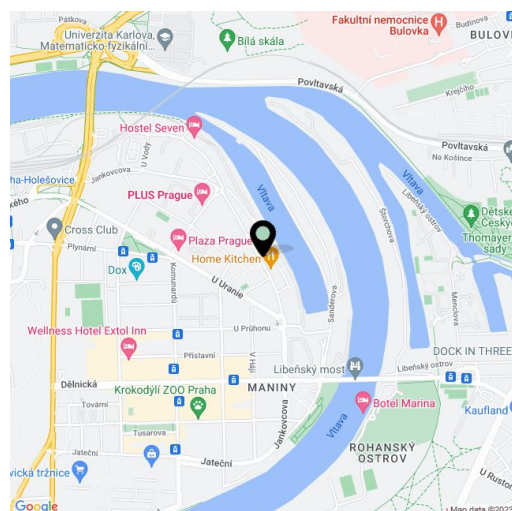
Conveniently located on a side street in Prague 7 - Holešovice with complete civic amenities.

The layout consists of a living room with an ingeniously separated sleeping area, a bathroom (with a shower, toilet, and sink), and an entrance hall.

The apartment was **completely renovated** and fitted out by a tailor-made designer in 2022. The floor is **concrete** from the **Luxusní povrchy Němec company**, windows are plastic with double glazing, and there is a new **security** entrance door. The kitchen is equipped with **Bosch** appliances (oven, refrigerator, dishwasher, induction hob, hood), and there is also a preparation for a washing machine in the kitchen area. All of the furniture is built-in and made-to-measure, which ensures a sufficient **amount of storage space** in the interior. Heating is provided by a central gas boiler. The building has an **elevator** from 2012 (it is necessary to walk up 1 floor to the apartment).

There are many restaurants, cafes, and bistros in the immediate vicinity, and the **La Fabrika theater**, **Jatka78**, the **Vnitroblok** multifunctional space, the **Mecca** club, or the **DOX** Contemporary Art Center are close-by. There are tram stops a few steps away from the building, and the Palmovka, Nádraží Holešovice, and Vltavská metro stations are nearby.

Floor area 28.2 m².



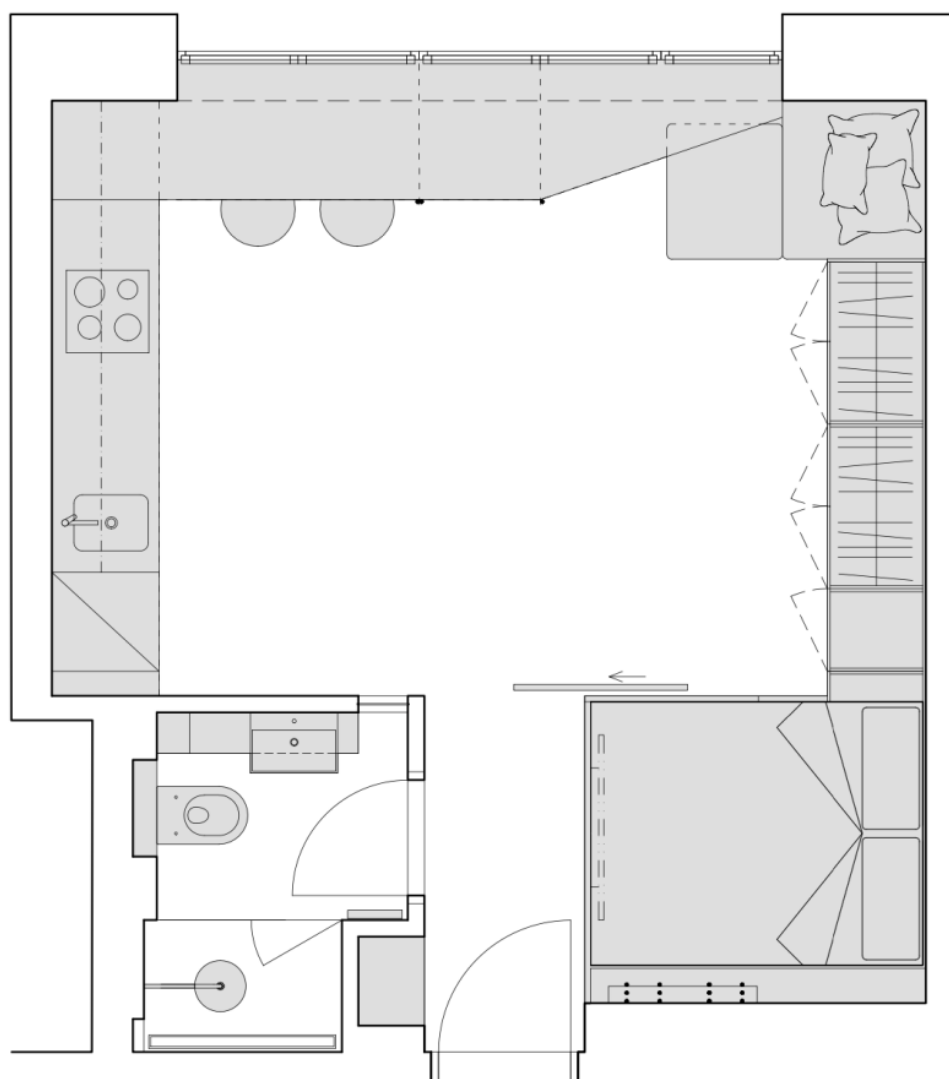
* Size of the unit according to the Housing Act.
The area consists of the sum total of the internal area of every room.



Apartment Studio (1+kk)

28 m², Prague 7, Holešovice, Jankovcova

Sold



PŮDORYS

