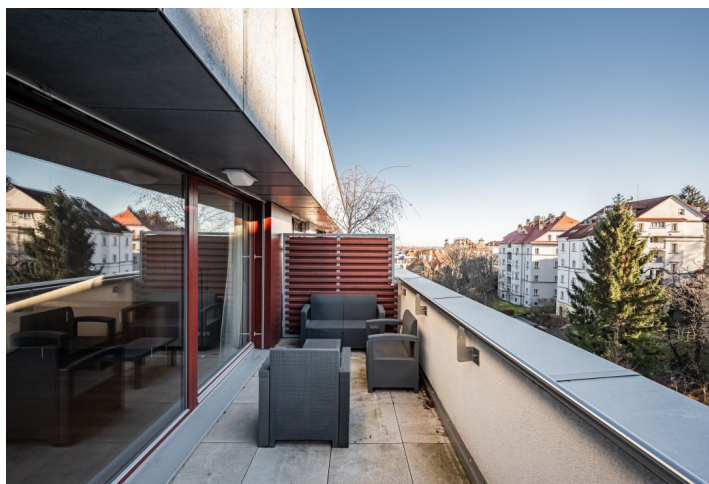




## Apartment One-bedroom (2+kk)

€ 598 948 | CZK 14 800 000

58.7 m², Prague 5, Smíchov, U Nikolajky





## Apartment One-bedroom (2+kk)

€ 598 948 | CZK 14 800 000

58.7 m², Prague 5, Smíchov, U Nikolajky

Total area	104 m²
Floor area*	59 m²
Terrace	45 m²
Parking	1 garage parking space
Garage	Yes
Cellar	3 m²
Service price	5 832 CZK monthly
Reference number	103529

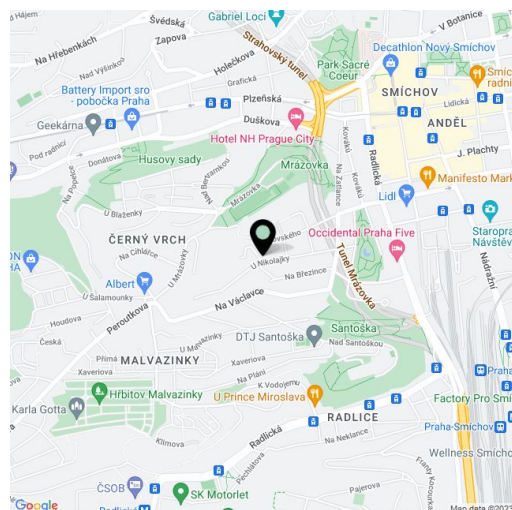
This modern apartment with an almost fifty-meter terrace and a garage parking space is located in a residence set in a quiet green area of Prague 5 near the Malvazinky residential area, not far from the Anděl pedestrian zone and the new Smíchov City district.

The layout of the apartment on the 4th highest floor consists of a living room, adjoining kitchen, 1 bedroom, an airy bathroom (with a bathtub and toilet), and an entrance hall. Both rooms lead to a **spacious terrace with green views**.

The residence was completed in 2018. The **high standard facilities** include **wooden Euro windows, wooden floors, veneered interior doors, built-in cooling, heated tiles** in the bathroom, and Laufen sanitary ware. The ceiling height in the apartment is 2.7 m, heating is provided by the building's central boiler. The apartment comes with a **garage parking space and a cellar storage unit**, both accessible by **elevator**. Since there are only two apartments per floor, residents can enjoy a **high level of privacy**, while security is provided by the **chip-accessed entrance**. The facade features **travertine and granite stone cladding**, and the house is surrounded by **landscaped greenery**.

Advantages include an **excellent location** at the end of a cul-de-sac right on a **wooded hillside**, while also being within easy reach of all services. The location is very pleasant thanks to **several parks**: Santoška, Bertramka, and the Na Skalce Gardens, and Sacré Coeur Park is not far away. The neighborhood is full of shops, restaurants, and cafes, with the Nový Smíchov shopping and entertainment center within walking distance. Excellent transport connections are provided by the Anděl metro station, tram lines, and nearby bus and train stations.

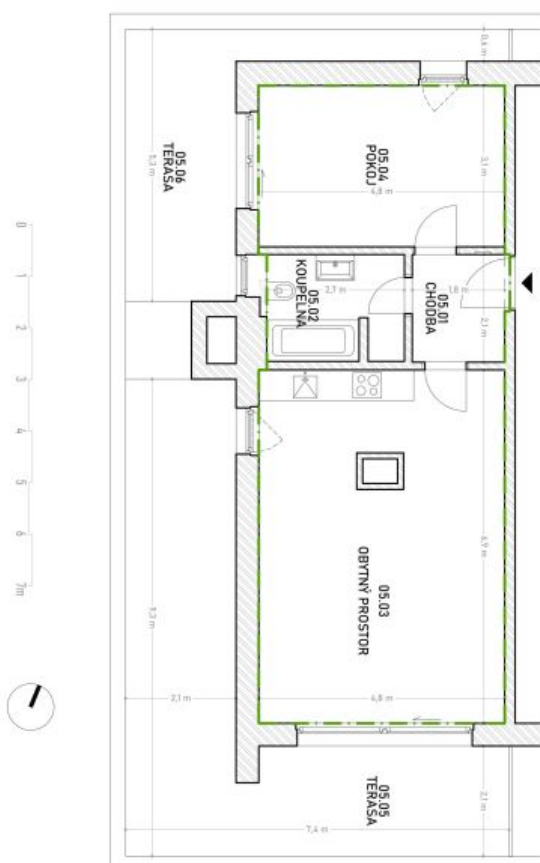
Floor area 58,7 m², terrace 45,4 m², cellar 3.1 m².



\* Area of the unit according to the Civil Code. The area consists of the sum total area of the entire unit bounded by perimeter walls.

**€ 598 948 | CZK 14 800 000**

58.7 m<sup>2</sup>, Prague 5, Smíchov, U Nikolajky



HYPER MESTRISI		
PROVA	PROVA ESISTENZIALE	PROVA ESISTENZIALE
ES.01	ES.01	ES.01
ES.02	ES.02	ES.02
ES.03	ES.03	ES.03
ES.04	ES.04	ES.04
ES.05	ES.05	ES.05
ES.06	ES.06	ES.06
ES.07	ES.07	ES.07
ES.08	ES.08	ES.08
ES.09	ES.09	ES.09
ES.10	ES.10	ES.10
ES.11	ES.11	ES.11
ES.12	ES.12	ES.12
ES.13	ES.13	ES.13
ES.14	ES.14	ES.14
ES.15	ES.15	ES.15
ES.16	ES.16	ES.16
ES.17	ES.17	ES.17
ES.18	ES.18	ES.18
ES.19	ES.19	ES.19
ES.20	ES.20	ES.20
ES.21	ES.21	ES.21
ES.22	ES.22	ES.22
ES.23	ES.23	ES.23
ES.24	ES.24	ES.24
ES.25	ES.25	ES.25
ES.26	ES.26	ES.26
ES.27	ES.27	ES.27
ES.28	ES.28	ES.28
ES.29	ES.29	ES.29
ES.30	ES.30	ES.30
ES.31	ES.31	ES.31
ES.32	ES.32	ES.32
ES.33	ES.33	ES.33
ES.34	ES.34	ES.34
ES.35	ES.35	ES.35
ES.36	ES.36	ES.36
ES.37	ES.37	ES.37
ES.38	ES.38	ES.38
ES.39	ES.39	ES.39
ES.40	ES.40	ES.40
ES.41	ES.41	ES.41
ES.42	ES.42	ES.42
ES.43	ES.43	ES.43
ES.44	ES.44	ES.44
ES.45	ES.45	ES.45
ES.46	ES.46	ES.46
ES.47	ES.47	ES.47
ES.48	ES.48	ES.48
ES.49	ES.49	ES.49
ES.50	ES.50	ES.50
ES.51	ES.51	ES.51
ES.52	ES.52	ES.52
ES.53	ES.53	ES.53
ES.54	ES.54	ES.54
ES.55	ES.55	ES.55
ES.56	ES.56	ES.56
ES.57	ES.57	ES.57
ES.58	ES.58	ES.58
ES.59	ES.59	ES.59
ES.60	ES.60	ES.60
ES.61	ES.61	ES.61
ES.62	ES.62	ES.62
ES.63	ES.63	ES.63
ES.64	ES.64	ES.64
ES.65	ES.65	ES.65
ES.66	ES.66	ES.66
ES.67	ES.67	ES.67
ES.68	ES.68	ES.68
ES.69	ES.69	ES.69
ES.70	ES.70	ES.70
ES.71	ES.71	ES.71
ES.72	ES.72	ES.72
ES.73	ES.73	ES.73
ES.74	ES.74	ES.74
ES.75	ES.75	ES.75
ES.76	ES.76	ES.76
ES.77	ES.77	ES.77
ES.78	ES.78	ES.78
ES.79	ES.79	ES.79
ES.80	ES.80	ES.80
ES.81	ES.81	ES.81
ES.82	ES.82	ES.82
ES.83	ES.83	ES.83
ES.84	ES.84	ES.84
ES.85	ES.85	ES.85
ES.86	ES.86	ES.86
ES.87	ES.87	ES.87
ES.88	ES.88	ES.88
ES.89	ES.89	ES.89
ES.90	ES.90	ES.90
ES.91	ES.91	ES.91
ES.92	ES.92	ES.92
ES.93	ES.93	ES.93
ES.94	ES.94	ES.94
ES.95	ES.95	ES.95
ES.96	ES.96	ES.96
ES.97	ES.97	ES.97
ES.98	ES.98	ES.98
ES.99	ES.99	ES.99
ES.100	ES.100	ES.100

HEAVY POLYMER FILM 8.1, 10.1, 12.1, 14.1, 16.1, 18.1, 20.1, 22.1, 24.1, 26.1, 28.1, 30.1, 32.1, 34.1, 36.1, 38.1, 40.1, 42.1, 44.1, 46.1, 48.1, 50.1, 52.1, 54.1, 56.1, 58.1, 60.1, 62.1, 64.1, 66.1, 68.1, 70.1, 72.1, 74.1, 76.1, 78.1, 80.1, 82.1, 84.1, 86.1, 88.1, 90.1, 92.1, 94.1, 96.1, 98.1, 100.1, 102.1, 104.1, 106.1, 108.1, 110.1, 112.1, 114.1, 116.1, 118.1, 120.1, 122.1, 124.1, 126.1, 128.1, 130.1, 132.1, 134.1, 136.1, 138.1, 140.1, 142.1, 144.1, 146.1, 148.1, 150.1, 152.1, 154.1, 156.1, 158.1, 160.1, 162.1, 164.1, 166.1, 168.1, 170.1, 172.1, 174.1, 176.1, 178.1, 180.1, 182.1, 184.1, 186.1, 188.1, 190.1, 192.1, 194.1, 196.1, 198.1, 200.1, 202.1, 204.1, 206.1, 208.1, 210.1, 212.1, 214.1, 216.1, 218.1, 220.1, 222.1, 224.1, 226.1, 228.1, 230.1, 232.1, 234.1, 236.1, 238.1, 240.1, 242.1, 244.1, 246.1, 248.1, 250.1, 252.1, 254.1, 256.1, 258.1, 260.1, 262.1, 264.1, 266.1, 268.1, 270.1, 272.1, 274.1, 276.1, 278.1, 280.1, 282.1, 284.1, 286.1, 288.1, 290.1, 292.1, 294.1, 296.1, 298.1, 300.1, 302.1, 304.1, 306.1, 308.1, 310.1, 312.1, 314.1, 316.1, 318.1, 320.1, 322.1, 324.1, 326.1, 328.1, 330.1, 332.1, 334.1, 336.1, 338.1, 340.1, 342.1, 344.1, 346.1, 348.1, 350.1, 352.1, 354.1, 356.1, 358.1, 360.1, 362.1, 364.1, 366.1, 368.1, 370.1, 372.1, 374.1, 376.1, 378.1, 380.1, 382.1, 384.1, 386.1, 388.1, 390.1, 392.1, 394.1, 396.1, 398.1, 400.1, 402.1, 404.1, 406.1, 408.1, 410.1, 412.1, 414.1, 416.1, 418.1, 420.1, 422.1, 424.1, 426.1, 428.1, 430.1, 432.1, 434.1, 436.1, 438.1, 440.1, 442.1, 444.1, 446.1, 448.1, 450.1, 452.1, 454.1, 456.1, 458.1, 460.1, 462.1, 464.1, 466.1, 468.1, 470.1, 472.1, 474.1, 476.1, 478.1, 480.1, 482.1, 484.1, 486.1, 488.1, 490.1, 492.1, 494.1, 496.1, 498.1, 500.1, 502.1, 504.1, 506.1, 508.1, 510.1, 512.1, 514.1, 516.1, 518.1, 520.1, 522.1, 524.1, 526.1, 528.1, 530.1, 532.1, 534.1, 536.1, 538.1, 540.1, 542.1, 544.1, 546.1, 548.1, 550.1, 552.1, 554.1, 556.1, 558.1, 560.1, 562.1, 564.1, 566.1, 568.1, 570.1, 572.1, 574.1, 576.1, 578.1, 580.1, 582.1, 584.1, 586.1, 588.1, 590.1, 592.1, 594.1, 596.1, 598.1, 600.1, 602.1, 604.1, 606.1, 608.1, 610.1, 612.1, 614.1, 616.1, 618.1, 620.1, 622.1, 624.1, 626.1, 628.1, 630.1, 632.1, 634.1, 636.1, 638.1, 640.1, 642.1, 644.1, 646.1, 648.1, 650.1, 652.1, 654.1, 656.1, 658.1, 660.1, 662.1, 664.1, 666.1, 668.1, 670.1, 672.1, 674.1, 676.1, 678.1, 680.1, 682.1, 684.1, 686.1, 688.1, 690.1, 692.1, 694.1, 696.1, 698.1, 700.1, 702.1, 704.1, 706.1, 708.1, 710.1, 712.1, 714.1, 716.1, 718.1, 720.1, 722.1, 724.1, 726.1, 728.1, 730.1, 732.1, 734.1, 736.1, 738.1, 740.1, 742.1, 744.1, 746.1, 748.1, 750.1, 752.1, 754.1, 756.1, 758.1, 760.1, 762.1, 764.1, 766.1, 768.1, 770.1, 772.1, 774.1, 776.1, 778.1, 780.1, 782.1, 784.1, 786.1, 788.1, 790.1, 792.1, 794.1, 796.1, 798.1, 800.1, 802.1, 804.1, 806.1, 808.1, 810.1, 812.1, 814.1, 816.1, 818.1, 820.1, 822.1, 824.1, 826.1, 828.1, 830.1, 832.1, 834.1, 836.1, 838.1, 840.1, 842.1, 844.1, 846.1, 848.1, 850.1, 852.1, 854.1, 856.1, 858.1, 860.1, 862.1, 864.1, 866.1, 868.1, 870.1, 872.1, 874.1, 876.1, 878.1, 880.1, 882.1, 884.1, 886.1, 888.1, 890.1, 892.1, 894.1, 896.1, 898.1, 900.1, 902.1, 904.1, 906.1, 908.1, 910.1, 912.1, 914.1, 916.1, 918.1, 920.1, 922.1, 924.1, 926.1, 928.1, 930.1, 932.1, 934.1, 936.1, 938.1, 940.1, 942.1, 944.1, 946.1, 948.1, 950.1, 952.1, 954.1, 956.1, 958.1, 960.1, 962.1, 964.1, 966.1, 968.1, 970.1, 972.1, 974.1, 976.1, 978.1, 980.1, 982.1, 984.1, 986.1, 988.1, 990.1, 992.1, 994.1, 996.1, 998.1, 1000.1, 1002.1, 1004.1, 1006.1, 1008.1, 1010.1, 1012.1, 1014.1, 1016.1, 1018.1, 1020.1, 1022.1, 1024.1, 1026.1, 1028.1, 1030.1, 1032.1, 1034.1, 1036.1, 1038.1, 1040.1, 1042.1, 1044.1, 1046.1, 1048.1, 1050.1, 1052.1, 1054.1, 1056.1, 1058.1, 1060.1, 1062.1, 1064.1, 1066.1, 1068.1, 1070.1, 1072.1, 1074.1, 1076.1, 1078.1, 1080.1, 1082.1, 1084.1, 1086.1, 1088.1, 1090.1, 1092.1, 1094.1, 1096.1, 1098.1, 1100.1, 1102.1, 1104.1, 1106.1, 1108.1, 1110.1, 1112.1, 1114.1, 1116.1, 1118.1, 1120.1, 1122.1, 1124.1, 1126.1, 1128.1, 1130.1, 1132.1, 1134.1, 1136.1, 1138.1, 1140.1, 1142.1, 1144.1, 1146.1, 1148.1, 1150.1, 1152.1, 1154.1, 1156.1, 1158.1, 1160.1, 1162.1, 1164