



Apartment Two-bedroom (3+kk)

€ 554 431 | CZK 13 700 000

89.53 m², Prague 6, Břevnov, Závěrka





Apartment Two-bedroom (3+kk)

€ 554 431 | CZK 13 700 000

89.53 m², Prague 6, Břevnov, Závěrka

Total area	90 m²
Parking	-
Cellar	-
Service price	2 772 CZK monthly
PENB	G
Reference number	103906

This completely renovated, sunny apartment is located on the 2nd floor of a well-maintained historic apartment building with a common garden in a nice part of Prague 6 - Břevnov, near Ladronka Park and Bělohorská Street, surrounded by cafes, restaurants, and shops.

The layout consists of a living room with an adjoining kitchen and pantry, 2 bedrooms, a bathroom (with a shower and toilet), a separate toilet, and an entrance hall.

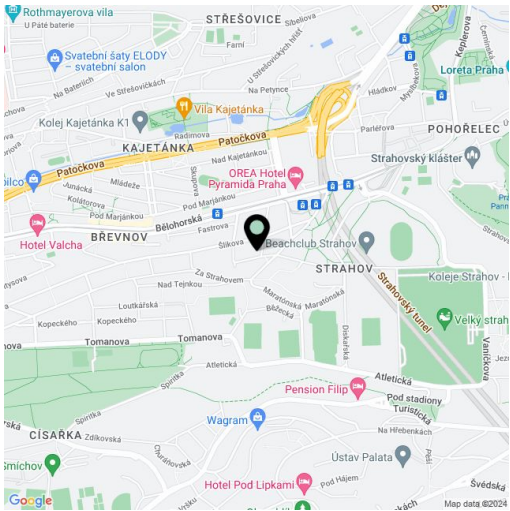
The apartment has been renovated and has new Euro windows and laminate floors. There are built-in wardrobes in one bedroom and the entrance hall; the kitchen is equipped with built-in appliances including a dishwasher and an induction hob. Heating is provided by a gas boiler. The building is nicely maintained, partially renovated, and has a new elevator. A nicely landscaped garden is available to residents.

The historic apartment building is located in the heritage-protected Tejnka zone, just a 10-minute walk from Prague Castle. All amenities are within easy reach, and public and private schools, including the J. Kepler High School, are within walking distance. An excellent connection to the city center is provided by trams from a nearby stop, and the airport is also easily accessible. You can quickly connect to a tunnel complex by car.

The apartment is rented until the end of April 2024.

Floor area 89.53 m².

* Area of the unit according to the Civil Code. The area consists of the sum total area of the entire unit bounded by perimeter walls.

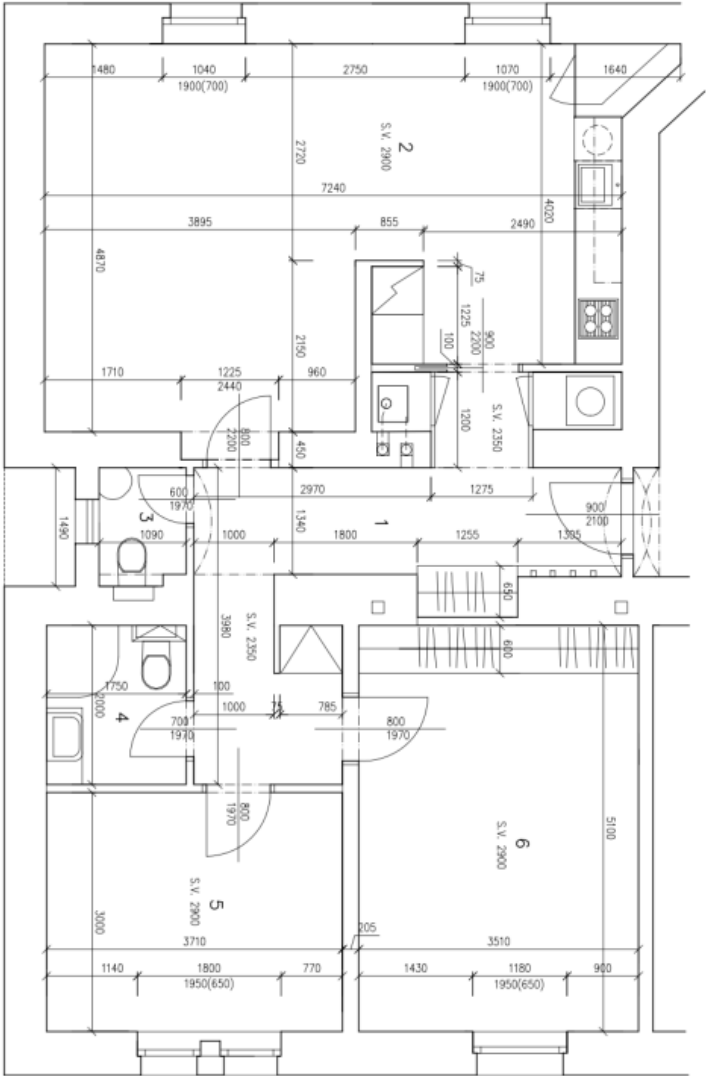




Apartment Two-bedroom (3+kk)

€ 554 431 | CZK 13 700 000

89.53 m², Prague 6, Břevnov, Závěrka



LEGENDA MÍSTNOSTI (PLOCHY BEZ ZD)

Č.M.	MÍSTNOST	UŽIT.P.L. m²
1	PŘEDSÍŇ	15,11
2	OBYTNÁ KUCHYŇ	32,54
3	WC	1,58
4	KOUPELNA	3,50
5	POKoj	11,13
6	LOŽNICE	17,90
CELKEM		81,76

UŽITNÁ PLOCHA BYTU 81,76m²
PODLAHOVÁ PLOCHA BYTU 89,53m²

BYT Č.6 – 3.NP
ZÁVĚRKA 399/7, PRAHA 6-BŘEVNOV
M 1:50
A3