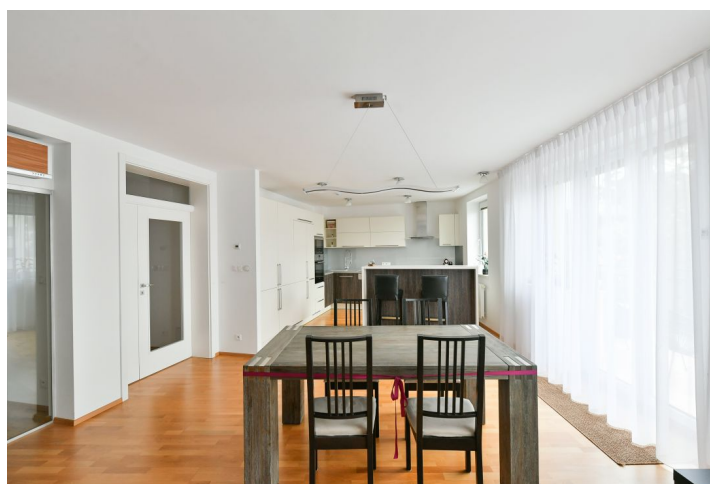




Apartment Three-bedroom (4+kk)

€ 2 206 | CZK 55 000

138 m², Prague 4, Podolí, Na Klaudiánce





Apartment Three-bedroom (4+kk)

€ 2 206 | CZK 55 000

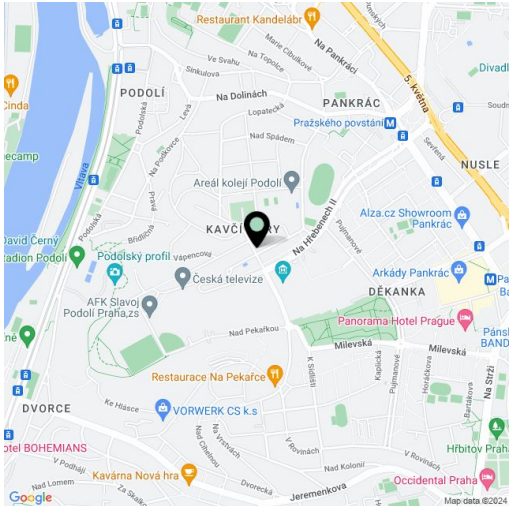
138 m², Prague 4, Podolí, Na Klaudiánce

| | |
|------------------|--|
| Total area | 152 m² |
| Floor area* | 138 m² |
| Terrace | 14 m² |
| Parking | Garage and outdoor parking. |
| Garage | Yes |
| Cellar | Yes |
| Service price | Monthly deposit for services, water, and heating: CZK 7,000. Electricity is billed separately. |
| Reference number | 103949 |
| Available from | 15.05.2024 |

This sunny fully furnished 3-bedroom apartment with a south-facing terrace is situated on the 1st floor of a renovated residential building with parking and an elevator. Set on a quiet cul-de-sac in Podolí, Prague 4, in a residential neighborhood near the Czech TV grounds, with two parks close vicinity, within walking distance of the Pražského povstání metro station (line C). Conveniently located for full amenities and services, the Pankrác business center, and the Prague 4 international schools. Located within easy reach of the Podolí swimming pool, sports grounds (tennis, football and basketball courts and parkour playground), and Kublov outdoor fitness park.

The bright interior features a south-facing living room with a fully fitted open plan kitchen, dining area, and access to the **terrace**, a master bedroom, a second bedroom, a study/bedroom with full sound insulation, a bathroom (bathtub, walk-in shower, toilet), a storage room, a guest toilet, and a large entrance hall with built-in wardrobes.

Air-conditioning in the living room, custom made furniture, **hardwood floors** , central heating, tiles, underfloor heating in the bathroom, terrace awning operated by a remote control, washer, dryer, Siemens kitchen appliances, dishwasher, induction cooktop, microwave oven, TV, **cellar**. A **garage parking space** and a **parking space** in front of the garage are included. The apartment can be unfurnished.



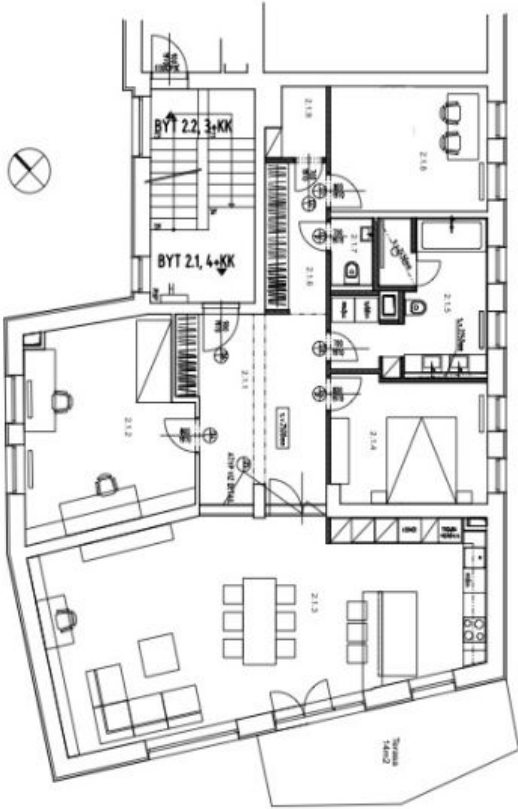
* Size of the unit according to the Housing Act.
The area consists of the sum total of the internal area of every room.



Apartment Three-bedroom (4+kk)

€ 2 206 | CZK 55 000

138 m², Prague 4, Podolí, Na Klaudiánce



| LEGENDA BYT 2.1 | | | | |
|-----------------|------------------------------------|-----------------|------------------|-----------------|
| Č.M. | MÍSTNOST | PODL. PLOCHA | POVRCHY | POZNÁMKA |
| 2.1.1 | VSTUPNÍ HALA | 16,39m² | DŘEVĚNÉ PARKETY | OMITKA VÁP ŠTUK |
| 2.1.2 | DĚTSKÝ POKOJ | 20,41 m² | DŘEVĚNÉ PARKETY | OMITKA VÁP ŠTUK |
| 2.1.3 | OBYTNÝ PROSTOR + (KUCHYŇ, JÍDELNA) | 52,24 m² | DŘEVĚNÉ PARKETY | OMITKA VÁP ŠTUK |
| 2.1.4 | LOŽNICE RODIČŮ | 12,20 m² | DŘEVĚNÉ PARKETY | OMITKA VÁP ŠTUK |
| 2.1.5 | KOUPELNA | 12,98 m² | KERAMICKÁ DLAŽBA | KERAMICKÝ OBKL. |
| 2.1.6 | CHODBA / SÁTKA | 6,63 m² | DŘEVĚNÉ PARKETY | OMITKA VÁP ŠTUK |
| 2.1.7 | WC | 2,04 m² | KERAMICKÁ DLAŽBA | KERAMICKÝ OBKL. |
| 2.1.8 | PRACOVNA | 12,24 m² | DŘEVĚNÉ PARKETY | OMITKA VÁP ŠTUK |
| 2.1.9 | KOMORA | 2,39 m² | DŘEVĚNÉ PARKETY | OMITKA VÁP ŠTUK |
| CELKEM m² | | 137,66 m² | | |
| (TERASA SKLEP | | 14,00m² 2,87m²) | | |