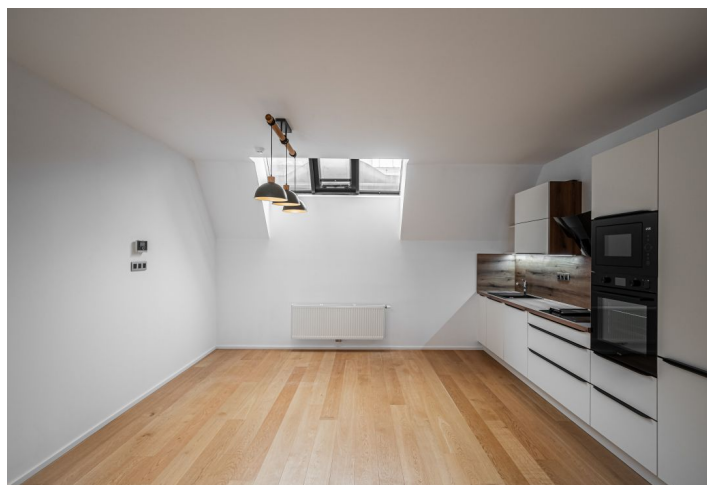
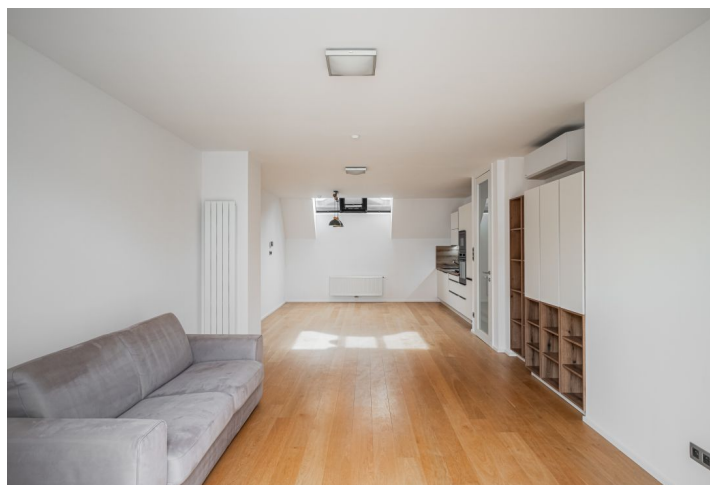




## Apartment Two-bedroom (3+kk)

€ 1 980 | CZK 49 500

94 m², Prague 1, Nové Město, Řeznická





# Apartment Two-bedroom (3+kk)

€ 1 980 | CZK 49 500

94 m², Prague 1, Nové Město, Řeznická

Total area	99 m²
Floor area*	94 m²
Balcony	5 m²
Parking	Garage.
Garage	Yes
Cellar	Yes

Service price	Monthly deposit for services and water: CZK 1,000 for one person, CZK 800 for any other person. Electricity and gas are billed separately.
---------------	--

PENB	G
------	---

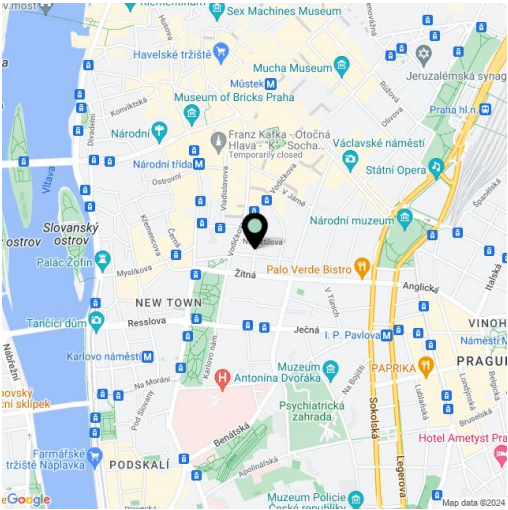
Reference number	104286
------------------	--------

Available from	Immediately
----------------	-------------

This completely refurbished unfurnished apartment with a terrace is on the 4th topmost floor of a renovated residential corner building with an elevator. Centrally located on a quiet street in close vicinity of the New Town Hall and Charles Square with tram and metro connections, and within walking distance of Wenceslas Square. Full amenities and services are available within easy reach.

The interior features a living room with a fully fitted open plan kitchen, dining area, and access to the **terrace** overlooking a quiet courtyard, 2 bedrooms with built-in wardrobes, a bathroom including a bathtub and a walk-in shower, a separate toilet, a utility room, and an entrance hall with built-in wardrobes.

**Air-conditioning, hardwood floors,** tiles, security entry door, designer interior doors, ample built-in storage, automatic skylights, blinds, curtains, gas boiler, underfloor heating in the bathroom, dishwasher, induction cooktop with a grill, microwave oven, alarm, **cellar**. A single on-site **garage** is available.



\* Size of the unit according to the Housing Act.  
The area consists of the sum total of the internal area of every room.