



Apartment One-bedroom (2+kk)

€ 279 183 | CZK 6 900 000

37.4 m², Prague 4, Nusle, Boleslavova





Apartment One-bedroom (2+kk)

€ 279 183 | CZK 6 900 000

37.4 m², Prague 4, Nusle, Boleslavova

Total area	37 m²
Parking	-
Cellar	-
Reference number	104690

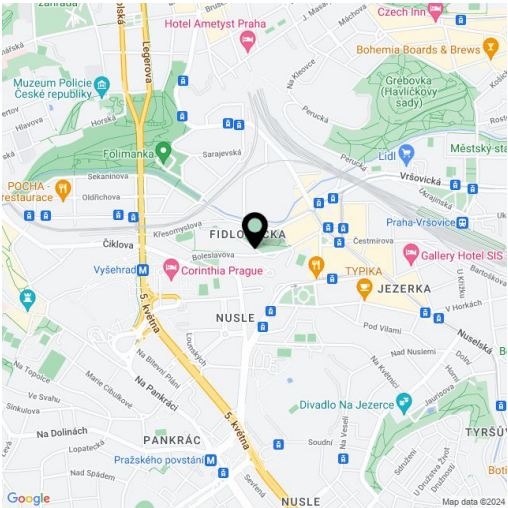
This amazingly bright apartment is located on the 1st floor of a boutique residential project with 15 unique units and creatively designed common areas. Originally a tenement apartment building from the 1930s, it is nestled in a green part of Prague 4 - Nusle, not far from the city center, which is excellently accessible by public transport and along a bike on a safe bike path. Expected completion by the end of 2024.

The area of the apartment consists of a living room with a preparation for a kitchen, a bedroom, a bathroom (**walk-in shower**), separate toilet, and a foyer with space for a built-in wardrobe. Both rooms have **south-facing** windows overlooking a **quiet garden** with **mature greenery**.

The units in the project are divided into **six collections**. This particular apartment is part of the **Josephine collection**. Facilities include **high-quality LVT floors** in a wooden decor and properties, large-format wall and floor tiles combined with **mosaic tiles in neutral earth tones**, **Laufen and Kartell by Laufen** sanitary ware, **Grohe Essence** chrome faucets including concealed ones, a designer P.M.H. Rosendahl heated towel rail, **custom-made** entry doors and **Sapeli** interior sliding doors.

This **very pleasant neighborhood** is nestled between the **Na Fidlovačce** and **Křesomyslův Hájíček** parks, and **Folimanka Park** with sports fields and the large green areas of **historic Vyšehrad** are nearby. Several **cafés** and **sports and wellness** centers are located on the **26th floor** of the Corinthia Hotel, only a short distance from the residence, and the range of services in the area will be further expanded by the future **Nuselský Pivovar residential project**. There is a tram stop just a few steps away, and the Vyšehrad metro station (line C) and Náměstí Bratří Synků Square (where a line D metro station will be built) are within easy walking distance.

Floor area 37.4 m².
Possibility to purchase a storage space at extra cost.



* Area of the unit according to the Civil Code. The area consists of the sum total area of the entire unit bounded by perimeter walls.



Apartment One-bedroom (2+kk)

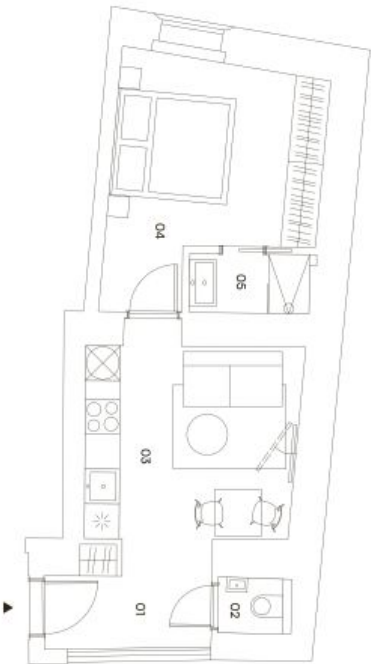
€ 279 183 | CZK 6 900 000

37.4 m², Prague 4, Nusle, Boleslavova

CastleRock
Investments



KOLEKCE ROUTINE LIVING
JOSEPHINE
JOSEPHINE JE ČETIRÉ PŘESNÝ APARTMÁN S VELKÝMI FRANCOUZSKÝMI OKNY,
KTERÉ DOVNITŘ PROPUSŤEJÍ PÁPRSKY SLUNCE PO CELÝ ROK.



BOLESLAVOVA 3

205

2+kk
2. podlaží
37,4 m²

Umístění v budově



Přehled ploch

01 předstih	3,8 m²
02 wc	1 m²
03 kuchyň + obývací pokoj	13,1 m²
04 ložnice	12,9 m²
05 koupelna	2 m²
Úžitná plocha	32,8 m²
Svislá konstrukce	4,6 m²
Podlahová plocha	37,4 m²
Celková plocha	37,4 m²

Technologie

Podlahové vytápění

Všechny informace a údaje uvedené v tomto inzerátu mají charakter pouze orientační. Za obsah a přesnost informací o tomto objektu nelze odpovědnost převést na žádné z uvedených subjektů. Pro více informací kontaktujte makléře.

exkluzivní zastoupení
svoboda&williams | CHRISTIE'S
INTERNATIONAL REAL ESTATE