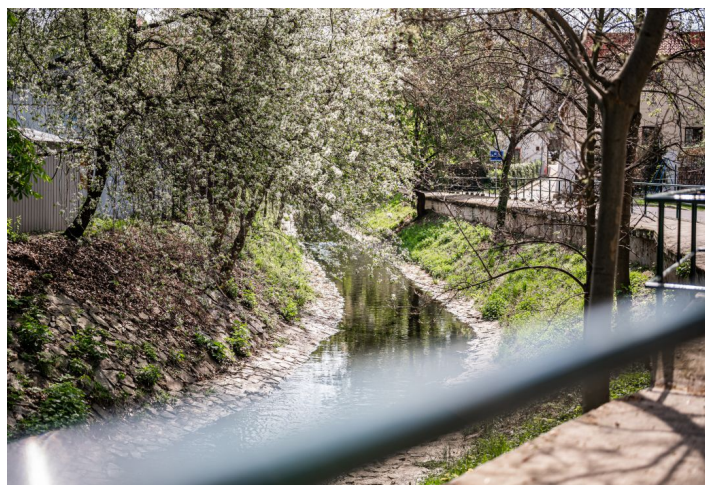




Apartment One-bedroom (2+kk)

€ 408 659 | CZK 10 100 000

45.2 m², Prague 4, Nusle, Boleslavova





Apartment One-bedroom (2+kk)

€ 408 659 | CZK 10 100 000

45.2 m², Prague 4, Nusle, Boleslavova

Total area	58 m²
Floor area*	45 m²
Balcony	13 m²
Parking	-
Cellar	-
Reference number	104695

This amazingly bright apartment with a large balcony is located on the 2nd floor of a boutique residential project with 15 unique units and creatively designed common areas. Originally a tenement apartment building from the 1930s, it is nestled in a green part of Prague 4 - Nusle, not far from the city center, which is excellently accessible by public transport and along a bike on a safe bike path. Expected completion by the end of 2024.

The area of the apartment consists of a living room with a preparation for a kitchen, a bedroom, a bathroom (walk-in shower, toilet), and a foyer with space for a built-in wardrobe. Both rooms have south-facing windows overlooking a quiet one-way street and access to an approximately 13-meter balcony facing a quiet garden with mature greenery.

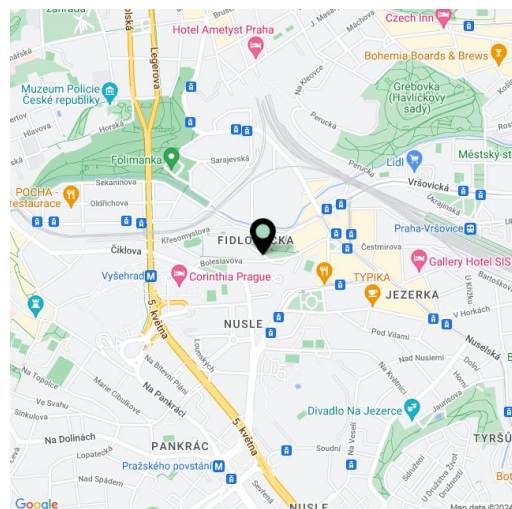
The units in the project are divided into six collections. This particular apartment is part of the **Jacqueline collection**. Facilities include high-quality LVT floors in a wooden decor and properties, large-format wall and floor tiles combined with mosaic tiles in neutral earth tones, Laufen and Kartell by Laufen sanitary ware, Grohe Essence chrome faucets including concealed ones, a designer P.M.H. Rosendahl heated towel rail, custom-made entry doors and Sapeli interior sliding doors.

This very pleasant neighborhood is nestled between the Na Fidlovačce and Křesomyslův Hájček parks, and Folimanka Park with sports fields and the large green areas of historic Vyšehrad are nearby. Several cafés and sports and wellness centers are located on the 26th floor of the Corinthia Hotel, only a short distance from the residence, and the range of services in the area will be further expanded by the future Nuselský Pivovar residential project. There is a tram stop just a few steps away, and the Vyšehrad metro station (line C) and Náměstí Bratří Synků Square (where a line D metro station will be built) are within easy walking distance.

Floor area 45.2 m², balcony 13.1 m².

Possibility to purchase a storage space at extra cost.

For more information, please visit the project website www.boleslavova3.cz.



* Area of the unit according to the Civil Code. The area consists of the sum total area of the entire unit bounded by perimeter walls.



Apartment One-bedroom (2+kk)

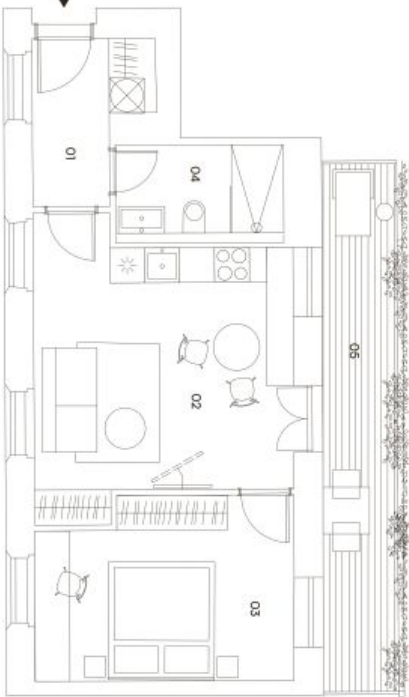
€ 408 659 | CZK 10 100 000

45.2 m², Prague 4, Nusle, Boleslavova

CastleRock
Investments



KOLEKCE BALCONY LIVING
JACQUELINE
JACQUELINE SE PŘÍŠŤÍ SVÝM PROSTOROVÝM BALCONEM, KTERÝ JE PŘÍSTUPNÝ Z OBEDU
MÍSTNOSTI A ODKRÝVÁ VÝHLEDY NA CELE ÚDOL. JEHO VELIKÁ OKNA VYHLÍŽÍ DO
DVOU SVĚTOVÝCH STRAN, DÍKY ČEMU JE BYT VIZY MAXIMÁLNĚ PROSVĚTLENÝ.



BOLESLAVOVA 3

311

2+kk
3. podlaží
45,2 m² + balkon

Umístění v budově



Přehled ploch

01 předstř.	4,7 m²
02 kuchyň + obývací pokoj	20,3 m²
03 ložnice	13,2 m²
04 koupelna + wc	4,2 m²
Úžitná plocha	42,4 m²
Stělová konstrukce	2,8 m²
Podlahová plocha	45,2 m²
05 balkon	13,1 m²
Celková plocha	58,3 m²

Technologie

Podlahové vytápění

Všechny informace a údaje uvedené v tomto inzerátu mají charakter pouze orientační a nejsou zárukou. Za obsah inzerátu zodpovídá výhradně Svoboda & Williams s.r.o. a Christie's International Real Estate. Všechny údaje jsou zveřejněny pouze pro informaci. Pro více informací kontaktujte Svoboda & Williams s.r.o. na telefonním čísle 224 224 224.

exkluzivní zastoupení
svoboda&williams | CHRISTIE'S
INTERNATIONAL REAL ESTATE