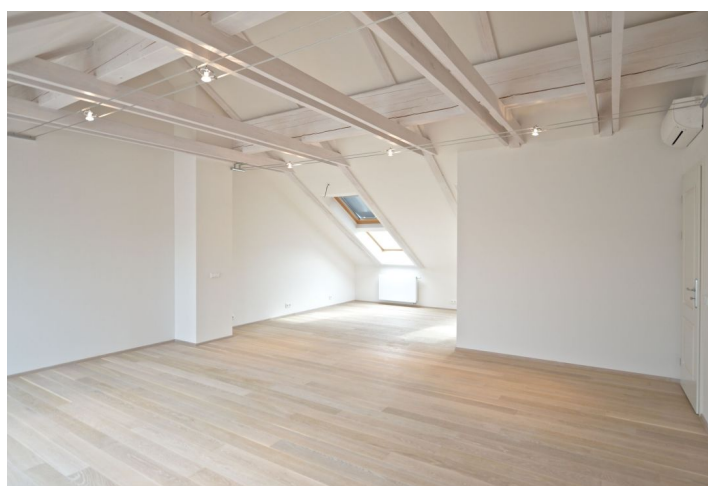
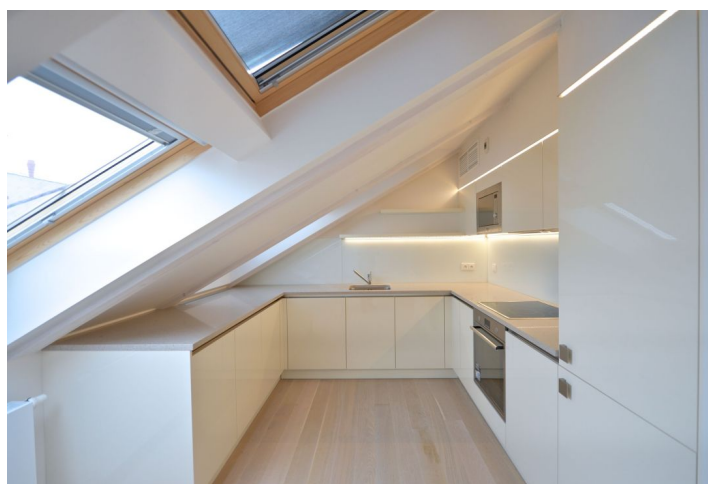




Apartment Two-bedroom (3+kk)

Rented

138.4 m², Prague 1, Nové Město, Petřská





Apartment Two-bedroom (3+kk)

Rented

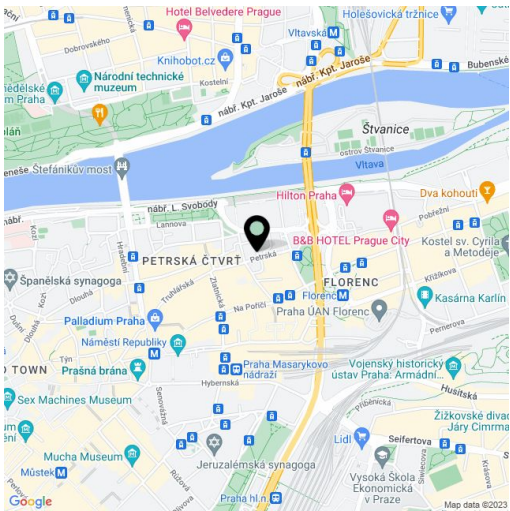
138.4 m², Prague 1, Nové Město, Petřská

| | |
|------------------|--|
| Total area | 138 m² |
| Parking | Available garage parking. |
| Garage | Yes |
| Cellar | Yes |
| Service price | Deposit for common building charges CZK 7,000/month. Electricity - transferred to the tenant. |
| PENB | G |
| Reference number | 10675 |
| Available from | Immediately |

This air-conditioned fully refurbished attic apartment is situated on the fifth floor of a completely renovated traditional building with an elevator. Located on a quiet street in the city center, within easy reach of quality restaurants, cafes, and shops. Just a few minutes' walk to the Náměstí republiky and Florenc metro stations, the Hilton Hotel, and the largest Czech shopping mall—Palladium. A swimming pool and a fitness center is a two-minute walk away, and the Štvanice tennis courts are close-by.

The interior features a 64 sq. m. living room with a fully fitted open plan kitchen and dining area, two bedrooms with built-in wardrobes, two bathrooms with a bathtub and a toilet (one is en-suite), a walk-in closet, a storage room, and an entry hall.

Elevator to the apartment, hardwood oak floors, tiles, security entry door, plenty of built-in storage, blinds, washing machine, dishwasher, microwave, video entry phone, 7.6 sq. m. cellar. Available garage parking for CZK 4,800 per month.



* Area of the unit according to the Civil Code. The area consists of the sum total area of the entire unit bounded by perimeter walls.