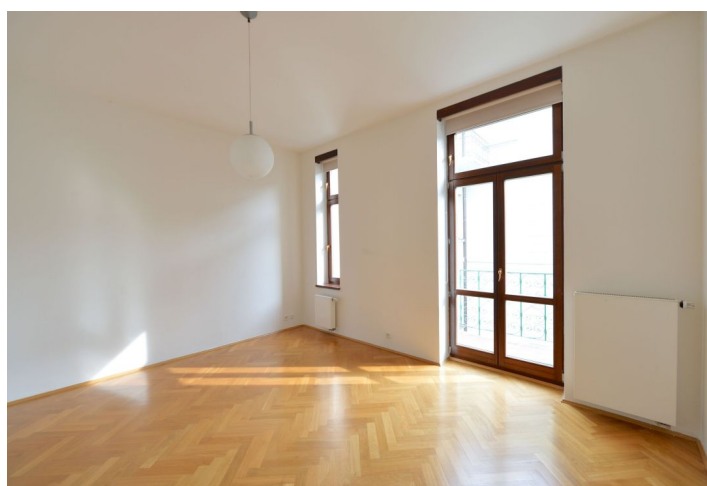
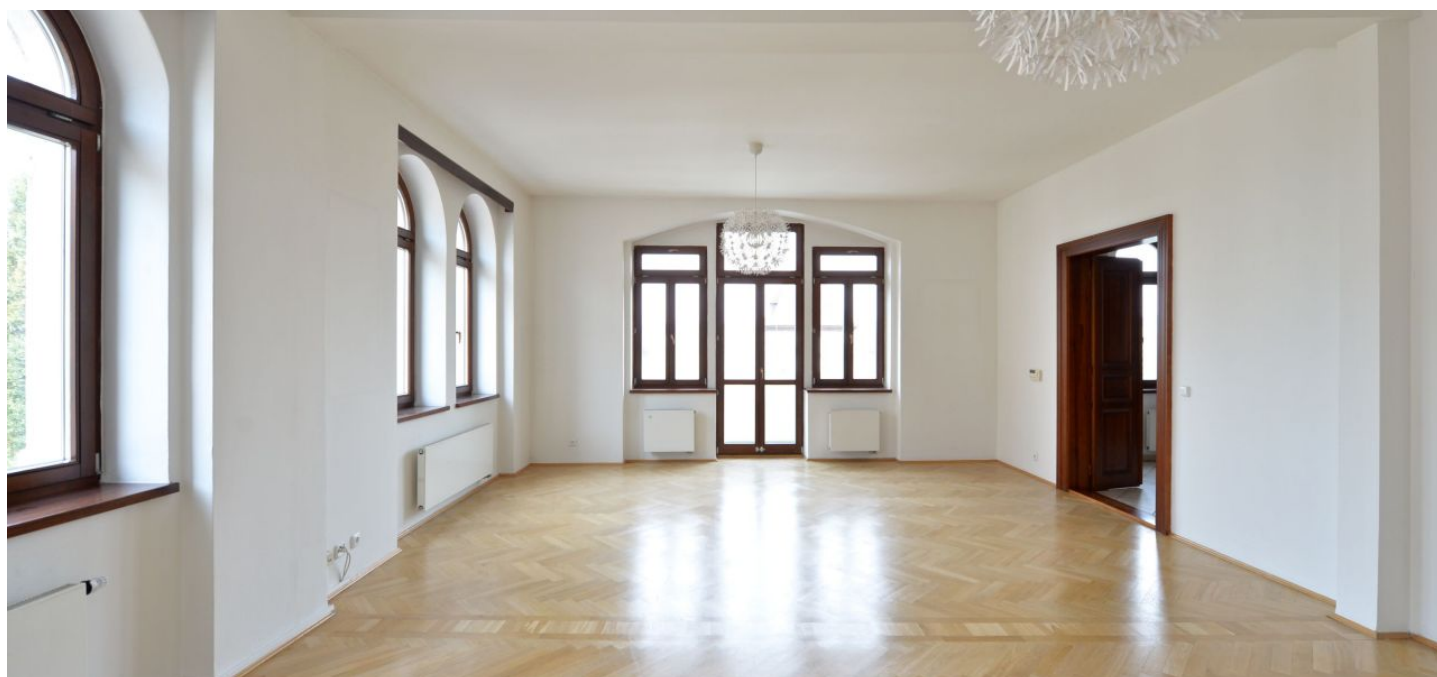




Apartment Five-bedroom (6+1)

Rented

200 m², Prague 5, Smíchov, Janáčkovo nábřeží





Apartment Five-bedroom (6+1)

Rented

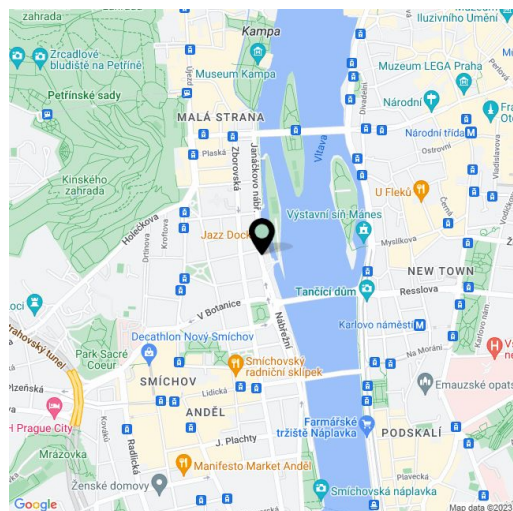
200 m², Prague 5, Smíchov, Janáčkovo nábřeží

Total area	200 m²
Parking	One parking space.
Cellar	-
PENB	G
Reference number	10921
Available from	Immediately

Sunny 5-bedroom 2-bathroom flat with 3 balconies and outstanding views of the river and National Theatre. Located on the Vltava riverbank, this late 19th century building has been totally refurbished and it offers a 24-hour reception, security camera surveillance, lift and quick access to the city center and Anděl commercial center.

With large and airy rooms, the interior of the flat includes living room, a fully fitted kitchen with dining area, five bedrooms, two bathrooms and two toilets.

Solid wood parquet floors, high ceilings, large windows, alarm, Internet and satellite TV connection, telephone line. The building has a sauna, fitness, Jacuzzi and a common winter garden. Monitored parking on the street in front of the building included. Common building charges and Internet are included in the rent. Utilities (gas, water and electricity) are billed separately.



* Area of the unit according to the Civil Code. The area consists of the sum total area of the entire unit bounded by perimeter walls.