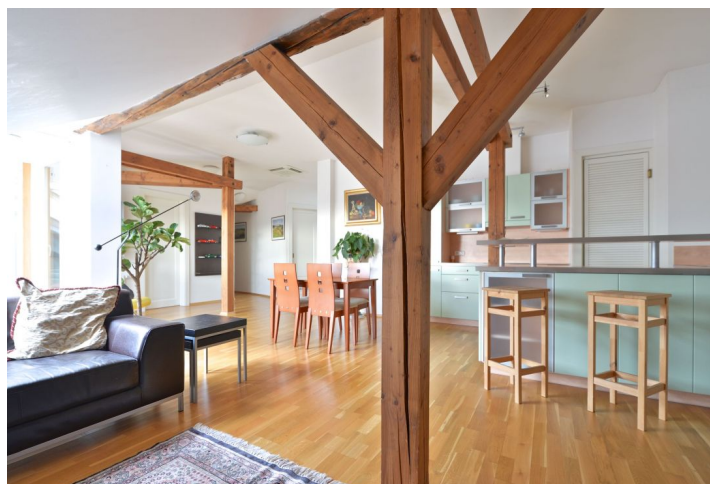




## Apartment Two-bedroom (3+kk)

Rented

134 m<sup>2</sup>, Prague 2, Vinohrady, Jana Masaryka





# Apartment Two-bedroom (3+kk)

Rented

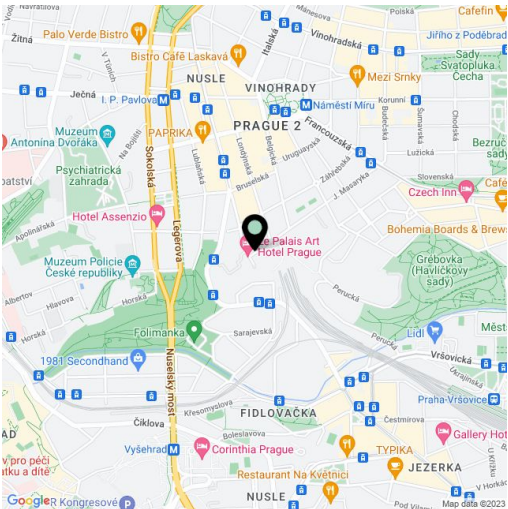
134 m², Prague 2, Vinohrady, Jana Masaryka

Total area	134 m²
Parking	Reserved outdoor parking.
Cellar	-
PENB	G
Reference number	11529
Available from	Immediately

Good quality furnished 2-bedroom attic flat on the fifth floor with lift in the prestigious Charlotta Residence, completely refurbished historic building with a beautiful entrance hall and well maintained common areas. Located in a quiet residential neighborhood popular with the expat community, close to the Havlíčkovy sady park, four blocks from Náměstí Míru metro and trams with quick access to the city center.

The flat has two bedrooms, a fully fitted and equipped kitchen open to the living room with access to terrace that can be easily closed and used as a winter garden, with great views over Prague. There is a pantry, full bathroom, guest toilet, and a walk-in closet.

Air-conditioning in the living room, storage, solid wood parquet floors, security entry door, beams, roof windows, heated tiled floors in the bathroom and toilet, dishwasher, video entry phone, cable TV, Internet. Night security. Reserved outdoor parking space included in the rent. Common building charges and utilities are billed separately.



\* Area of the unit according to the Civil Code. The area consists of the sum total area of the entire unit bounded by perimeter walls.