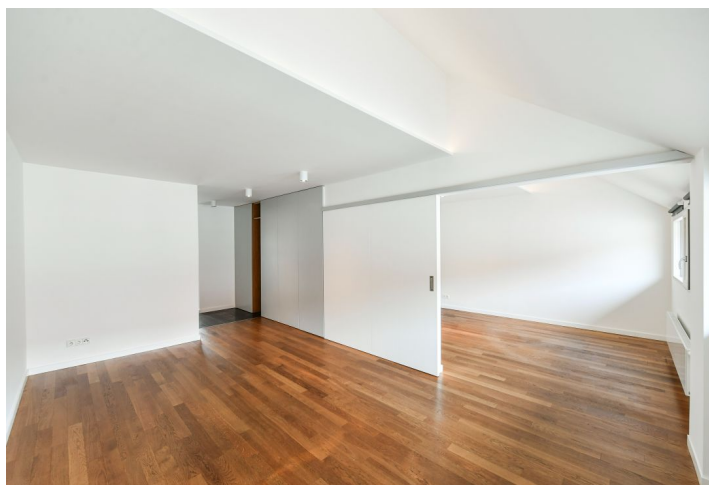
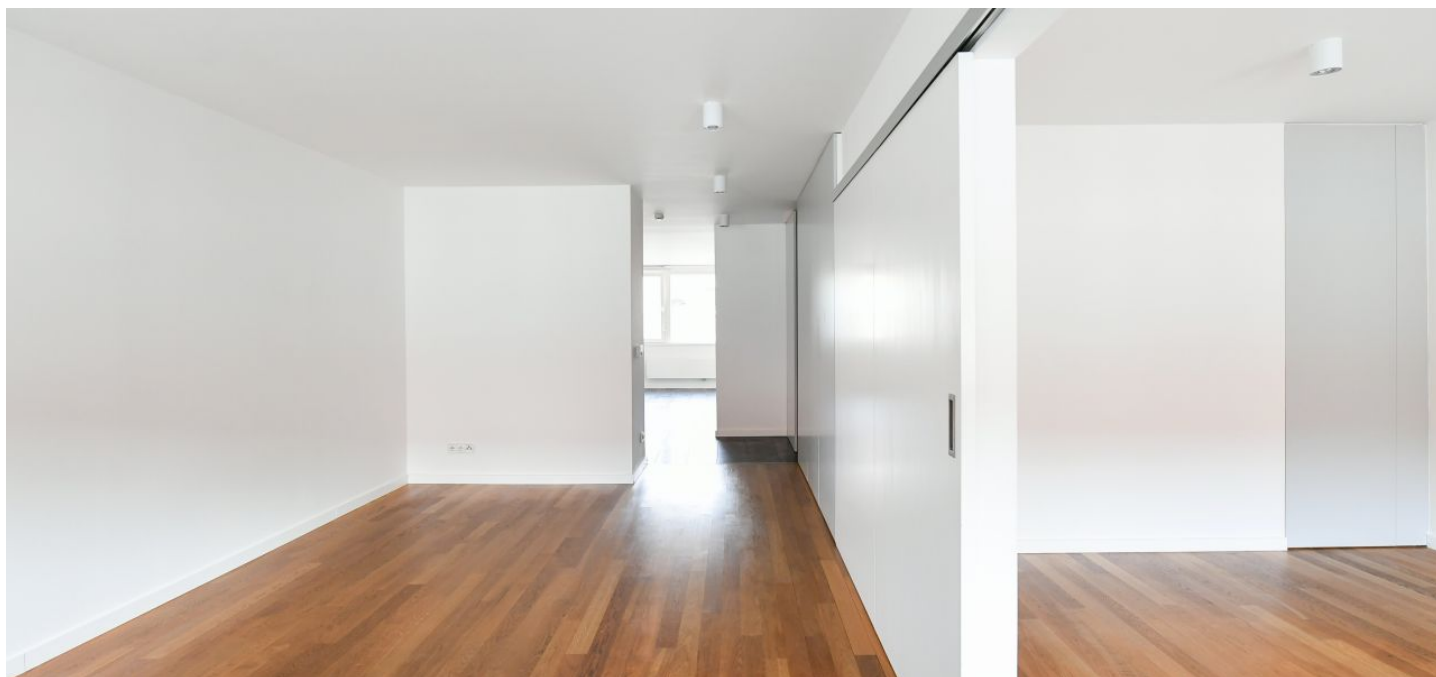




## Apartment Two-bedroom (3+1)

Rented

80 m², Prague 7, Bubeneč, Šmeralova





# Apartment Two-bedroom (3+1)

Rented

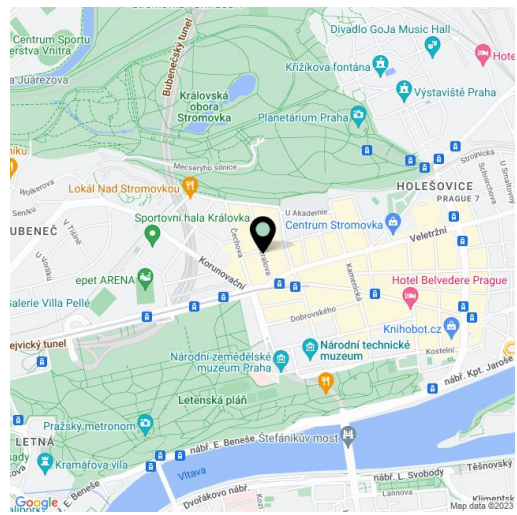
80 m², Prague 7, Bubeneč, Šmeralova

Total area	80 m²
Parking	-
Cellar	Yes
Service price	Common building charges CZK 800/person/month. Gas and electricity - transferred to the tenant.
PENB	G
Reference number	16672
Available from	Immediately

Fully refurbished, good quality 2-bedroom attic apartment on the 4th floor of a completely reconstructed building with an elevator located on a quiet street only steps from Stromovka Park, the largest park in Prague, a 15-minute walk to the center through another popular Prague park (Letná), and not far from Prague Castle. Tram connections (a tram stop is one minute from the building), convenient to the Hradčanská (line A) and Vltavská (line C) metro stations.

Benefiting from plenty of built-in storage, the apartment includes a fully fitted eat-in kitchen, a living room, two bedrooms with built-in wardrobes, a bathroom with a bathtub and double sink, a separate toilet, and an open entry hall.

Parquet floors and tiles, large windows, security door, gas boiler. A basement unit available.



\* Area of the unit according to the Civil Code. The area consists of the sum total area of the entire unit bounded by perimeter walls.