



## Apartment One-bedroom (2+1)

€ 452 332 | CZK 11 310 570

69 m², Prague 1, Nové Město, V Jircharich

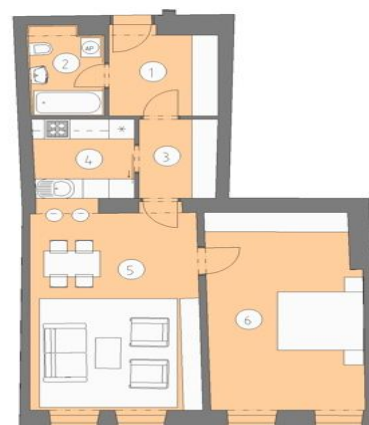


**Apartment 3**

No.	Room	m²
1	Entrance hall	7,11
2	Bathroom with toilet	4,66
3	Wardrobe	4,47
4	Kitchen	6,47
5	Living room	24,8
6	Bedroom	21,88
Total m²		69,39

**Byt č. 3**

č.	místnost	m²
1	Vstupní hala	7,11
2	Koupelna a WC	4,66
3	Salna	4,47
4	Kuchyňský kout	6,47
5	Obývací pokoj	24,8
6	Ložnice	21,88
Celkem m²		69,39





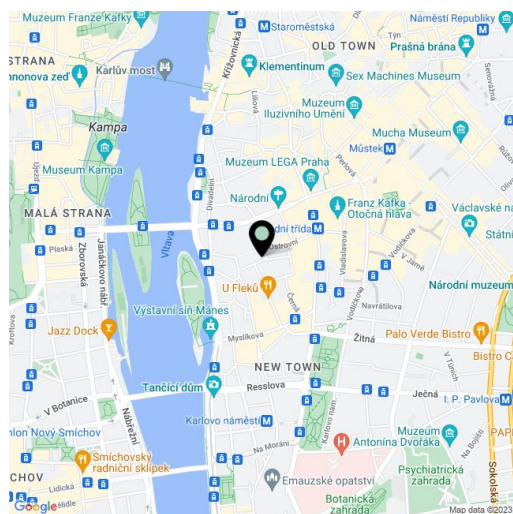
## Apartment One-bedroom (2+1)

€ 452 332 | CZK 11 310 570

69 m², Prague 1, Nové Město, V Jircharich

Total area	69 m²
Parking	Yes
Cellar	-
PENB	G
Reference number	1773

Ideally designed apartment on the 3rd floor of a completely renovated magnificent residence situated a one minute walk from the National Theater provides you with maximum you can ask of a great investment into Prague's residential real estate. Located in the very center of Prague 1 in a surprisingly quiet street, a few steps from Narodni street or Zofin, within easy reach of the Old Town Square and Wenceslas Square. Underground parking is right behind the corner under the New Scene of the National Theater building. The apartment has entry hall, living room with a dining area, kitchen, bedroom, fully appointed bathroom and built-in wardrobes. The apartment features modern design, wooden and tile floors throughout, historic replica original wooden doors and windows matching the current technical requirements, preparation for air conditioning, video-intercom, installations for satellite and cable TV, STA, and alarm. Completion January 2008. The purchase price is subject to VAT



\* Area of the unit according to the Civil Code. The area consists of the sum total area of the entire unit bounded by perimeter walls.