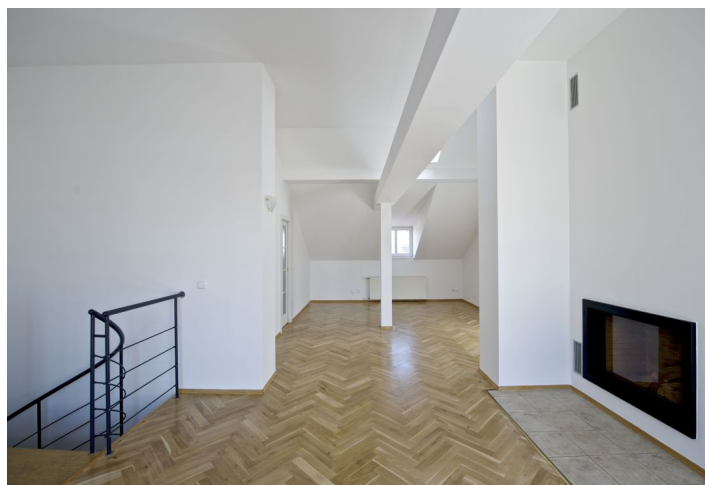




Apartment Four-bedroom (5+kk)

Rented

155 m², Prague 2, Vinohrady, Záhřebská





Apartment Four-bedroom (5+kk)

Rented

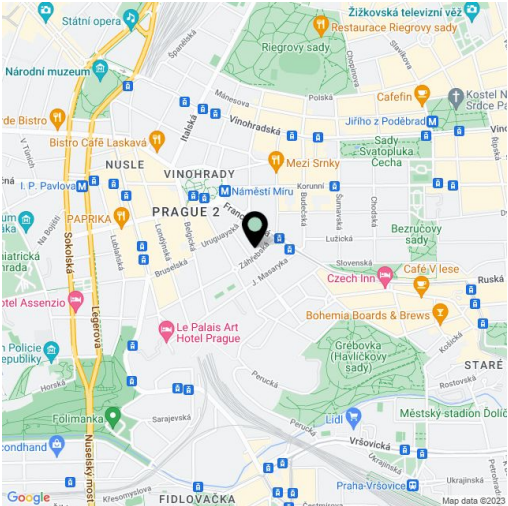
155 m², Prague 2, Vinohrady, Záhřebská

Total area	174 m²
Floor area*	155 m²
Terrace	19 m²
Parking	Yes
Garage	Yes
Cellar	Yes
PENB	G
Reference number	18783
Available from	Immediately

Sunny split-level flat complete with a big terrace offering views of Prague Castle, situated on the 5th and 6th floors of a reconstructed Vinohrady building with an elevator. The apartment features 1 garage parking space. Attractive location, only a few steps from Náměstí Míru Square and near Havlíčkovy Sady Park.

The lower level consists of the private part of the apartment that includes 3 bedrooms and 2 bathrooms. A spiral staircase leads to the upper floor that offers a spacious and bright living room (44.8 m²) with a fireplace and access to the terrace, a fully equipped kitchen and a separate toilet. The entry to the apartment is from the 6th floor.

The equipment includes parquet floors, built-in wardrobes in the bedrooms and French windows in the living room. The apartment is located in the sought after residential neighborhood of Prague 2 with all public amenities within reach. Close to a tram stop and Náměstí Míru metro station. Common building charges and utilities approx. CZK 7800/month.



* Area of the unit according to the Civil Code. The area consists of the sum total area of the entire unit bounded by perimeter walls.