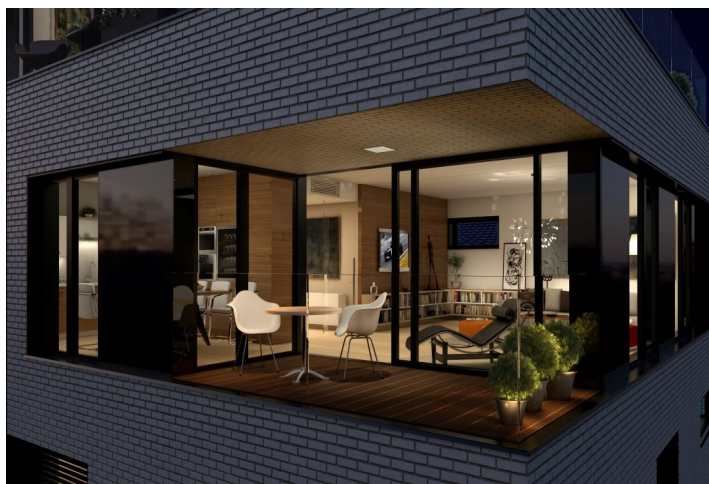




Apartment Three-bedroom (4+kk)

Ask for price

167 m², Prague 6, Střešovice, U Laboratoře





Apartment Three-bedroom (4+kk)

[Ask for price](#)

167 m², Prague 6, Střešovice, U Laboratoře

Total area	183 m²
Floor area*	167 m²
Loggia	16 m²
Parking	2 parking places under the building
Garage	Yes
Cellar	Yes
PENB	B
Reference number	18945

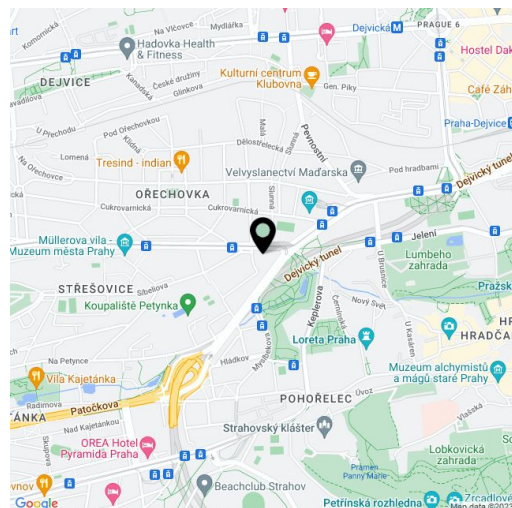
Top-quality equipped three-bedroom apartment with 2 loggias, 2 underground garage parking spaces and a cellar, situated on the 1st floor of a modern villa-house embodied into the unique Royal Triangle project. Presented by the renowned Schindler Seko architectural studio, these eight associated residential buildings form a cleverly-designed, carefully secured area with parking, reception and common garden.

The layout features an open-plan living room with preparation for kitchen, dining area and access to loggia, 3 bedrooms (two with access to another loggia, one of them also with en-suite bathroom and walk-in closet), common bathroom, guest toilet, and a water closet.

Residence Royal Triangle meets the highest standards of original modern housing that offers apartments from **one-bedroom to three-bedroom layouts**. Naturally, the **highest quality materials** are used, from three-layer massive varnished floors in living rooms to the tropical wood on the balconies and terraces to large format tiles in bathrooms. All apartments have a capillary cooling system in ceilings and ventilation with heat recovery, as well as **intelligent home control** (touch and remote system using iOS or Android), that includes, for example, a central lighting control system and thermostat. Standard features also include underfloor heating, designer bathroom radiators, doors with internal hinges and **aluminum windows with triple glazing**. One to two **parking spaces** in the underground garage and a **cellar** are included in the price of each apartment.

Located in a popular residential area with excellent public transport connections to the city center and full amenities, including nurseries, schools (also international) and medical facilities. You will love this locality - with the nearby Prague Castle, Jelení Příkop, and lush parks - there is an abundance of atmosphere.

Interior 167.13 m², 2 loggias 16.33 m² + 2 parking spaces and a cellar 15.58 m².



* Area of the unit according to the Civil Code. The area consists of the sum total area of the entire unit bounded by perimeter walls.



Apartment Three-bedroom (4+kk)

167 m², Prague 6, Střešovice, U Laboratoře

Ask for price



BUILDING A | 2ND FLOOR | 4+KK | 167 M²

A.2.1



Apartment Three-bedroom (4+kk)

Ask for price

167 m², Prague 6, Střešovice, U Laboratoře

01	VSTUPNÍ HALA ENTRANCE HALL	13,22 m²
02	OBÝVACÍ POKOJ + KK LIVING ROOM	73,09 m²
03	CHODBA HALLWAY	7,83 m²
04	POKOJ ROOM	11,83 m²
05	POKOJ ROOM	14,43 m²
06	LOŽNICE BEDROOM	18,32 m²
07	ŠATNA CLOSET	5,91 m²
08	KOUPELNA BATHROOM	6,75 m²
09	KOUPELNA BATHROOM	9,73 m²
10	TECH. MÍSTNOST TECHNICAL ROOM	3,06 m²
11	WC	2,96 m²
OBYTNÁ PLOCHA LIVING SPACE		167,13 m²
22	LODŽIE LOGGIA	8,29 m²
23	LODŽIE LOGGIA	8,04 m²
S106	SKLEP CELLAR	15,58 m²
CELKEM TOTAL		199,04 m²