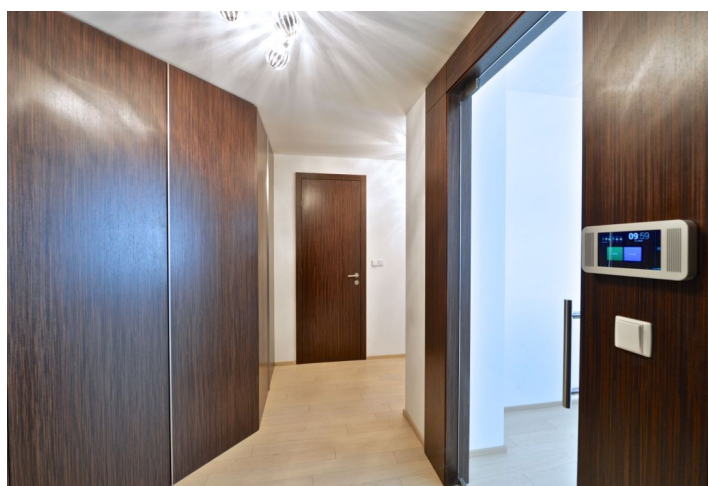




Apartment One-bedroom (2+kk)

79 m², Prague 6, Dejvice, Bechyňova

Rented





Apartment One-bedroom (2+kk)

Rented

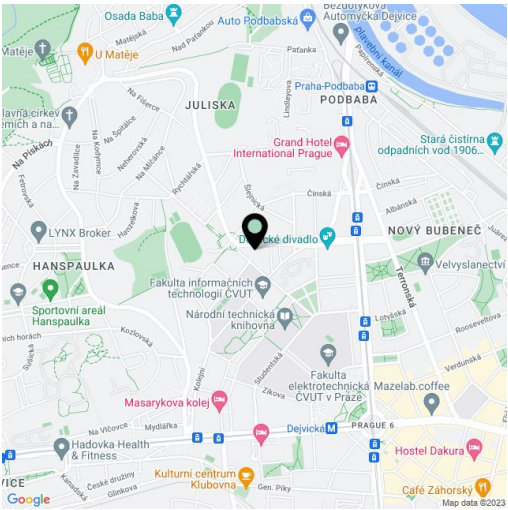
79 m², Prague 6, Dejvice, Bechyňova

Total area	79 m²
Parking	Garage space.
Garage	Yes
Cellar	Yes
PENB	G
Reference number	19871
Available from	Immediately

Modern furnished 1-bedroom flat on the first floor in a brand new modern building with a lift and underground parking. Located in an attractive Dejvice residential area a five minute walk to Dejvická metro station, steps to the Czech Technical University campus, within easy reach of full public amenities and Stromovka Park, and convenient to the airport and numerous international schools.

The interior features a spacious living room with a fully fitted open kitchen and dining area, one bedroom, bathroom with a walk-in shower and tub, toilet / laundry room, and entry hall with built-in storage.

Floating floors, French windows, security entry door, central heating, washer, dishwasher, vacuum cleaner, fold out sofas, cable TV, Internet, camera system, video entry phone, basement storage, pram and bike storage in the building. One garage parking space available at CZK 2000/month. Common building charges, water and heating CZK 4000/month for two persons. Deposit for electricity CZK 1000/month.



* Area of the unit according to the Civil Code. The area consists of the sum total area of the entire unit bounded by perimeter walls.