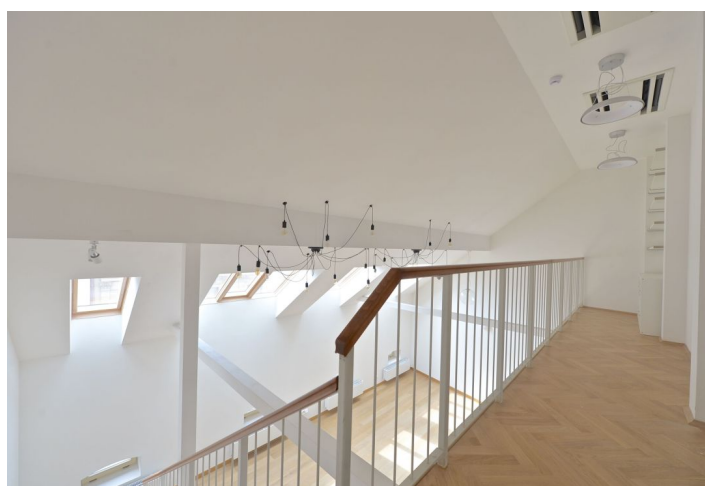
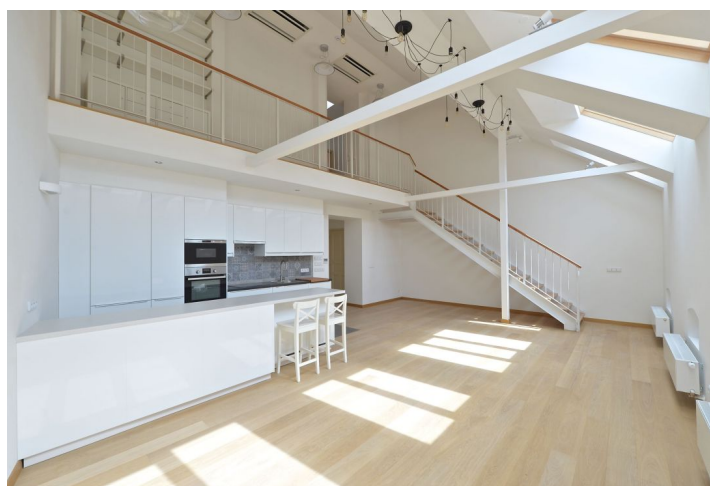
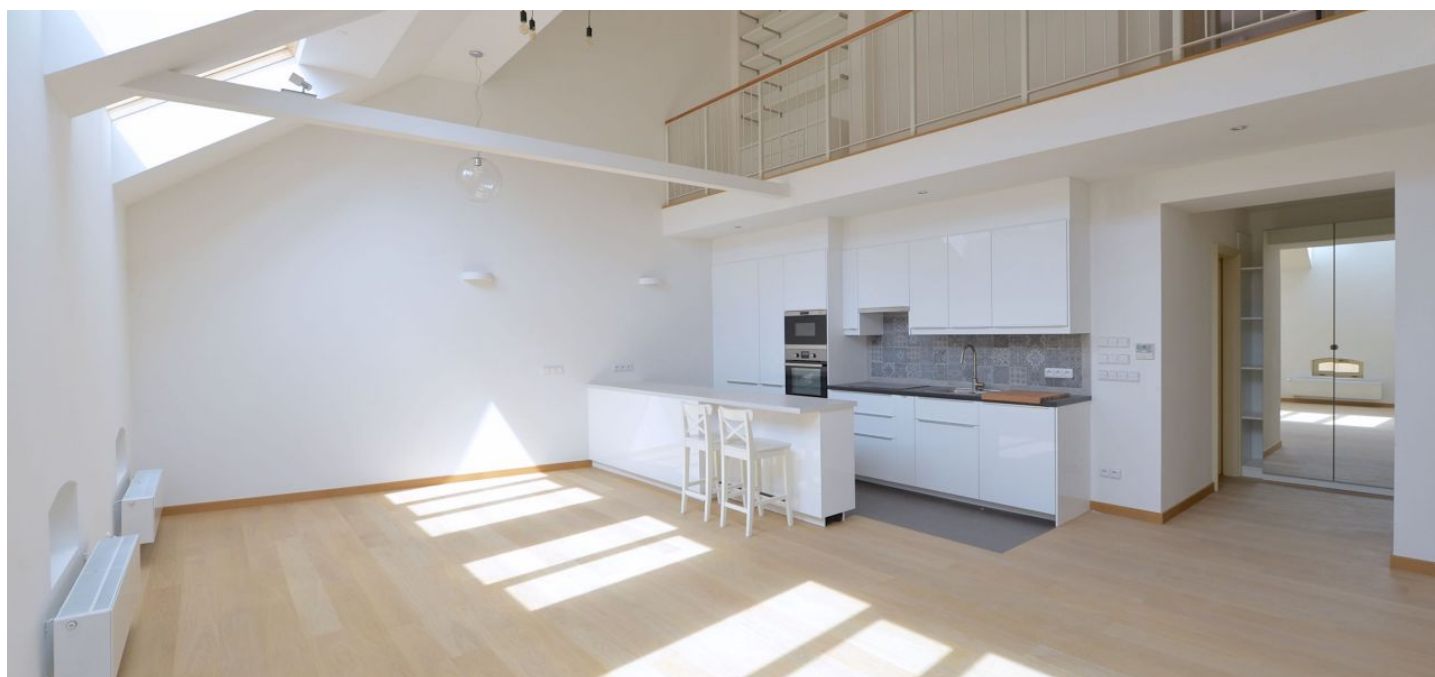




Apartment Three-bedroom (4+kk)

Rented

150 m², Prague 1, Nové Město, Soukenická





Apartment Three-bedroom (4+kk)

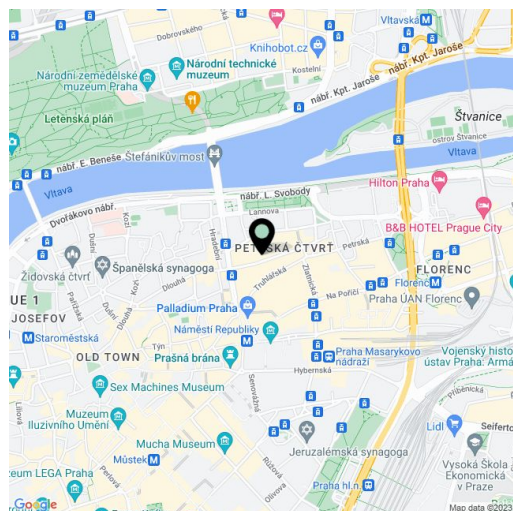
Rented150 m², Prague 1, Nové Město, Soukenická

Total area	150 m ²
Parking	Secure courtyard parking.
Cellar	-
PENB	G
Reference number	20466
Available from	Immediately

Brand new fully renovated partly furnished 3-bedroom 2-bathroom flat on the fifth floor of a completely refurbished historic building with a new lift and parking. Situated just moments from Náměstí Republiky Square with metro, trams and the Palladium and Kotva shopping centers, in the heart of Prague. The central location boasts rich cultural and social venues and full amenities.

The ground floor features an entry hall, a separate studio incl. a bedroom, a fitted kitchenette and shower bathroom with toilet, plus a spacious living room with a fully fitted and equipped open kitchen. The upper floor includes a large gallery, two bedrooms, bathroom (tub, walk-in shower, toilet), and a well organized laundry room.

Preserved original details, air-conditioning, high quality finishes and materials, hardwood parquet flooring and tiles, wooden windows, security entry door, built-in wardrobes, independent gas boiler, washer / dryer, induction cooktop, combination oven, dishwasher, blackout curtains, audio entry phone. Can be fully furnished at a higher rent. One secure parking space in the courtyard available at CZK 4000/month. Common building charges and water around CZK 3000/month. Gas and electricity will be transferred to the tenant.



* Area of the unit according to the Civil Code. The area consists of the sum total area of the entire unit bounded by perimeter walls.