



Apartment Four-bedroom (5+kk)

Rented

250 m², Prague 3, Žižkov, Kališnická





Apartment Four-bedroom (5+kk)

Rented

250 m², Prague 3, Žižkov, Kališnická

Total area	440 m²
Floor area*	250 m²
Terrace	190 m²
Parking	Two parking spaces included.
Garage	Yes
Cellar	-

Service price	Common building charges including water and heating CZK 30,000/month. Electricity will be transferred to the tenant.
---------------	--

PENB	G
------	---

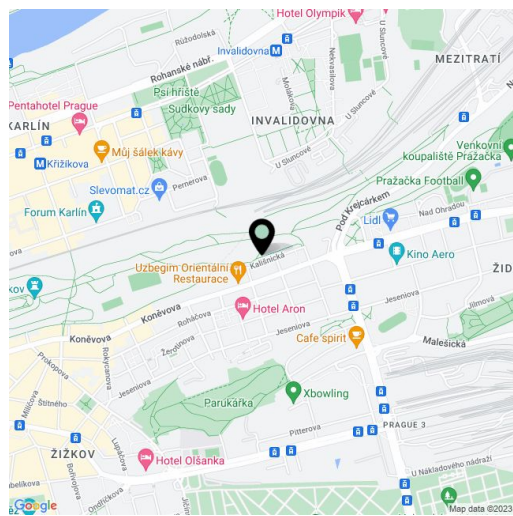
Reference number	2050
------------------	------

Available from	Immediately
----------------	-------------

This amazing, top quality air-conditioned 4-bedroom 2-bathroom penthouse with 190 sq. m. of terraces and a Jacuzzi is on the eighth floor of the recently built Park Vítkov residential project. Located on the edge of a large park, with good transportation connections and quick access to the city center, the project's amenities include a 24-hour reception, fitness room, sauna, and underground parking. Sports, relaxation, and shopping facilities are nearby.

The interior offers 4 bedrooms and 2 bathrooms. Its main feature is a lounge with a fully equipped open plan kitchen and three separate doors to the terrace with a wooden floor and Jacuzzi. Three bedrooms come with balconies and one has a built-in wardrobe and dressing room as well as its own bathroom with a bathtub, shower, and toilet. The second bathroom has a bathtub. Separate toilet.

Built-in closet in the entrance hall, tropical wood parquet floors, tiles, large windows, washer/dryer, top-of-the-line kitchen appliances, dishwasher, coffeemaker, wine fridge, designer bathrooms, basement storage unit, elevator. Possible to furnishe at a higher price. Available from January 2023.



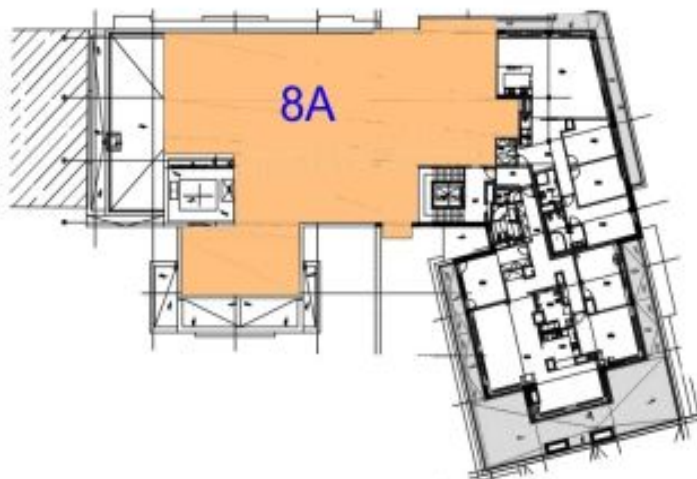
* Area of the unit according to the Civil Code. The area consists of the sum total area of the entire unit bounded by perimeter walls.



Apartment Four-bedroom (5+kk)

250 m², Prague 3, Žižkov, Kališnická

Rented



BYT 8A - PŮDORYS (M1:200)



Číslo	Název	Plocha
BA11	PŘEDSÍN	16,70
BA12	OBÝVACÍ PRACOVNA	6,50
BA13	KUCHYŇA	4,20
BA14	KOUPELNA + WC	8,70
BA15	POROU	15,70
BA16	OBÝVACÍ POROU	83,80
BA17	KUCHYŇSKÝ KOUT	37,70
BA18	PŘEDSÍŇKA WC	2,40
BA19	WC	1,80
BA10	CHODBA	8,40
BA11	POROU	17,90
BA12	POROU	18,10
BA13	POROU	19,10
BA14	KOUPELNA + WC	11,90
SOUDČET MÍSTNOSTÍ		248,20
BA15	BALKON	5,00
BA16	BALKON	2,80
BA17	TERASA	106,30
BA18	TERASA	17,30
BA19	TERASA	58,20
BA20	SKLÍPKOVÝ KOUT	3,80
CELKOVÁ PLOCHA BYTU		443,16

M 1:200
0 1 2 3 4 5