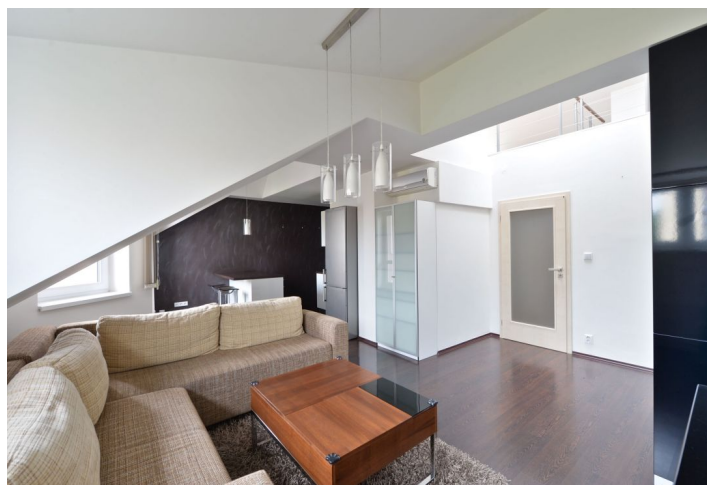




## Apartment One-bedroom (2+kk)

70 m², Prague 10, Strašnice, Gutova

Rented





# Apartment One-bedroom (2+kk)

Rented

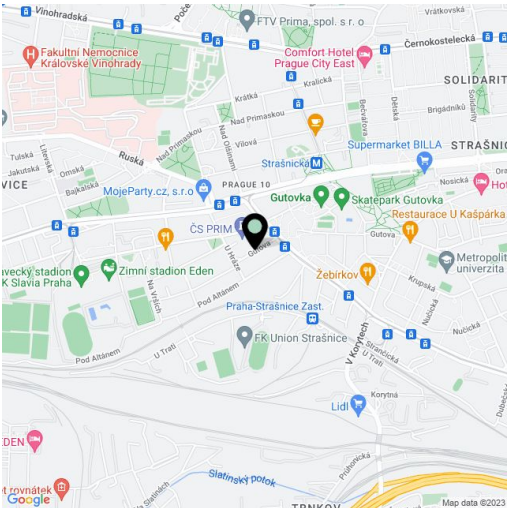
70 m², Prague 10, Strašnice, Gutova

Total area	75 m²
Floor area*	70 m²
Balcony	5 m²
Parking	Garage parking.
Garage	Yes
Cellar	Yes
PENB	G
Reference number	20527
Available from	Immediately

Furnished air-conditioned 1-bedroom split-level attic flat with a balcony, situated on the sixth floor of a modern building with a lift and underground parking, just a five minute walk to Strašnická metro station, line A. Quiet residential area with quick access to the city center, good amenities in the area, and a park and primary school within walking distance.

The lower level offers living / dining room with a fully fitted open kitchen and access to the balcony, bathroom with tub and toilet, and entry hall. The upper floor includes an open gallery that is used as a bedroom with an office area.

Green views, floating floors, tiles, security entry door, lots of built-in wardrobes, dishwasher, microwave oven, two TVs, video entry phone, basement storage unit. One garage space available at CZK 1500 per month. Common building charges, water and heating CZK 2600 per month. Electricity is billed separately.



\* Area of the unit according to the Civil Code. The area consists of the sum total area of the entire unit bounded by perimeter walls.