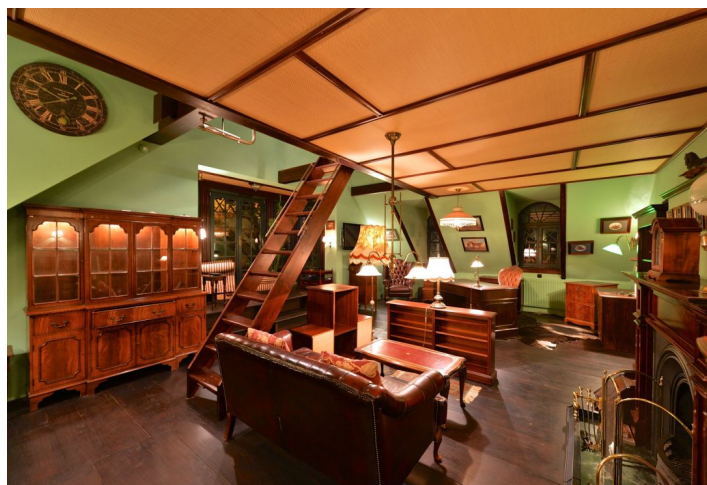




## House Four-bedroom (5+1)

Sold

255 m², Praha-západ, Černošice







## House Four-bedroom (5+1)

**Sold**

255 m², Praha-západ, Černošice

Plot	703 m²
Foot print	386 m²
Garden	317 m²
Parking	Yes
Cellar	Yes
PENB	C
Reference number	21078

**Completely furnished in the English style and boasting a fireplace, jacuzzi, outdoor swimming pool and a unique atmosphere is this exceptional, 4-bedroom 2-bathroom family house. The property is located in a quiet and green part of Černošice, just steps from the forest and only a 5-minute walk from the train station with fast connections to Smíchovské nádraží.**

The house has three floors, including the attic and basement. One of the dominant elements is a lovely conservatory, located on the ground floor and connected by a double door to the patio and to the main living space featuring a lounge with **a large freshwater aquarium**, fully equipped kitchen, and a dining room. The ground floor also offers a walk-in wardrobe, small bathroom with shower, and a utility room with built-in terrariums and aquarium operation. The attic consists of a large office with built-in sleeping mezzanine, accessible by a pull-out staircase, two childrens' bedrooms, master bathroom with jacuzzi and toilet, and a reading corner in the gallery. The basement comprises a boiler room, a storage room and a sauna.

The house is completely equipped with **valuable antique furniture** and custom-made elements, such as metal chandeliers and sophisticated lighting of cupboards and shelves in the kitchen. Other amenities include tiles on the ground floor and laminate flooring on the first floor, wooden windows, fully equipped kitchen with an English stove (5 burners, 2 ovens) and Italian stone sink. The purchase price includes all the furniture and equipment shown in photographs. The garden offers an open **terrace with stone fireplace**, and a covered outdoor pool.

The villa is situated in a quiet part of Černošice, which is considered to be an attractive residential area offering full amenities as well as many opportunities for recreation (hiking, biking); The Brdské Forest and Berounka River are both close to the town. Easy access to the center of Prague by train and car.

Interior 255 m², built-up area 386 m², garden 317 m², plot 703 m².