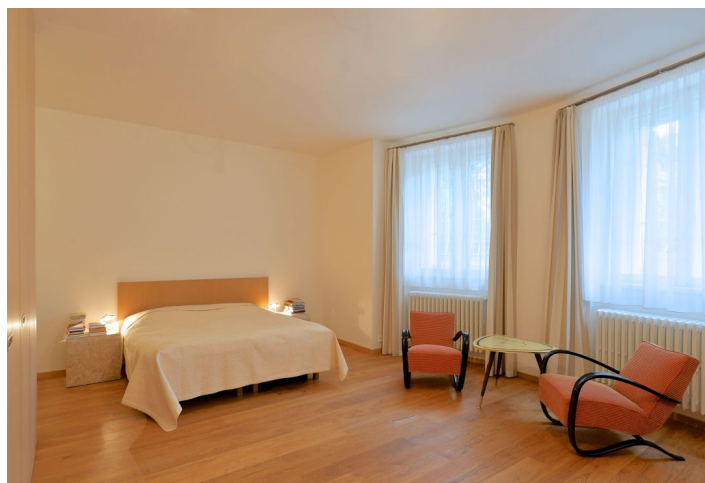
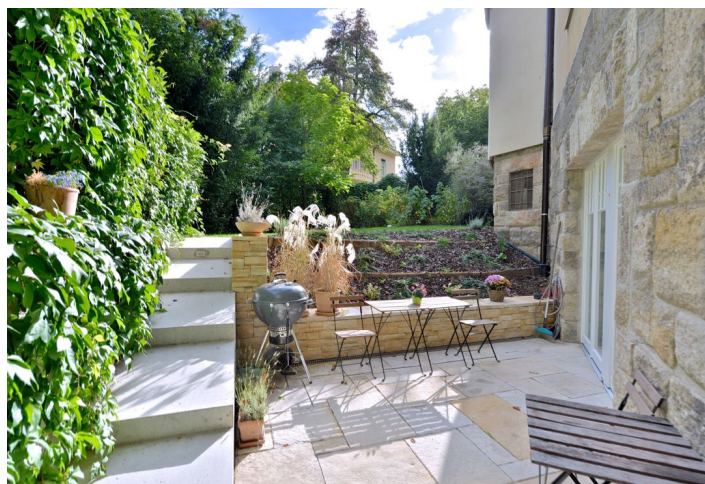




## Apartment Two-bedroom (3+kk)

Rented

130 m², Prague 1, Hradčany, Na baště sv. Tomáše





## Apartment Two-bedroom (3+kk)

**Rented**

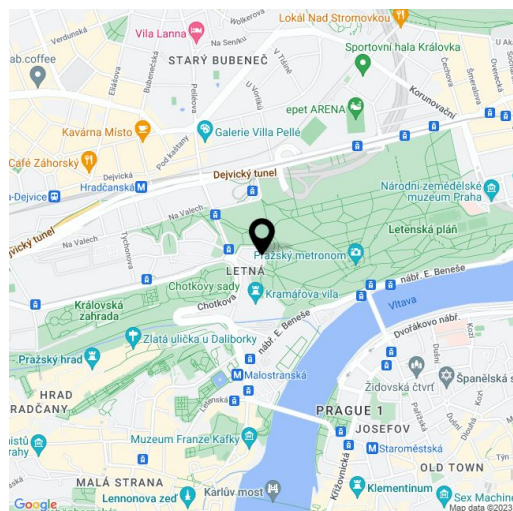
130 m², Prague 1, Hradčany, Na baště sv. Tomáše

Total area	130 m²
Parking	-
Cellar	-
PENB	G
Reference number	21235
Available from	Immediately

Largely benefiting from a wonderful location next to Letná Park and just minutes from the Prague Castle complex, this unfurnished 2-bedroom 2-bathroom flat enjoys a private patio and a part of a shared garden. Situated on the lower ground floor of a completely reconstructed traditional villa that located on a quiet street surrounded by greenery in the prestigious Hradčany neighborhood, near the official residence of the Prime Minister of the Czech Republic. Just a few minutes' walk from the Malostranská and Hradčanská metro stations, full amenities in the immediate neighborhood including quality cafes and restaurants, convenient to the airport and international schools.

The tastefully refurbished interior features a comfortable living room and a fully fitted open kitchen, both with French windows opening into the patio and garden, two bedrooms with built-in wardrobes and en-suite bathrooms (shower, bathtub / shower, toilet), a guest toilet, and a spacious entry hall with lots of built-in storage.

Tranquil atmosphere, green views, vaulted ceilings, wooden floors, decorative tiling, pandomo flooring, security entry door, gas boiler, washer, dryer, dishwasher, alarm. Parking on the street. Common building charges and deposit for utilities around CZK 8700/month. **UNFURNISHED.**



\* Area of the unit according to the Civil Code. The area consists of the sum total area of the entire unit bounded by perimeter walls.