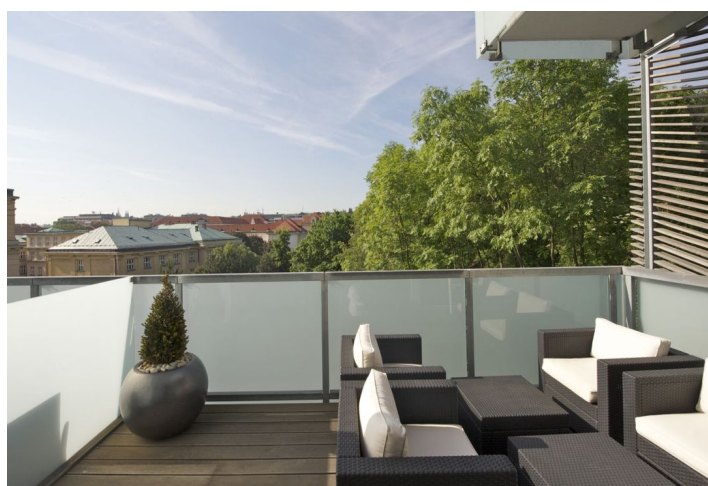
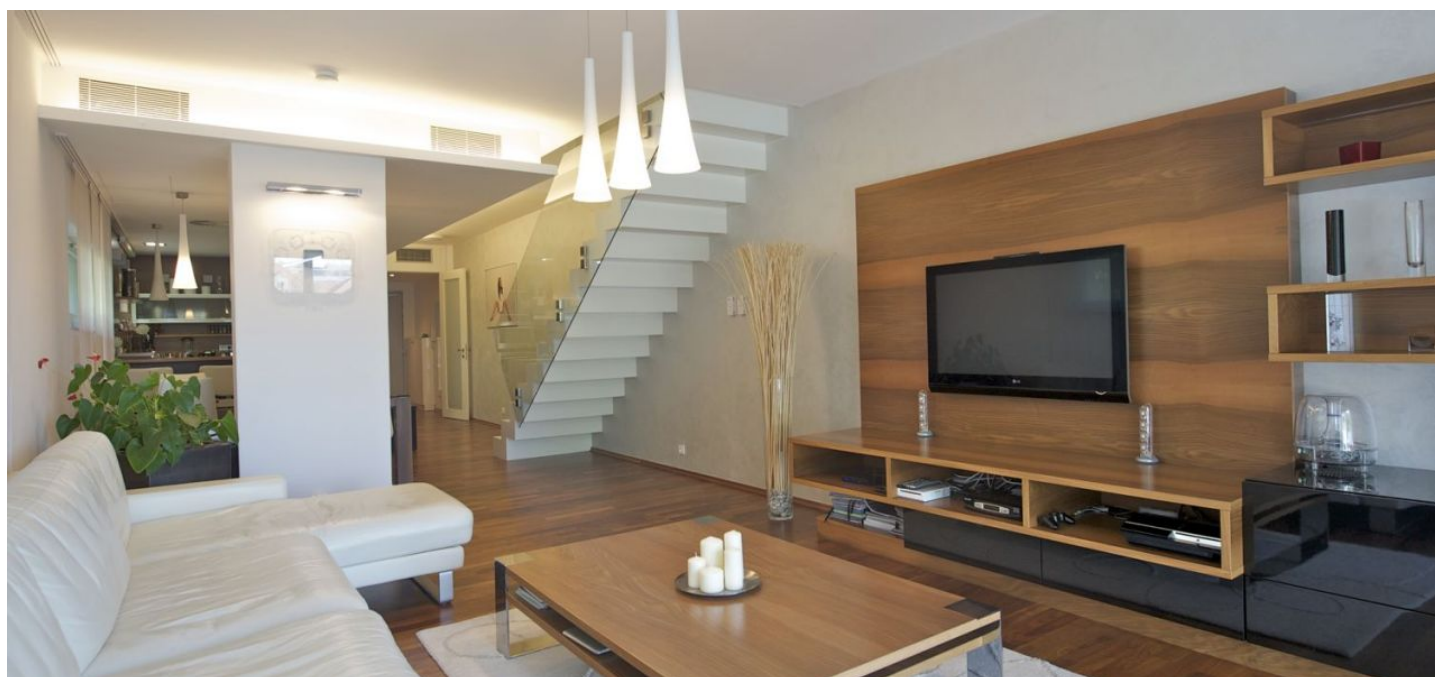




Apartment Two-bedroom (3+kk)

Sold

108 m², Prague 6, Dejvice, Kolejní





Apartment Two-bedroom (3+kk)

Sold108 m², Prague 6, Dejvice, Kolejní

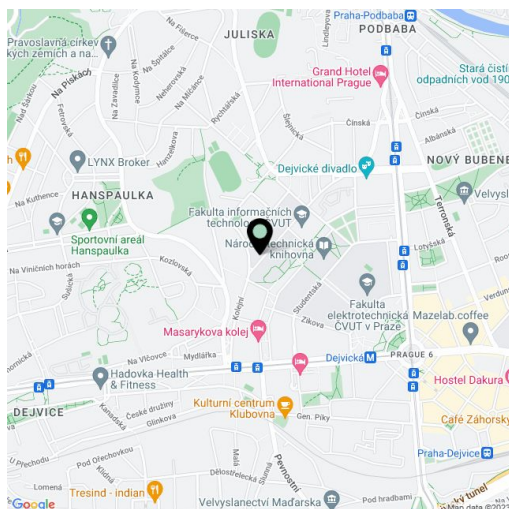
Total area	141 m ²
Floor area*	108 m ²
Terrace	33 m ²
Parking	2 garage parking spaces
Garage	Yes
Cellar	Yes
Service price	8 500 CZK monthly
PENB	G
Reference number	22679

Top standard 2-bedroom 2-bathroom penthouse with roof terrace, situated on the 3rd and 4th floors of a newly built residential complex with underground parking. The building is located in one of the most attractive areas on the border of the Hanspaulka residential district, only a few steps from parks connecting the area with the Stromovka Royal Enclosure.

This design split-level flat offers an air-conditioned living room with dining area and fully fitted open kitchen, guest toilet, and entry hall with walk-in closet. The second (private) floor features 2 bedrooms (one w/ balcony access, one w/ terrace access), 2 bathrooms. Hardwood flooring, **custom-made furniture**, **Siemens** kitchen appliances, design bathroom fixtures, floor heating, electric blinds, alarm. The purchase price is listed including **2 garage parking spaces** and **cellar**.

Pleasant location only 5 minutes on foot to the Dejvická metro station, close to the ČVUT university campus, within easy reach of all public amenities.

Interior 107,46 m², terraces + balcony 33,33 m², cellar 4,89 m².



* Area of the unit according to the Civil Code. The area consists of the sum total area of the entire unit bounded by perimeter walls.