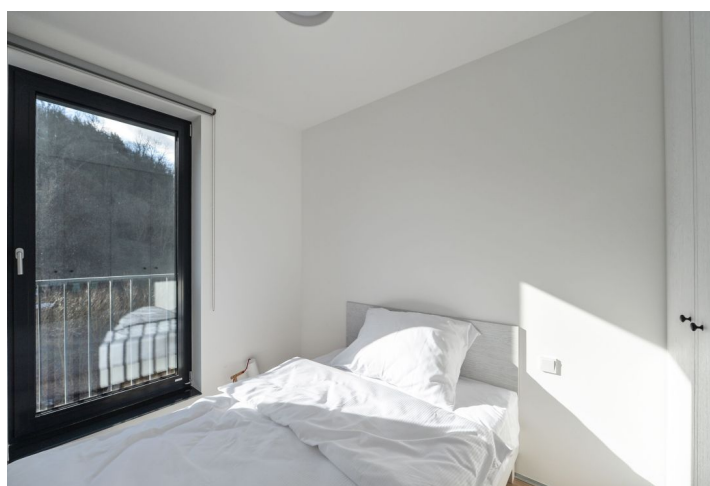




## Apartment One-bedroom (2+kk)

€ 855 | CZK 21 500

34 m², Prague 6, Dejvice, V Šáreckém údolí





## Apartment One-bedroom (2+kk)

€ 855 | CZK 21 500

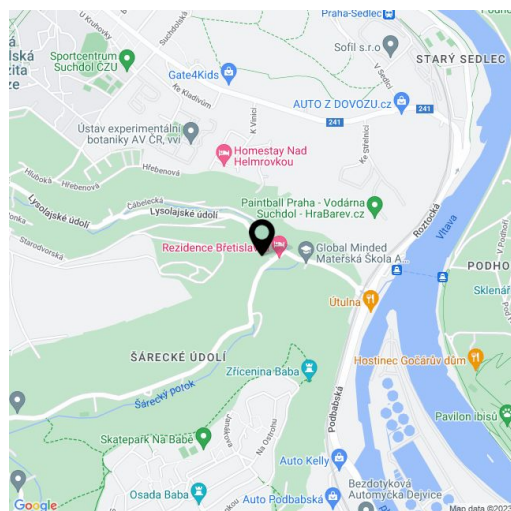
34 m², Prague 6, Dejvice, V Šáreckém údolí

Total area	34 m²
Parking	Garage parking included.
Garage	Yes
Cellar	-
PENB	G
Reference number	25101
Available from	Immediately

This fully furnished 1-bedroom apartment with beautiful green views is on the first floor of the Břetislavka residential project ([bretislavka.cz](https://bretislavka.cz)), designed by the m4 architekti studio with superb services, garage parking, and a landscaped garden on the edge of a brook. Located in the charming Šárecká Valley surrounded by green hills and a peaceful countryside, with quick connections to the city center, the airport and international schools. Just a few bus stops from the Dejvická metro with full amenities in the area. Project amenities include an elevator, 24/7 security, an online reception desk, catering services provided by the adjacent restaurant, bike rentals, barbecue, information about Prague cultural events, and more.

The interior features a living room with a fully fitted open plan kitchen and study area, one bedroom, a shower bathroom with a toilet, and an entrance hall.

Garden views, intelligent home control system, alarm, vinyl floors, underfloor heating, security entry door, built-in wardrobes and storage, roller blinds, TV, washer, dishwasher, combination microwave oven, basic dishes and kitchenware, fold-out futon sofa bed, bed linen and towels. One garage parking space included. The rent also includes common building charges, Internet, security, and weekly cleaning and changing of bed linen and towels. Utilities are billed separately (gas, water, electricity). Medium and long-term rental available (from three months). No commission. Available from August 16th, 2022.



\* Area of the unit according to the Civil Code. The area consists of the sum total area of the entire unit bounded by perimeter walls.