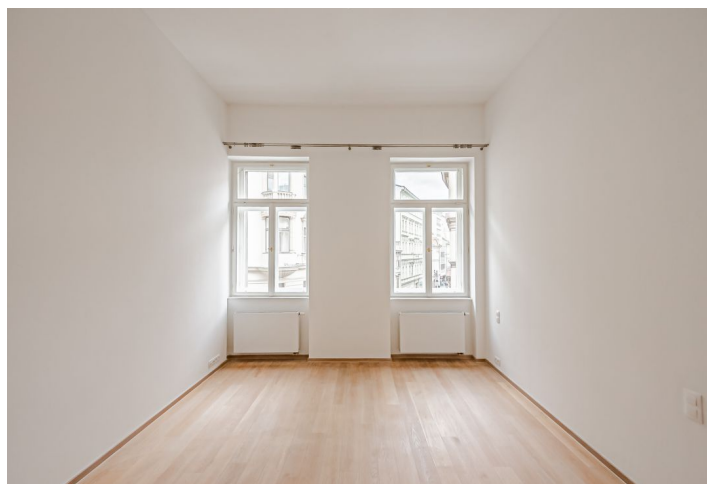




## Apartment Two-bedroom (3+kk)

€ 1 902 | CZK 47 000

102 m², Prague 1, Nové Město, Jungmannova





## Apartment Two-bedroom (3+kk)

€ 1 902 | CZK 47 000

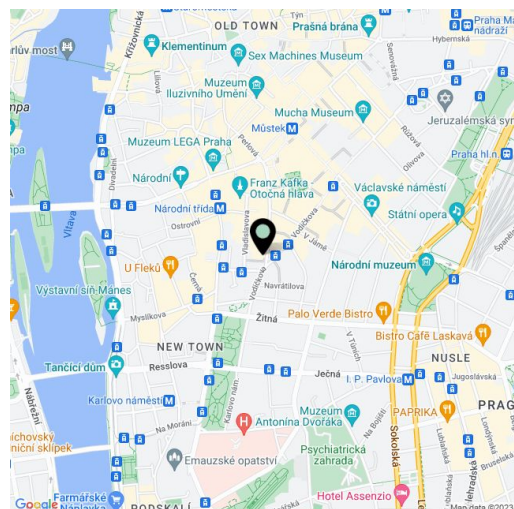
102 m², Prague 1, Nové Město, Jungmannova

Total area	124 m²
Floor area*	102 m²
Terrace	22 m²
Parking	-
Cellar	-
Service price	Deposit for common building charges and water CZK 6,800/month. Electricity will be transferred to the tenant.
PENB	G
Reference number	27614
Available from	Immediately

Benefiting from a prime central location and a 22 sq. m. courtyard terrace, this 2-bedroom 2-bathroom unfurnished apartment is situated on the second floor of a historic building that was completely rebuilt and modernized incl. a meticulously preserved original 1920s Art Deco facade and an internal passage connecting Jungmannova Street with Purkyňova and Vladislavova streets. The front facade in the style of German Expressionism was designed by architects Viktor Lampl and Otto Fuchs. This unique multifunctional building is located in the financial and commercial center of Prague moments from the new Quadrio shopping mall, with excellent access by public transport, a few minutes from the Národní třída metro station (line B) and tram line hub as well as the Můstek metro (lines A, B). A wide range of amenities and services available in close vicinity, quiet despite the central location.

The interior features a living room with a fully fitted open plan kitchen, a master bedroom with an en-suite bathroom (bathtub, bidet, toilet), a second bedroom, a family bathroom (walk-in shower, toilet), a walk-in closet with a utility area, and an entrance hall with access to the terrace in the courtyard of the building.

High standard materials and finishes, high ceilings, **oak floors**, tiles, heated bathroom floors, thermally insulated double-glazed windows, central gas heating, **granite kitchen worktop**, dishwasher, induction cooktop, microwave oven, **alarm**, video entry phone, chip entry to the building.



\* Area of the unit according to the Civil Code. The area consists of the sum total area of the entire unit bounded by perimeter walls.

**€ 1 902 | CZK 47 000**

102 m², Prague 1, Nové Město, Jungmannova



TABUĽKA MISTNOSTI 3.NP			
č.m.	NÁZEV MISTNOSTI	m <sup>2</sup>	m <sup>3</sup>
3.05	CHODBA	9,27	7,34
3.06	VRÁVNACI SCHODIŠTE		1,03
3.06	SCHODIŠTE	25,93	11,33
3.06	VRÁVNACI SCHODIŠTE*		2,34
3.07	ATLIER	64,97	
3.07	CHODBA		6,82
3.07	WC		2,89
3.07	SKLAD		4,29
3.07	ATLIER		30,47
3.07	ATLIER		12,54
3.08	ATLIER	72,58	7,06
3.08	CHODBA		4,85
3.08	KOLEJKA		4,81
3.08	SKLAD		4,19
3.08	ATLIER		32,94
3.08	ATLIER		18,66
3.08	KOLEJKA		7,18
3.09	BYT	104,52	
3.09	CHODBA		12,75
3.09	WC		3,91
3.09	KUCHĚŇ		8,55
3.09	OBRAŤOVÝ POKOJ		30,77
3.09	LOŽNICE		13,61
3.09	CHODBA		3,80
3.09	KOLEJKA		8,03
3.09	LOŽNICE		18,10
3.10	BYT	102,41	
3.10	CHODBA		11,81
3.10	LOŽNICE		14,69
3.10	KOLEJKA		3,87
3.10	TECHNICKÁ MISTNOST		1,98
3.10	OBRAŤOVÝ POKOJ		43,06
3.10	KUCHĚŇ		22,10
3.10	LOŽNICE		5,50
3.10	KOLEJKA		
3.11	SCHODIŠTE	27,54	
3.11	SCHODIŠTE		6,65
3.11	CHODBA		18,06
3.11	VRÁVNACI SCHODIŠTE*		2,84
3.12	CHODBA	6,30	
3.12	CHODBA		4,00
3.12	VRÁVNACI SCHODIŠTE*		2,30
3.12	CELEK (bez výťahového zariadenia o dĺžku)	413,53	
V1	VÝTAHOVÁ ŠACHTA	2,63	
V2	VÝTAHOVÁ ŠACHTA	24,88	
A03	ATRIUM 03		
A04	ATRIUM 04	22,09	
	TOTAL FLATS WITH ATTILANS		391,45
	TOTAL FLATS WITHOUT ATTILANS		344,48