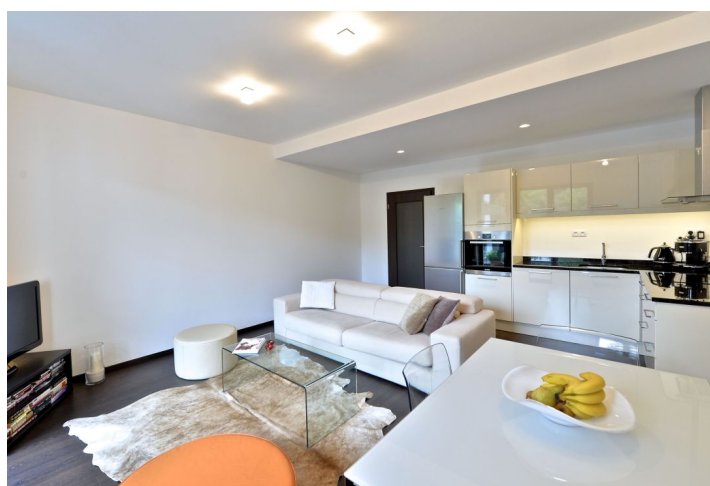




## Apartment One-bedroom (2+kk)

**Sold**

58 m², Prague 8, Libeň, V Mezihoří





## Apartment One-bedroom (2+kk)

**Sold**

58 m², Prague 8, Libeň, V Mezihoří

Total area	76 m²
Floor area*	58 m²
Terrace	18 m²
Parking	Parking space in underground garages included.
Garage	Yes
Cellar	-
Service price	1 100 CZK monthly
PENB	D
Reference number	28119

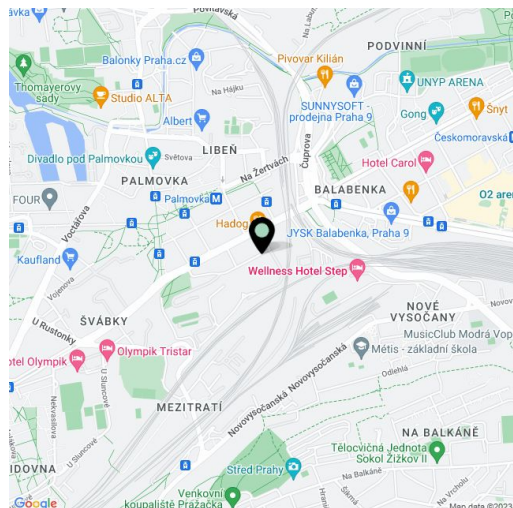
Completely furnished design apartment with two terraces, situated on the 4th floor of a modern residential complex with a lift, camera system, underground parking and a central atrium with landscaped greenery, playground, barbecue and water elements. Location with all amenities, on the edge of a park, just a 5 minutes' walk from a metro station and tram stops.

The practical layout consists of a living room with a kitchen and a **south-eastern terrace**, a bedroom with a 2nd terrace, a bathroom (with bathtub and washbasin), a separate toilet, **walk-in closet** and entrance hall.

The interior includes **wooden windows**, floating laminate floors (in the bathroom and patio tiles) and a fully equipped kitchen. **All the interior features shown in the photos are also part of the purchase price.** The apartment has **1 garage parking space**.

The fast-growing and increasingly popular location provides everything needed for comfortable city housing. Nearby is a kindergarten and elementary school, shops including the large **Harfa shopping center**, restaurants, cafes, theater and the **O2 arena** with many sports and cultural events. The **Palmovka** metro station (Line B) and tram stop are just a few minutes' walk away.

Interior 58 m², terraces 18 m² (10.2 m² and 7.39 m²).



\* Area of the unit according to the Civil Code. The area consists of the sum total area of the entire unit bounded by perimeter walls.



## Apartment One-bedroom (2+kk)

**Sold**

58 m², Prague 8, Libeň, V Mezihoří

