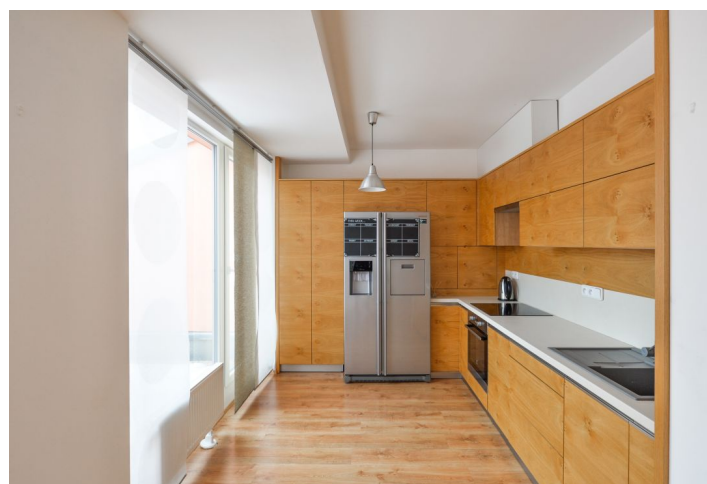




## Apartment Two-bedroom (3+kk)

Rented

100 m<sup>2</sup>, Praha-východ, Říčany, Na Fialce





# Apartment Two-bedroom (3+kk)

Rented

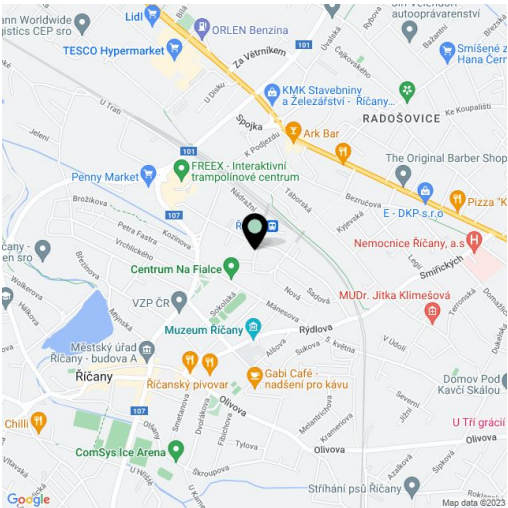
100 m², Praha-východ, Říčany, Na Fialce

Total area	122 m²
Floor area*	100 m²
Balcony	2 m²
Terrace	20 m²
Parking	-
Cellar	-
PENB	G
Reference number	28305
Available from	Immediately

This unfurnished 2-bedroom split-level flat with a terrace and a balcony is situated on the top third floor of a modern building with lift. Located in the peaceful residential area of Říčany, with good connection to Prague: 30 minutes by car or 20 minutes by train (three min. on foot, train departs every 15 min.). Říčany has complete infrastructure incl. kindergartens, the PED Academy primary school offering a bilingual program, and many opportunities for sports and relaxation. There is a wellness / leisure center, swimming pool, cinema, theater and a restaurant moments from the building.

The lower level includes two bedrooms - one with a small balcony, a fitted walk-in closet, shower bathroom with toilet, storage room, and entry hall. The upper level features living room with a fully fitted and equipped open kitchen and access to the terrace, and toilet with sink.

Green views, vinyl floors, tiles, security entry door, French windows, built-in wardrobe, central heating, washing machine, dishwasher, induction cooktop, American type fridge, WiFi. Easy parking on the street. Deposit for common building charges and utilities CZK 4000 per month. UNFURNISHED.



\* Area of the unit according to the Civil Code. The area consists of the sum total area of the entire unit bounded by perimeter walls.