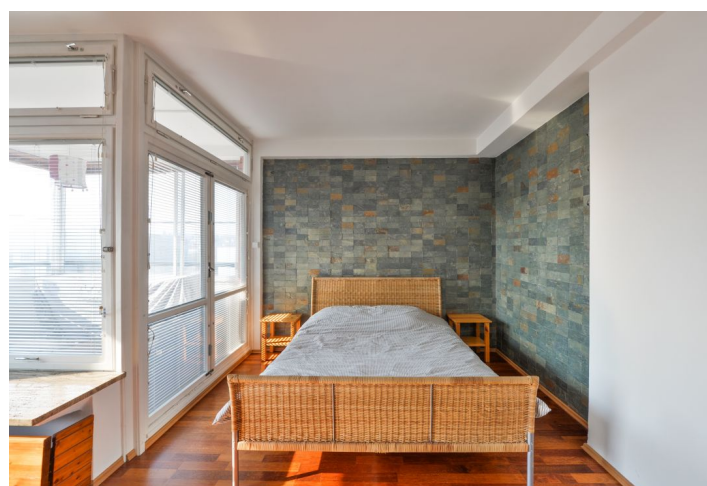




Apartment One-bedroom (2+kk)

Rented

52 m², Prague 6, Dejvice, Na Kocínce





Apartment One-bedroom (2+kk)

Rented

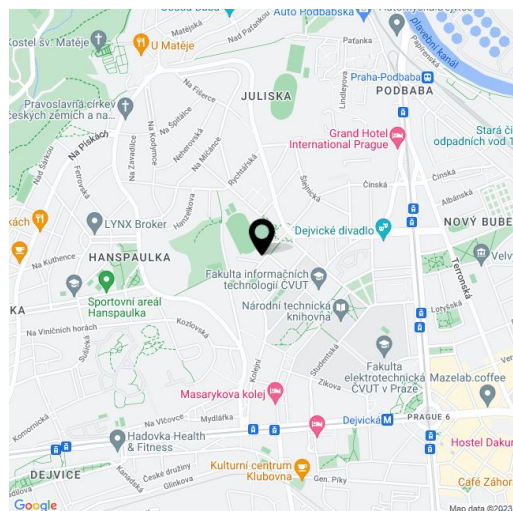
52 m², Prague 6, Dejvice, Na Kocínce

Total area	56 m²
Floor area*	52 m²
Loggia	4 m²
Parking	-
Cellar	-
Service price	Deposit for building charges, water and heating CZK 3,731/month. Gas and electricity - transfer to the tenant.
PENB	G
Reference number	32193
Available from	Immediately

Benefiting from excellent panoramic views of Prague, this fully furnished, move-in ready apartment with an enclosed glassed balcony is on the 8th floor of a well-maintained modern building with an elevator. Located in the attractive Dejvice residential area within walking distance of the Dejvická metro station, just steps from the Czech Technical University campus, within easy reach of full amenities and Stromovka Park, and convenient to the airport and numerous international schools. Steps from the building is a bus stop with connections to the Hradčanská metro station (7 min.).

The sunny interior includes a living room with a fully fitted open plan kitchen, one bedroom with a study area and access to the **enclosed balcony**, a bathroom with a bathtub, a separate toilet, a fitted **walk-in closet**, a utility room, and an entrance hall with built-in wardrobes. The apartment faces southwest.

High quality materials on the kitchen counter, window sills, and floor - **granite and marble, hardwood parquet floors**, tiles, security entry door, large windows, blinds, insect nets, gas boiler, AEG washer and dishwasher, Liebherr fridge/freezer, Miele oven, microwave oven, TV, satellite reception, UPC cable. Possible to rent unfurnished.



* Area of the unit according to the Civil Code. The area consists of the sum total area of the entire unit bounded by perimeter walls.