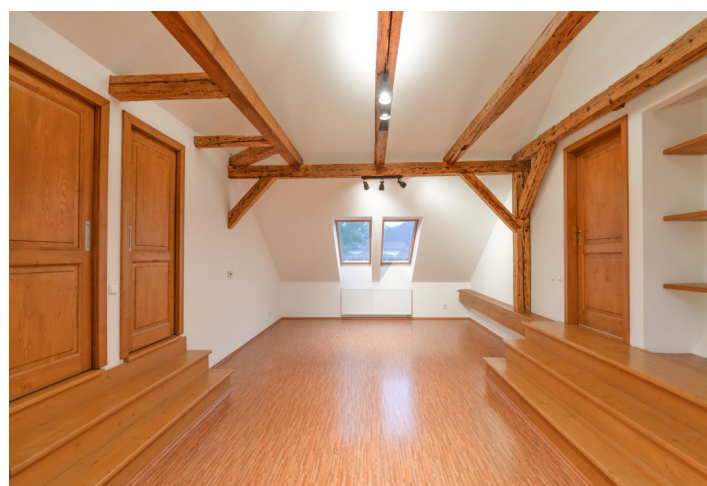
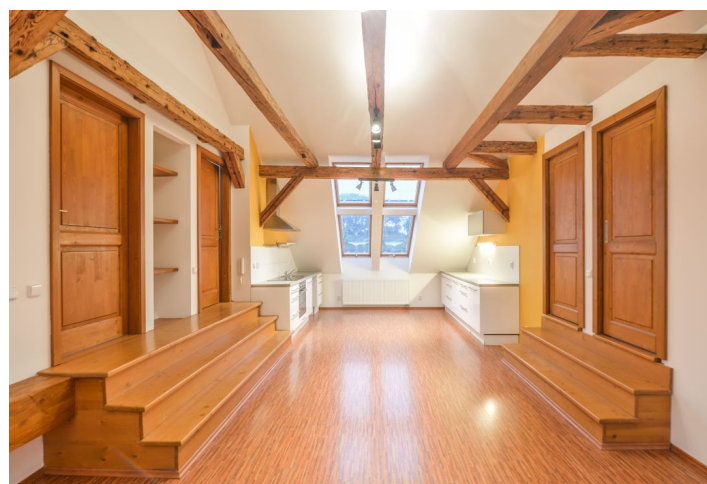




Apartment Four-bedroom (5+kk)

Rented

128 m², Praha-východ, Veleň, Na Návsí





Apartment Four-bedroom (5+kk)

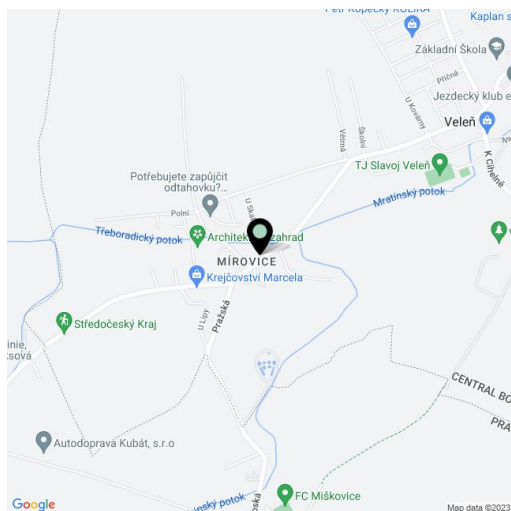
Rented128 m², Praha-východ, Veleň, Na Návsi

Total area	128 m ²
Parking	Two courtyard parking spaces.
Cellar	-
PENB	G
Reference number	33502
Available from	Immediately

This is a spacious renovated 4-bedroom attic apartment with preserved original details, on the second top floor in a renovated residence from the 19th century, with a shared courtyard offering parking and a brick summerhouse with a barbecue spot. Located in the village of Veleň - Mírovice, 400 m from the edge of Prague, in a quiet green area with bus connections to Letňany metro station and the center of Prague, and an excellent access to the D10 highway (connection to Mladá Boleslav). There is a bus stop a few steps from the building, and it takes two/five minutes to drive to Lidl and Globus shopping centers. The location boasts numerous sports and relaxation opportunities incl. jogging and bike paths.

The interior features a spacious living room with a fully fitted open plan kitchen, a large bedroom, two smaller bedrooms, a bathroom including a bathtub and a toilet, and an entrance hall. There is a separate office / fourth bedroom and an additional toilet.

Green views, **wooden ceilings**, laminated floors, terracotta floor tiles, new windows, storage, independent gas heating, automatic gate. No lift. **Two parking spaces** in the courtyard are included. Deposit for service charges and utilities in the amount of CZK 4000/month is billed separately.



* Area of the unit according to the Civil Code. The area consists of the sum total area of the entire unit bounded by perimeter walls.