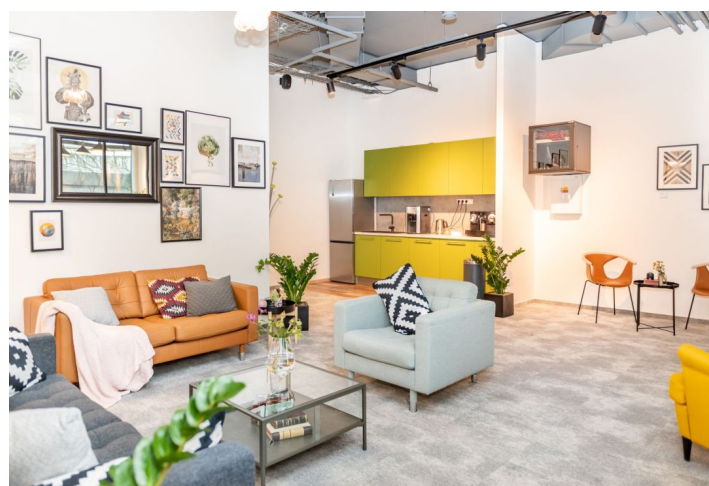




## Office building

2 880 m², Prague 5, Stodůlky, Bucharova

Rented





## Office building

2 880 m², Prague 5, Stodůlky, Bucharova

Rented

Total building area	2 880 m²
Tenant consumption	—
Parking	Yes
Parking service charges	—
Parking ratio	—
Certification	—
PENB	G
Reference number	35053

**Flexible offices with stunning views in the business and administrative area of Prague 5 - Nové Butovice offer the possibility of renting a separate work desk as well as tailor-made corporate space.**

The serviced offices provide **fully-equipped private offices** that are move-in ready, **corporate premises** with custom branding tailored to the tenant's needs, as well as coworking facilities in the form of **hot desks**. Tenants can use the fully equipped conference center on the ground floor of the building, a lounge and common areas, equipped kitchenette with snacks, and other services.

The offices are spread out over four floors of a building that is part of a complex of four modern office buildings. The complex is located in the middle of maintained green areas with park relaxation zones and so the offices have beautiful views of the greenery.

### Location:

The building is easily accessible by car and public transport. It is located right next to the **Nové Butovice metro station (line B)**. Very good access to the Prague Ring Road and D5 highway, and the Vaclav Havel International Airport is 15 minutes away. There is a shopping gallery in the vicinity and all public amenities with shops, restaurants, and cafes.

### Shared offices facilities and services:

Daily reception  
 Equipped private offices  
 Daily office  
 Fully equipped conference center on the ground floor  
 Equipped kitchen  
 Copy center  
 High-speed Wi-Fi

### Equipment and building standards:

Central reception  
 24-hour security service  
 High-speed elevators  
 Smart card access  
 Raised floors  
 Sprinklers  
 Openable windows  
 Parking in the underground garage  
 Bicycle parking including showers  
 Car wash and electric car charging station  
 Greenery with relaxation zones within the complex  
 Shopping gallery, bistro, restaurants, and cafes within the complex  
 Rohlik Point cooled food dispenser



Office building

2 880 m², Prague 5, Stodůlky, Bucharova

Rented

Total building area	2 880 m²
Tenant consumption	—
Parking	Yes
Parking service charges	—
Parking ratio	—
Certification	—
PENB	G
Reference number	35053

Laundry services

Price list including services:

Coworking:

Hot desk ..... from CZK 575/day

Private offices:

Office for 2 people ..... from CZK 8,000/month

Office for 4 people ..... from CZK 16,000/month

Office for 8 people ..... from CZK 24,000/month

Corporate premises with own branding from EUR 15,5/m².

Meeting rooms and event space rental from CZK 575/hour.

Lease and service charges listed without VAT. Lessee pays no commission.





## Office building

2 880 m<sup>2</sup>, Prague 5, Stodůlky, Bucharova

Rented

