



## Apartment Three-bedroom (4+1)

**Sold**

150 m<sup>2</sup>, Prague 1, Staré Město, Dušní





## Apartment Three-bedroom (4+1)

**Sold**150 m<sup>2</sup>, Prague 1, Staré Město, Dušní

Total area	150 m <sup>2</sup>
Parking	-
Cellar	Yes
Service price	5 990 CZK monthly
PENB	G
Reference number	35384

This elegant southwest-facing apartment with a balcony and large rooms is located on the 1st floor of a completely renovated corner apartment building with a new elevator. An attractive location opposite the U Salvátora Church, literally a few steps from Old Town Square and Pařížská Street and within walking distance of the Vltava embankment.

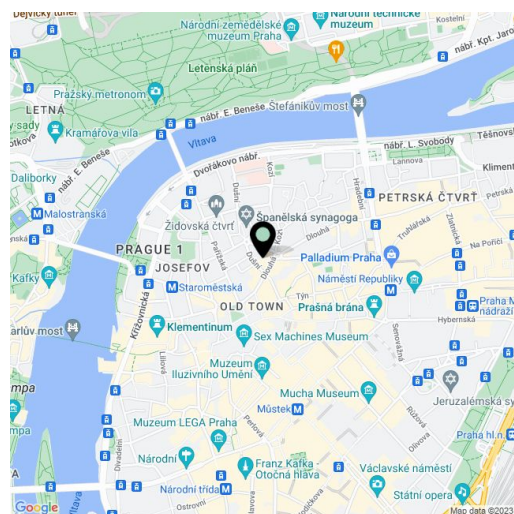
The bright and airy interior with high ceilings is divided into a living room with a **fireplace**, an adjoining dining room with an open plan kitchen, a master bedroom with an en-suite bathroom (solitary bathtub, sink, toilet) and **courtyard balcony**, 2 bedrooms (with windows towards the street), a central bathroom (**tropical rain shower**, sink), a guest toilet, a closet, and a large entrance hall.

In the superb interior, there are a number of preserved original architectural elements or replicas thereof: herringbone pattern **parquet floors**, large **casement windows**, double doors with glass panels, or a **stone-lined fireplace**. The bathrooms are equipped with quality sanitary ware. Security entrance doors. Heating is by a Buderus gas boiler. The apartment comes with a **cellar**.

The neighborhood combines wide boulevards and winding streets, world-class boutiques and Czech designer shops, refined restaurants and cozy pubs, bars and cafes, as well as cultural and spiritual institutions. Located in the very heart of Prague, where everything you need is within a short walk or short ride by public transport. Metro stations (lines A and B) and tram stops are located near the building.

Interior 150 m<sup>2</sup>.

In addition to regular property viewings, we also offer real-time video viewings via WhatsApp, FaceTime, Messenger, Skype, and other apps.



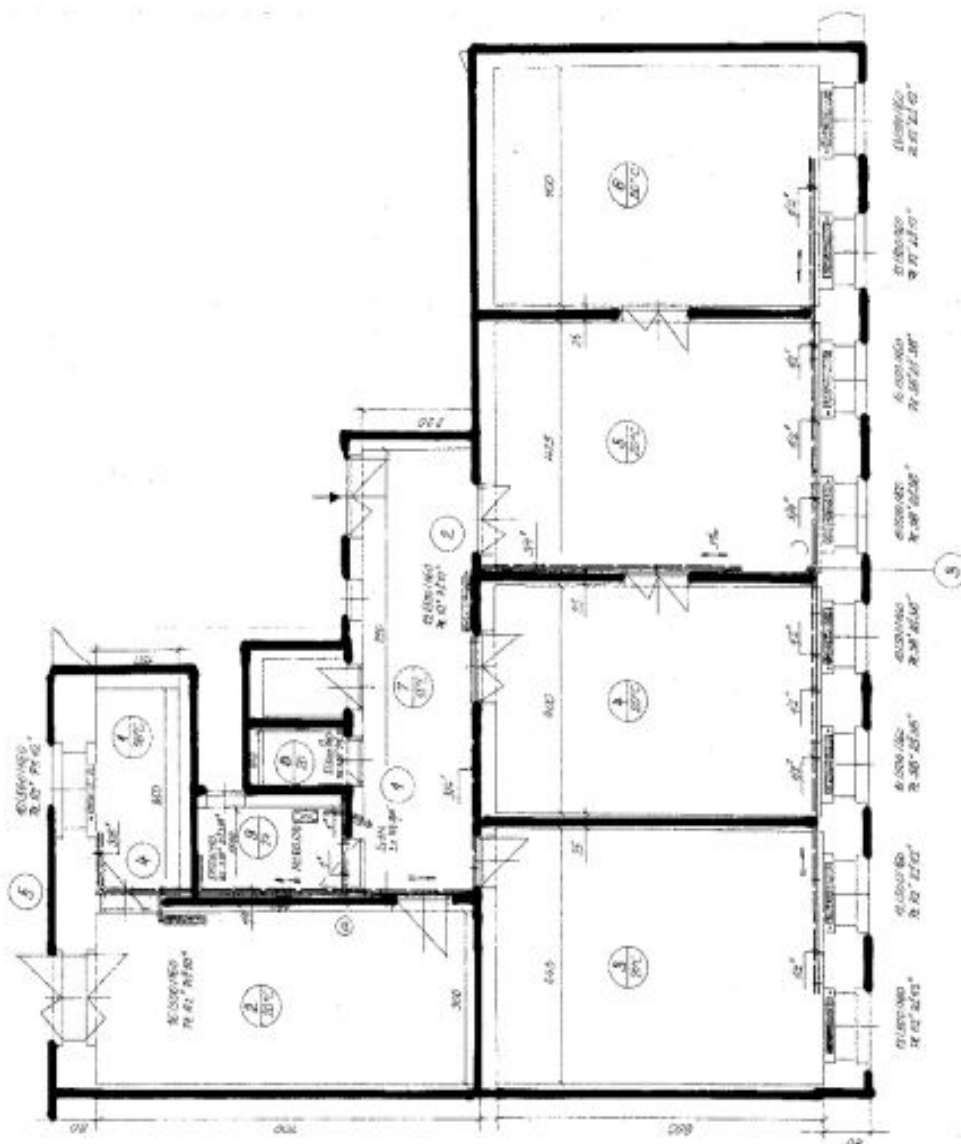
\* Area of the unit according to the Civil Code. The area consists of the sum total area of the entire unit bounded by perimeter walls.



## Apartment Three-bedroom (4+1)

150 m<sup>2</sup>, Prague 1, Staré Město, Dušní

Sold



PŮDORYS