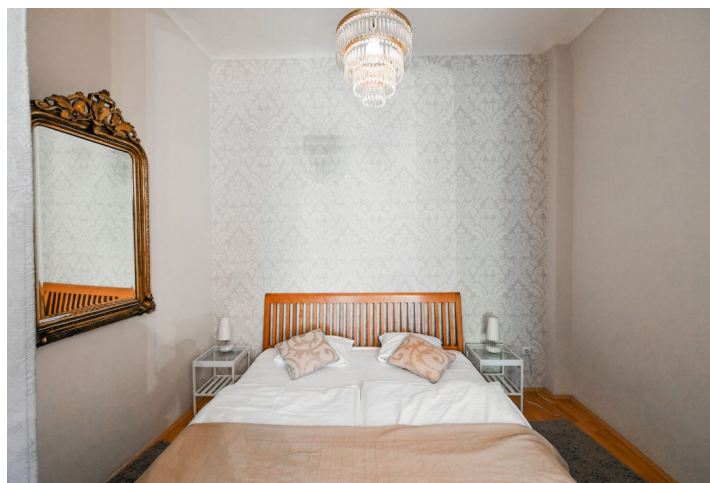




Apartment Two-bedroom (3+kk)

Rented

74 m², Prague 1, Staré Město, Rybná





Apartment Two-bedroom (3+kk)

Rented

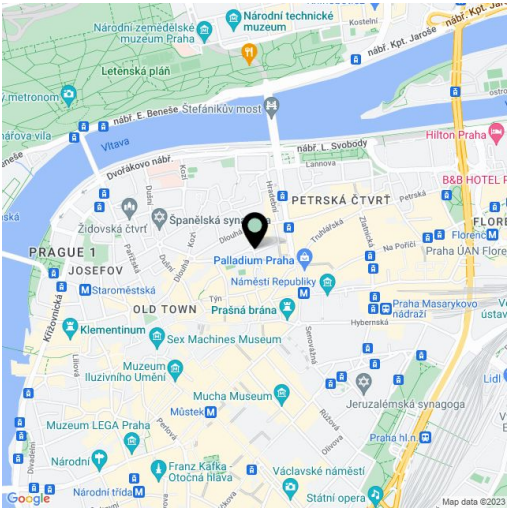
74 m², Prague 1, Staré Město, Rybná

Total area	74 m²
Parking	-
Cellar	-
Service price	Monthly deposit for services and utilities in the amount of CZK 6,000 is billed separately.
PENB	G
Reference number	38919
Available from	01.09.2024

This renovated, completely furnished apartment is situated on the second floor of a well-maintained traditional corner building with no elevator. Conveniently located in the historic and cultural center of Prague, just a few steps from the Náměstí Republiky metro station, tram stops, and the Palladium and Kotva shopping centers, a few minutes' walk from Old Town and Wenceslas squares. There is a multipurpose sports complex near the building, and the Vltava embankment as well as Letná Park are within walking distance.

The interior features a living room with a dining area and a fully fitted open plan kitchen, a master bedroom with a fitted **walk-in closet**/storage room, a small study, a bathroom including a bathtub and toilet, and an entrance hall.

Hardwood parquet floors, tiles, two sofas, central heating, WiFi (included).



* Area of the unit according to the Civil Code. The area consists of the sum total area of the entire unit bounded by perimeter walls.