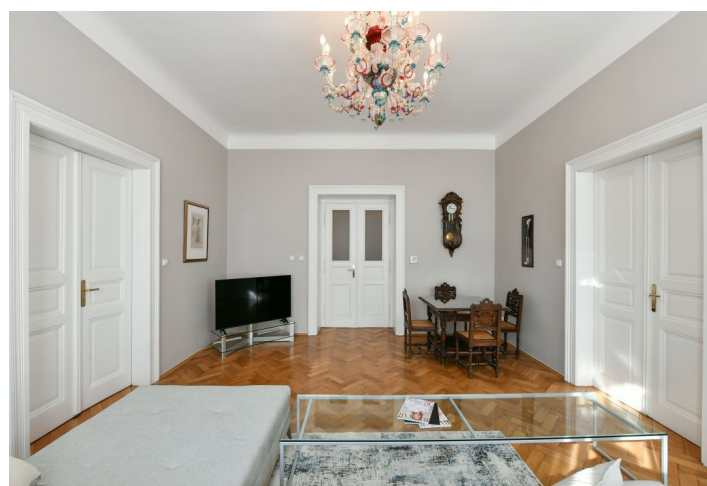
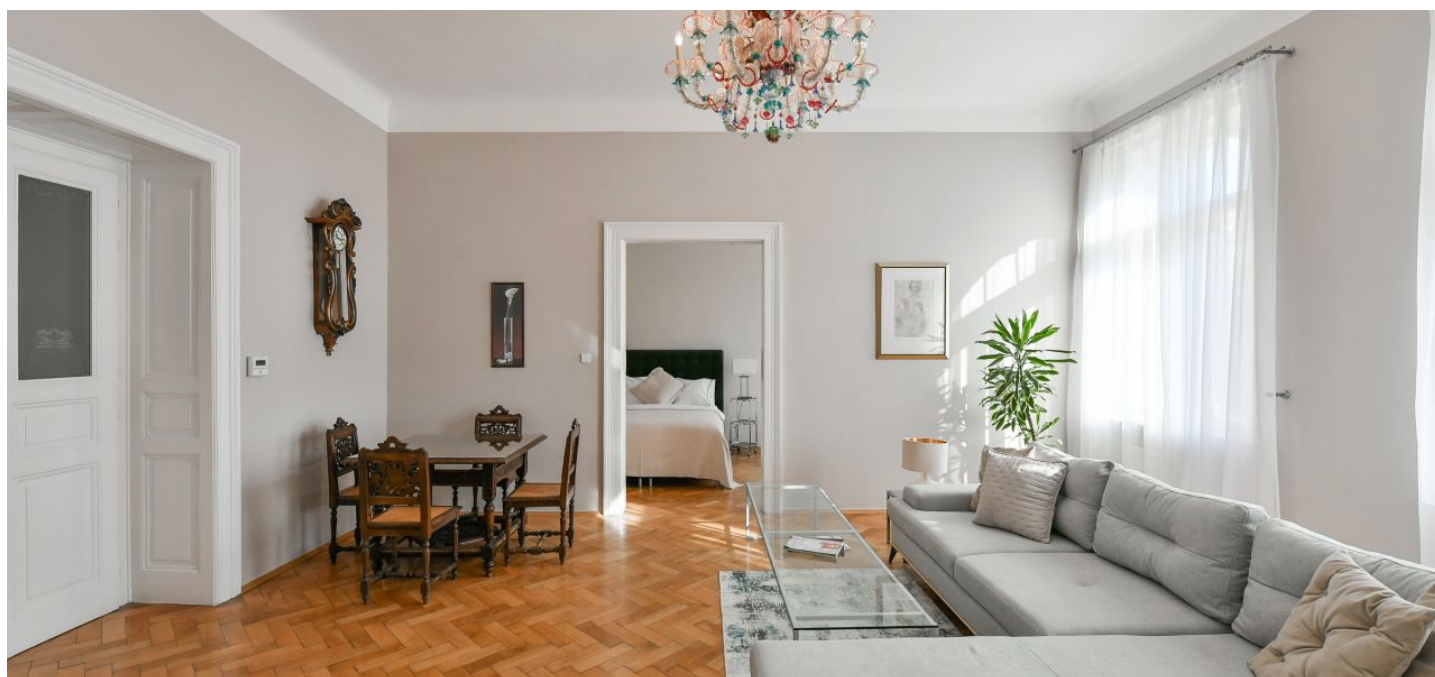




## Apartment Two-bedroom (3+1)

**Sold**

120 m<sup>2</sup>, Prague 1, Staré Město, Veleslavínova





## Apartment Two-bedroom (3+1)

**Sold**120 m<sup>2</sup>, Prague 1, Staré Město, Veleslavínova

Total area	120 m <sup>2</sup>
Parking	-
Cellar	-
PENB	E
Reference number	40255

This spacious, bright apartment with high ceilings and a classic layout is part of a perfectly maintained Art Nouveau building with an elevator and 24-hour concierge services. An attractive location in the middle of the historic center of the city near Old Town Square.

The layout of the apartment on the 4th floor consists of a walk-through living room, 2 bedrooms (accessible from the living room and a large central hall), a separate kitchen with a window towards the courtyard, a pantry, a bathroom, a toilet, and a closet.

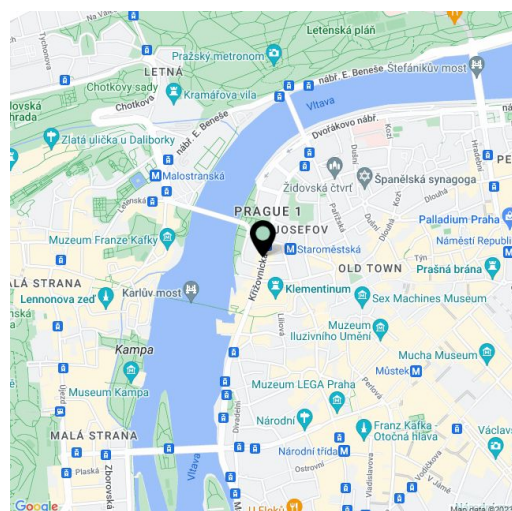
In the interior, illuminated by large casement windows, there are original refurbished **parquet floors**, and the door panels are decorated with **etched glass**. Security is ensured by an alarm and a videophone. The completely renovated building has a richly decorated entrance hall and a new elevator. It is possible to arrange a **long-term lease of a parking space** in the nearby underground garages.

The corner building is only a few steps away from the Staroměstská metro station and tram stop. It is close to the **former Jewish Quarter**, luxurious **Pařížská Street**, and many monuments, such as **Charles Bridge**, Rudolfinum, Klementinum, or the Old Town Astronomical Clock. There are many restaurants and cafés in the immediate vicinity, as well as theaters, university faculties, and a dance conservatory, as well as a library, a grocery store, and a post office.

Interior approx 120 m<sup>2</sup> (the exact area will be amended after the apartment is measured).

The property is now rented.

In addition to regular property viewings, we also offer real-time video viewings via WhatsApp, FaceTime, Messenger, Skype, and other apps.



\* Area of the unit according to the Civil Code. The area consists of the sum total area of the entire unit bounded by perimeter walls.



## Apartment Two-bedroom (3+1)

120 m², Prague 1, Staré Město, Veleslavínova

**Sold**

