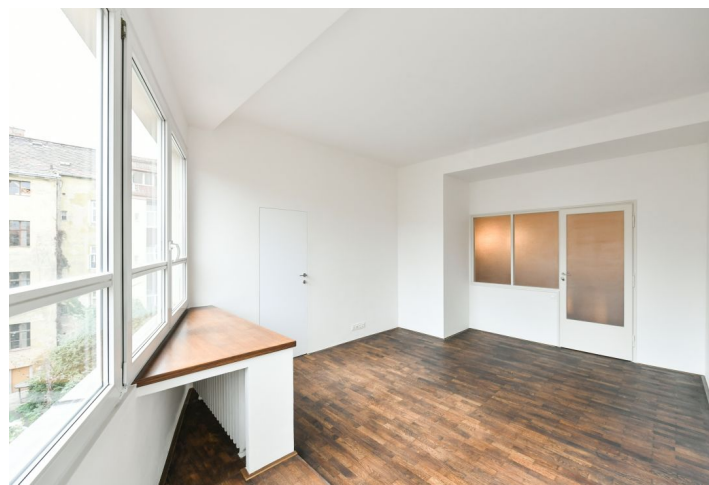




Apartment Three-bedroom (4+kk)

Rented

148.5 m², Prague 7, Holešovice, Milady Horákové





Apartment Three-bedroom (4+kk)

Rented

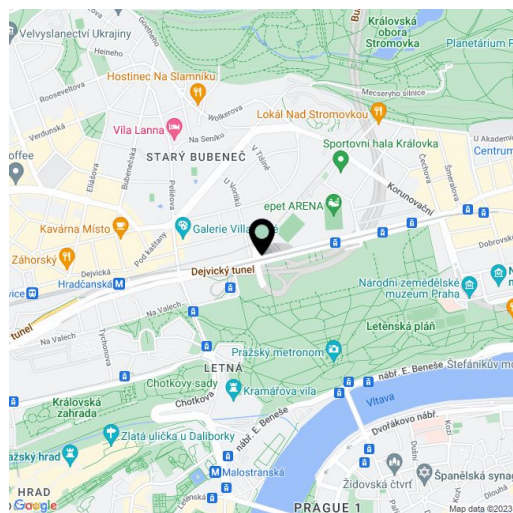
148.5 m², Prague 7, Holešovice, Milady Horákové

Total area	150 m²
Floor area*	149 m²
Balcony	2 m²
Parking	Garage parking.
Garage	Yes
Cellar	Yes
Service price	Monthly deposit for services, water, and heating: CZK 9,000. Electricity is billed separately (transferred to the tenant).
PENB	E
Reference number	40526
Available from	Immediately

This fully refurbished split-level apartment with a balcony is situated on the second floor of a completely renovated Functionalist residential building from 1938 with an elevator, within walking distance of the Letná and Stromovka parks. Set just steps from Letenské Square, in a sought-after residential location with a fine selection of cafes, restaurants, bistros, shopping, and cultural venues, with very quick access to the city center, a few tram stops from the Hradčanská and Vltavská metro stations. Conveniently located for the airport and Prague 6 international schools.

The interior features, on the upper level, a **gallery**, a bedroom with a large windowed **walk-in closet**, and a bathroom (walk-in shower, toilet). The lower floor offers a spacious living room with a fully fitted open plan kitchen, a study area and **balcony** access, two bedrooms, a bathroom (walk-in shower, bathtub), a separate toilet, a **walk-in closet**, a laundry room, a storage room, and an entrance hall.

Preserved original details, renovated original **hardwood floors**, tiles, central heating, underfloor heating in the bathrooms, dishwasher, induction cooktop, and microwave oven. An on-site underground **garage parking** space is available.



* Area of the unit according to the Civil Code. The area consists of the sum total area of the entire unit bounded by perimeter walls.