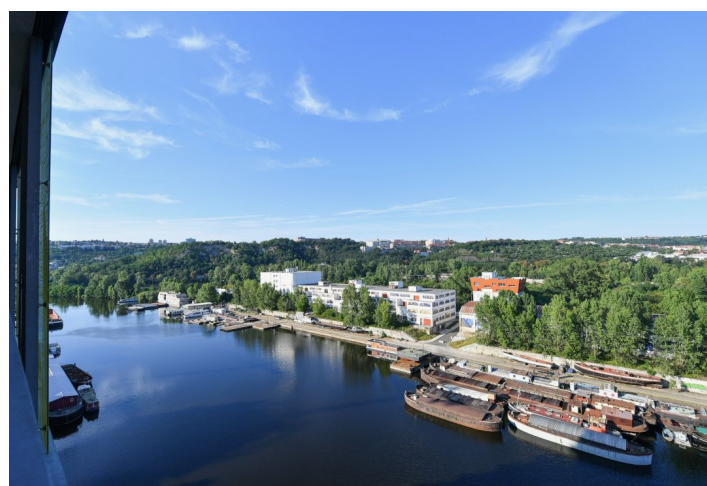
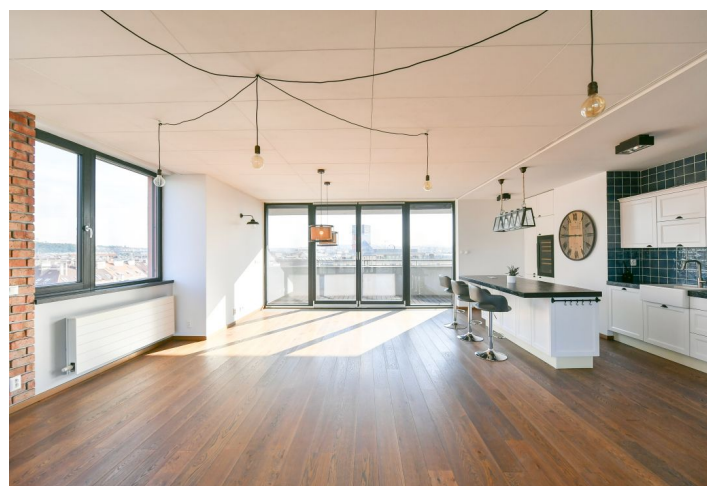
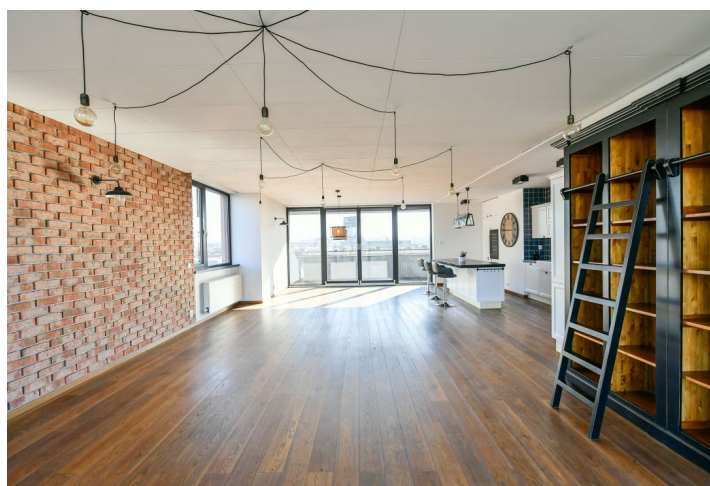
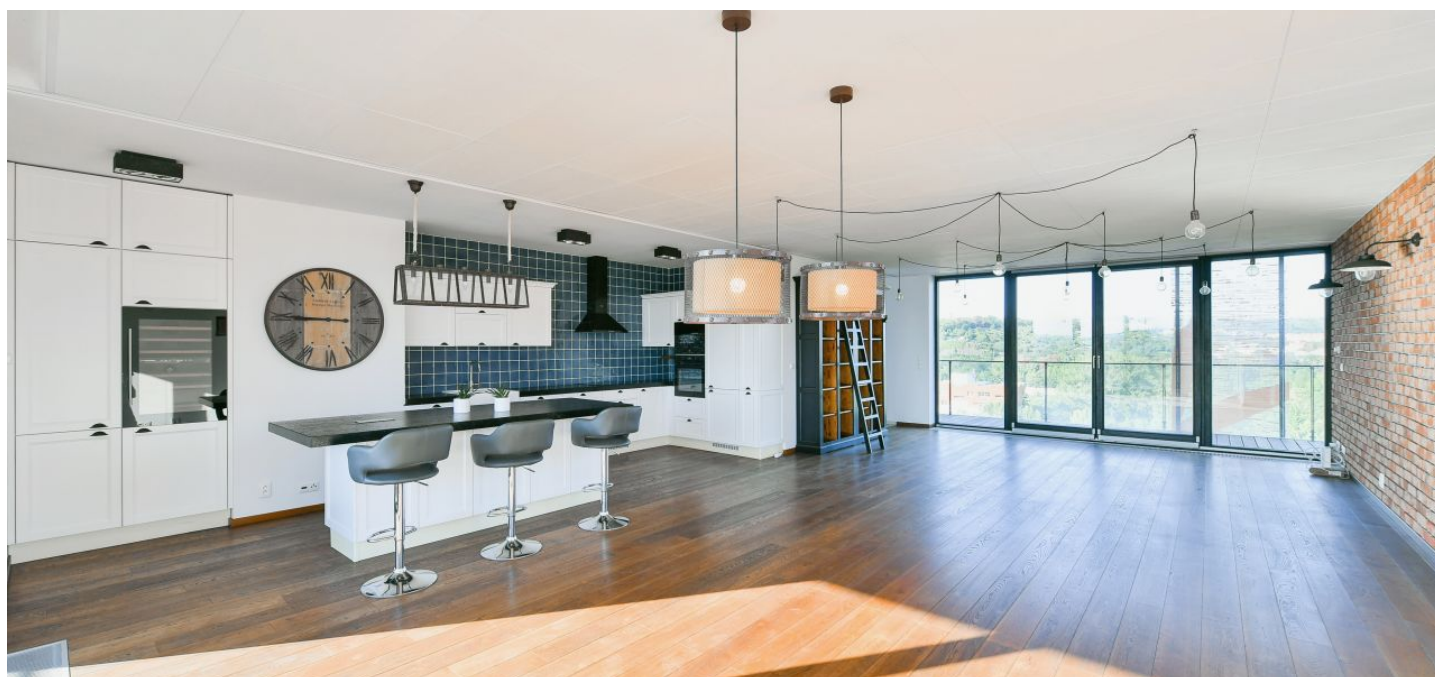




## Apartment Three-bedroom (4+kk)

Rented

192 m<sup>2</sup>, Prague 7, Holešovice, V Přístavu





## Apartment Three-bedroom (4+kk)

**Rented**

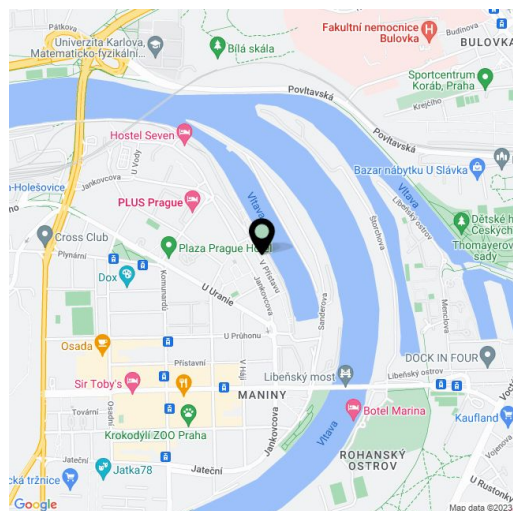
192 m², Prague 7, Holešovice, V Přístavu

Total area	229 m²
Floor area*	192 m²
Terrace	37 m²
Parking	Two garage parking spaces.
Garage	Yes
Cellar	Yes
Service price	Monthly deposit for service charges, water, and heating: CZK 15,000. Electricity is billed separately.
PENB	C
Reference number	42038
Available from	Immediately

Enjoying 2 terraces and beautiful views of Prague, this high standard unfurnished 3-bedroom 2-bathroom penthouse with a sauna is situated on the 9th topmost floor of the PRAGUE MARINA residential project with a reception, security cameras, and underground parking. Located right on the Vltava riverbank in Holešovice, Prague 7, within easy reach of full amenities, incl. stylish restaurants, bistros and cafes, with very good connections to the city center. The Nádraží Holešovice, Palmovka, and Vltavská metro stations are a few tram stops away, and the DOX Center for Contemporary Art and the La Fabrika theater are close-by.

The interior features a living room with a fully fitted open plan kitchen, an east-facing **terrace**, a west-facing **terrace** with a **sauna**, an adjacent **office** area, a master bedroom with a fitted **walk-in closet** and en-suite bathroom ( **massage bath**, walk-in shower, toilet), two bedrooms with built-in wardrobes, and a family bathroom (bathtub, walk-in shower, toilet). There is an additional separate toilet, a utility room, a hall with a large built-in wardrobe, plus an entrance hall with storage space.

**Hardwood floors**, tiles, ample storage space, floor-to-ceiling windows, automatic exterior blinds, insect nets, dishwasher, microwave oven, wine fridge, 7.7 sq. m. **cellar storage unit**, wheelchair accessible. **Two garage parking spaces** are included.



\* Size of the unit according to the Housing Act.  
The area consists of the sum total of the internal area of every room.