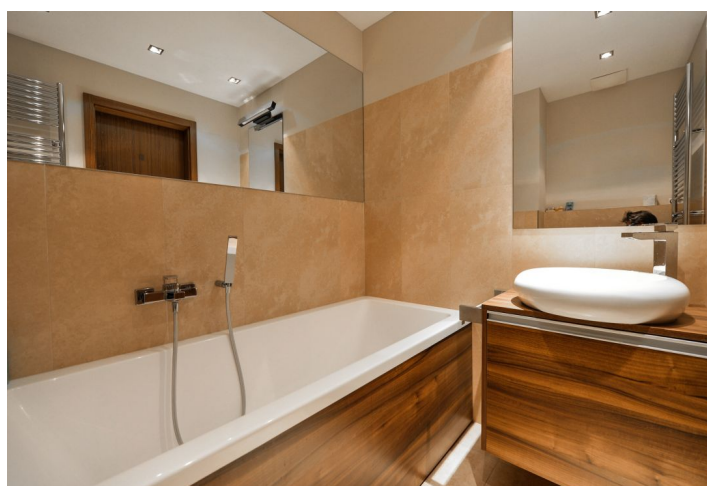
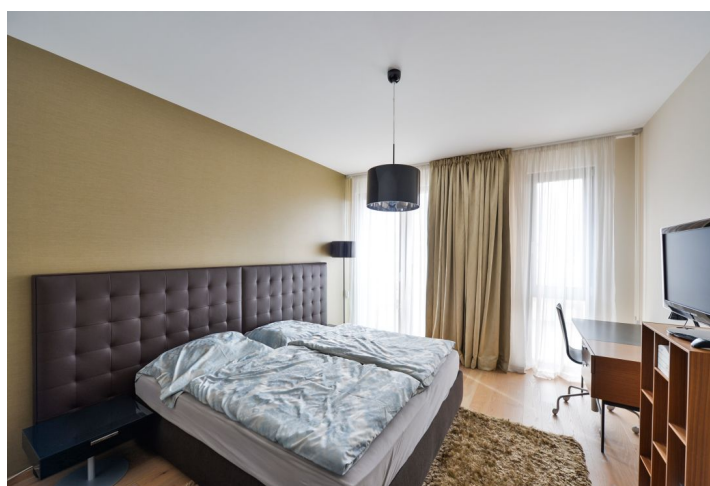




## Apartment One-bedroom (2+kk)

Sold

56.3 m<sup>2</sup>, Prague 8, Libeň, Voctářova





## Apartment One-bedroom (2+kk)

**Sold**

56.3 m², Prague 8, Libeň, Voctářova

Total area	62 m²
Floor area*	56 m²
Balcony	5 m²
Parking	Garage parking space in the building.
Garage	Yes
Cellar	-
PENB	C
Reference number	42658

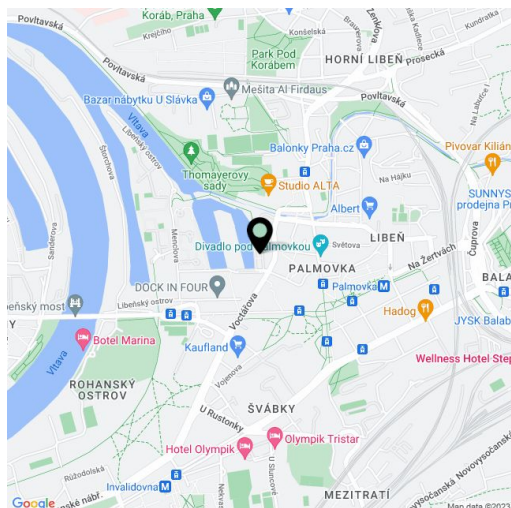
This modern, fully furnished apartment with a balcony with soothing views of the water is located on the 2nd floor of an apartment building in the DOCK residential complex located between Karlín and Libeň near Thomayerovy Sady Garden. The residence has an elevator, a reception, and an underground garage, where the apartment has a parking space.

The layout divides the apartment into a living room with a kitchen and access to the **west-facing balcony**, 1 bedroom, a bathroom (with a bath and toilet), a closet/utility room, and a hallway.

**Quality facilities** include **wooden floors**, a security entrance door, a videophone, and access to the building via a chip. Central heating. The purchase price includes **1 garage space and a second can be purchased**. The price also includes all interior equipment.

Within easy reach are complete civic amenities: supermarkets and other shops, restaurants, cafes, clinics, theaters, galleries, and sports grounds ( **golf course or tennis courts**). A short walk from the building is a **bike path** along the Vltava River, via which you can reach safely the city center. Transport connections are provided by the metro and numerous tram lines.

Interior 56.3 m², balcony 5.38 m².



\* Area of the unit according to the Civil Code. The area consists of the sum total area of the entire unit bounded by perimeter walls.