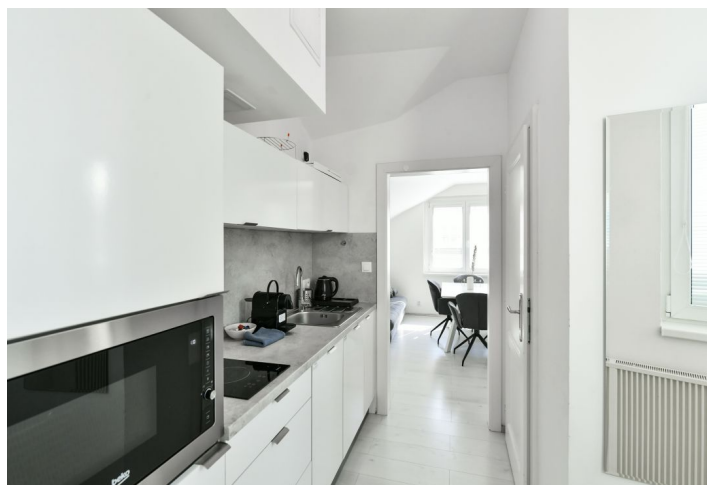
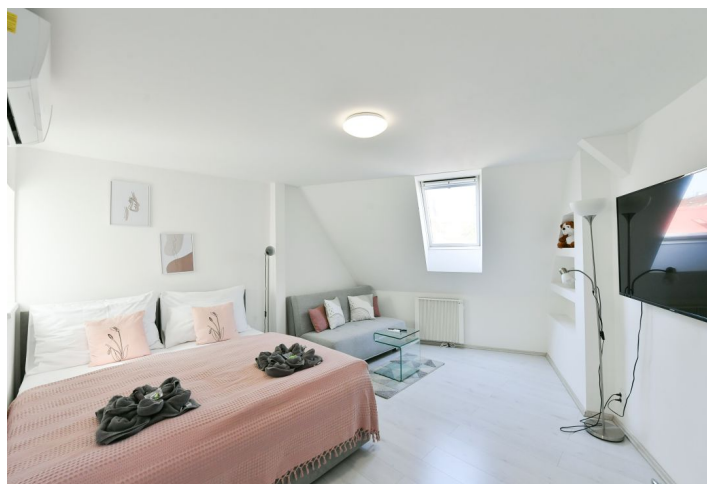
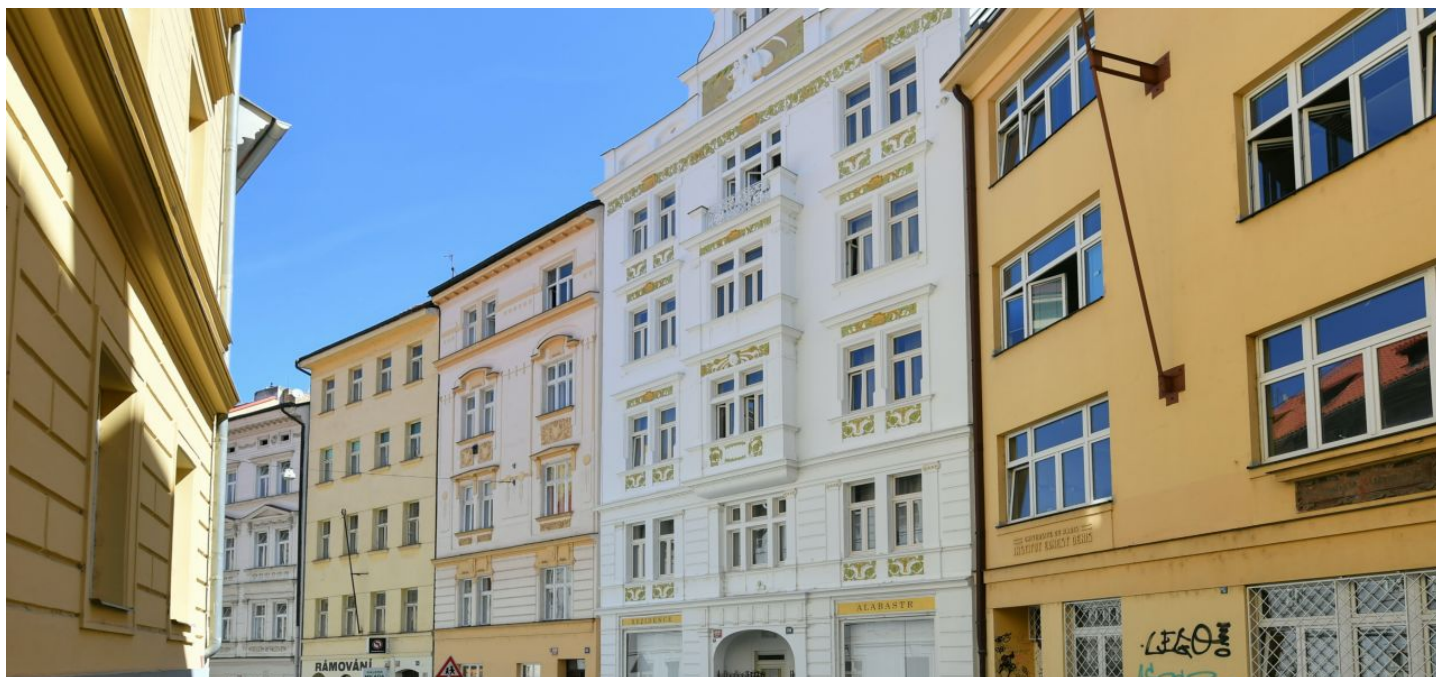




Apartment One-bedroom (2+kk)

€ 360 537 | CZK 8 990 000

55 m², Prague 1, Nové Město, Školská





Apartment One-bedroom (2+kk)

€ 360 537 | CZK 8 990 000

55 m², Prague 1, Nové Město, Školská

Total area	55 m²
Parking	-
Cellar	-
PENB	G
Reference number	43074

This air-conditioned, bright attic apartment with a small winter garden is part of an elegant apartment building with an ornate facade, located in the historic center of New Town, on a quiet one-way street near Wenceslas Square and Charles Square with a park.

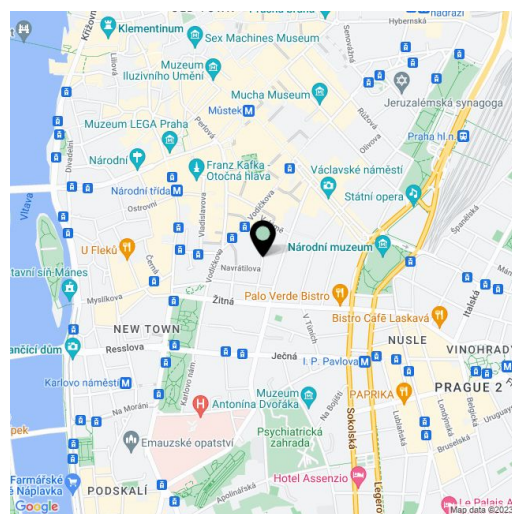
The area of the apartment on the 5th floor is divided into a living room with a dining area, a separate kitchen, 1 bedroom, a **conservatory**, a bathroom (shower, sink, toilet), and a closet.

Facilities include plastic windows and laminate floors. The **air-conditioning** ensures a comfortable temperature even on hot days. The kitchen is fully equipped. In 2019, the facade, common areas and **elevator** were refurbished, and the interior of the offered apartment unit was created in the same year.

The location stands out for its many restaurants, cafes, and clubs. The cinema of the **French Institute** and the **theaters** Řeznická, Komedie, Kalich, Ypsilon, or Studio Dva are nearby, as is the **National Museum**. The place is easily accessible by all metro lines and trams, and the Main Railway Station is also within walking distance.

Floor area 55.2 m².

The apartment is rented until 31.3.2025 for CZK 29,000.



* Area of the unit according to the Civil Code. The area consists of the sum total area of the entire unit bounded by perimeter walls.