



Apartment One-bedroom (2+kk)

€ 406 961 | CZK 10 056 000

61.12 m², Prague 3, Žižkov, Biskupcova





Apartment One-bedroom (2+kk)

€ 406 961 | CZK 10 056 000

61.12 m², Prague 3, Žižkov, Biskupcova

Total area	66 m²
Floor area*	61 m²
Loggia	5 m²
Parking	-
Cellar	-
PENB	G
Reference number	43621

A completely new apartment with a loggia, finished to a high standard, is part of a residential project involving the complete revitalization of a corner apartment building from the early 20th century. The location of upper Žižkov offers proximity to both greenery and the city center, and thanks to dynamic development, the range of services in the area is also expanding. Completion is scheduled by the end of 2024.

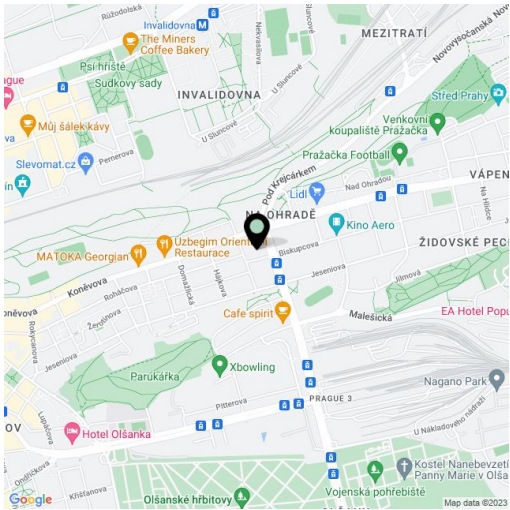
The layout of the apartment on the 6th floor comprises a living room with kitchen and a **west-facing loggia**, 1 bedroom, a bathroom and entrance hall.

High-standard features include **four-layered oak floors** by Boen, large-format tiles in bathrooms by La Futura, premium sanitary ware from Ideal Standard, Kaldewei, and Hüppe brands, entrance and interior doors by **Sapeli**, **underfloor heating and air conditioning**. Heating will be provided by De Dietrich gas condensing boiler. A significant added value comes from **large format windows** with anthracite **plastic-aluminum frames** and external blinds. The building will have a new facade, renovated common areas, and an **elevator** serving the floors.

The project is situated on a side one-way street lined with **mature trees** in the vibrant area of upper Žižkov, near parks such as **Vítkov** and **Parukářka**. Another large park will be created alongside a new district in the former Žižkov freight station area. Due to the new residential development, the range of services in the vicinity will significantly expand. Currently, there are numerous locally-owned businesses in the area, with the popular **Aero art cinema** located almost beneath the residence's windows. Nearby are nurseries, elementary and high schools, as well as a sports complex with an **indoor pool and outdoor swimming pool**. Quick connections to the city center are provided by numerous tram lines, with a journey to Wenceslas Square taking just 15 minutes. Even faster access is available to Želivského or Palmovka metro stations.

Floor area 61.12 m², loggia 4.83 m².

For more information, please visit the project website www.biskupcova27.cz.



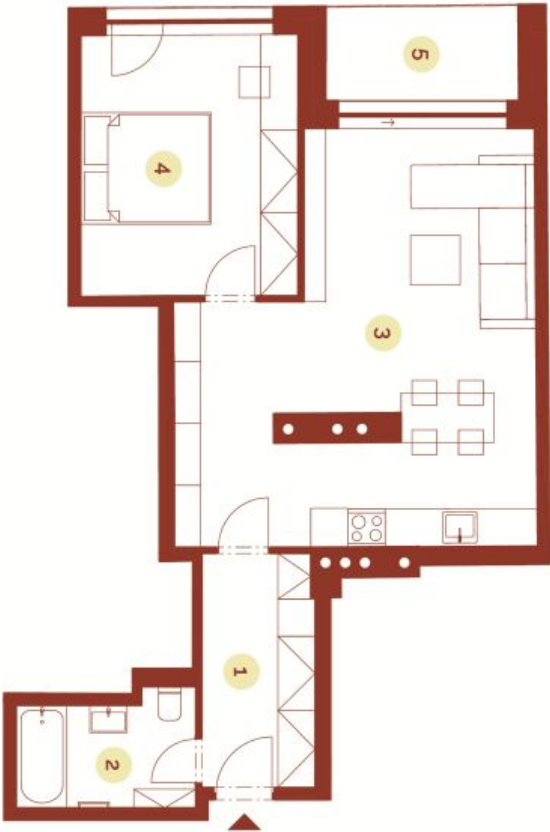
* Area of the unit according to the Civil Code. The area consists of the sum total area of the entire unit bounded by perimeter walls.



Apartment One-bedroom (2+kk)

€ 406 961 | CZK 10 056 000

61.12 m², Prague 3, Žižkov, Biskupcova



Rečkova

* Podlahová plocha bytu je vypočítána v souladu s Místním výtahem č. 386/2013 Sb. a tvoří ji podlahová plocha všech místností bytu včetně podlahové plochy všech solitních neoprávněných i neoprávněných konstatací vnitřní bytu. Dvoutřípový projekt Biskupcova 27 a1 vyjadřuje právo na změny. Vybavení zařízení (např. nábytek, kuchyňská linka apod.) mimo uvedené standardy není součástí dodávky a má pouze ilustrační charakter.

BISKUPCOVA
27

Byt 702
2+kk | 7. NP

1	Vstupní hala	6,84 m²
2	Koupelna	5,16 m²
3	Obývací pokoj s kuchyní	32,54 m²
4	Ložnice	14,75 m²
Užitná plocha		59,30 m²
Podlahová plocha		61,12 m²
5	Ložnice	4,83 m²
Celková plocha		65,95 m²

EXKLUZIVNÍ ZASTOUPENÍ
svoboda&williams | CHRISTIE'S
INTERNATIONAL REAL ESTATE

Na Zátorce 1, 160 00, Praha 6
+420 724 551 238
biskupcovaz7.cz

info@biskupcovaz7.cz

Svoboda & Williams s.r.o.

info@svoboda-williams.com

www.svoboda-williams.com

Prague

+420 257 328 281

+420 724 551 238

Brno

+420 543 250 711

+420 724 551 238

Bratislava

+421 948 939 938

PDF created

18. 05. 2024, 10:31