



Apartment One-bedroom (2+kk)

€ 444 193 | CZK 10 976 000

73.22 m², Prague 3, Žižkov, Biskupcova





Apartment One-bedroom (2+kk)

€ 444 193 | CZK 10 976 000

73.22 m², Prague 3, Žižkov, Biskupcova

Total area	83 m²
Floor area*	73 m²
Loggia	10 m²
Parking	-
Cellar	-
PENB	G
Reference number	43624

A completely new apartment with 2 loggias, finished to a high standard, is part of a residential project involving the complete revitalization of a corner apartment building from the early 20th century. The location of upper Žižkov offers proximity to both greenery and the city center, and thanks to dynamic development, the range of services in the area is also expanding. Completion is scheduled by the end of 2024.

The layout of the apartment on the 6th floor comprises a living room with kitchen and a **south-facing loggia**, 1 bedroom, a bathroom, a separate toilet, and entrance hall with access to **the second loggia**.

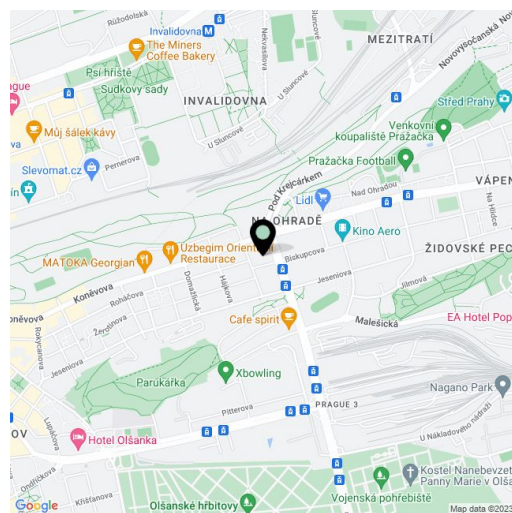
High-standard features include **four-layered oak floors** by Boen, large-format tiles in bathrooms by La Futura, premium sanitary ware from Ideal Standard, **Kaldewei**, and **Hüppe** brands, entrance and interior doors by **Sapeli**, **underfloor heating and air conditioning**. Heating will be provided by De Dietrich gas condensing boiler. A significant added value comes from **large format windows** with anthracite **plastic-aluminum frames** and external blinds. The building will have a new facade, renovated common areas, and an **elevator** serving the floors.

The project is situated on a side one-way street lined with **mature trees** in the **vibrant area** of upper Žižkov, near parks such as **Vítkov** and **Parukářka**. Another large park will be created alongside a new district in the former Žižkov freight station area. Due to the new residential development, the range of services in the vicinity will significantly expand. Currently, there are numerous locally-owned businesses in the area, with the popular **Aero art cinema** located almost beneath the residence's windows. Nearby are nurseries, elementary and **high schools**, as well as a sports complex with an **indoor pool and outdoor swimming pool**. Quick connections to the city center are provided by numerous tram lines, with a journey to Wenceslas Square taking just 15 minutes. Even faster access is available to Želivského or Palmovka metro stations.

Floor area 73.22 m², loggias 4.79 + 4.79 m².

For more information, please visit the project website www.biskupcova27.cz

* Area of the unit according to the Civil Code. The area consists of the sum total area of the entire unit bounded by perimeter walls.





Apartment One-bedroom (2+kk)

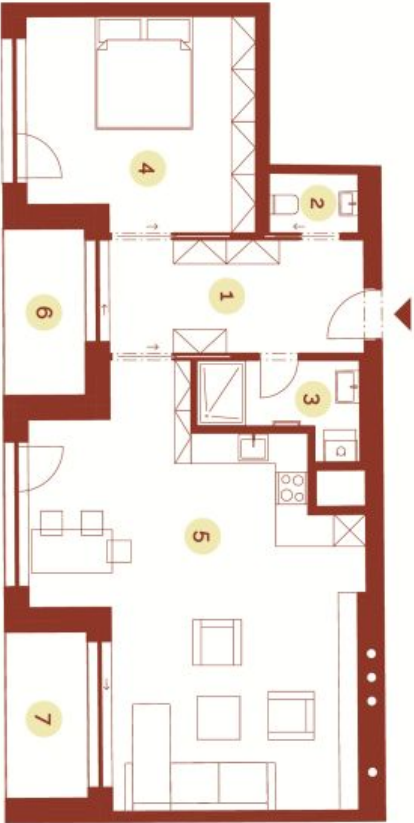
€ 444 193 | CZK 10 976 000

73.22 m², Prague 3, Žižkov, Biskupcova



* Podlažní plán bytu je vyznačen v souladu s Náleženým výšl. č. 386/2013 Sb. a kódu J. podlažní plocha všech místností bytu včetně podlažní plochy všech solitních nosných i nesolitních konstrukcí uvnitř bytu. Dvěkódy projezdu Biskupcova 27 a výrazuje právo na změny. Vyznačené zařízení (např. nábytek, kuchyňská linka apod.) mohou uvedené standardy není součástí dodávky a má pouze ilustrační charakter.

Biskupcova



BISKUPCOVA
27

Byt 704
2+kk | 7. NP

1	Vstupní hala	10.02 m²
2	WC	1.94 m²
3	Koupelna	4.48 m²
4	Ložnice	16.37 m²
5	Obývací pokoj s kuchyní	38.53 m²

Užitná plocha	71.33 m²
Podlahová plocha	73.22 m²

6	Lodžie	4.79 m²
7	Lodžie	4.79 m²

Celková plocha	82.80 m²
----------------	----------

EXKLUZIVNÍ ZASTOUPENÍ
svoboda&williams | CHRISTIE'S
INTERNATIONAL REAL ESTATE

Na Zátorce 1, 160 00, Praha 6
*420 724 551 238
biskupcovaz7.cz info@biskupcovaz7.cz