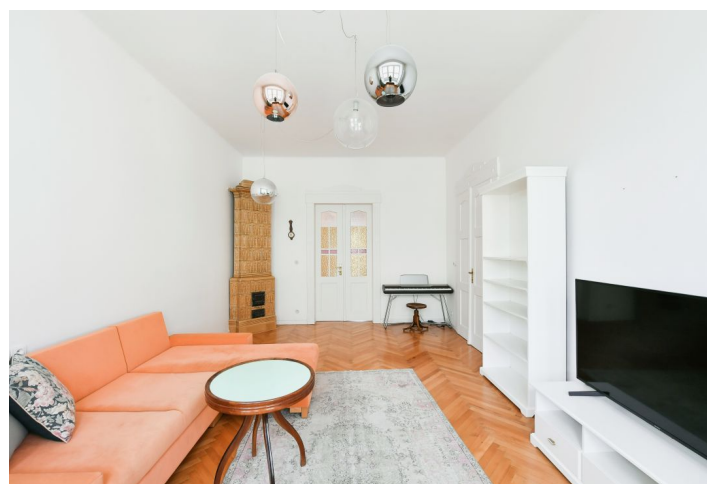




Apartment Two-bedroom (3+1)

Rented

115 m², Prague 6, Bubeneč, Čs. armády





Apartment Two-bedroom (3+1)

Rented

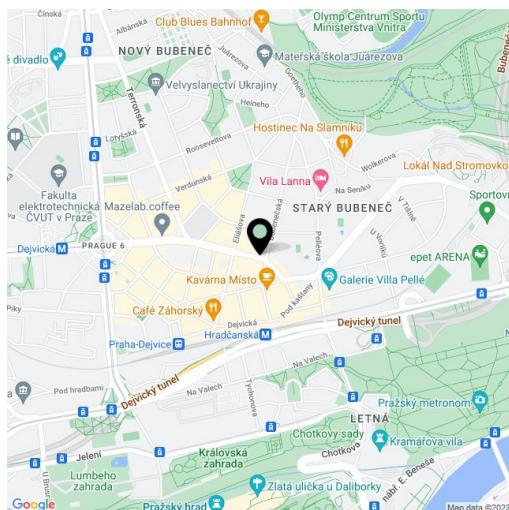
115 m², Prague 6, Bubeneč, Čs. armády

Total area	115 m²
Parking	-
Cellar	Yes
Service price	Deposit for services and water CZK 3,000/month. Electricity - transfer to the tenant.
PENB	G
Reference number	43807
Available from	Immediately

This renovated, furnished 2-bedroom apartment is on the third floor of a well-maintained corner building with no elevator. Beautifully located in a highly sought-after green residential neighborhood in Prague 6, boasting many foreign embassies, just a one-minute walk from the Hradčanská metro station and complete amenities, within walking distance of Prague Castle and the Stromovka and Letenské Sady parks. Convenient access to the airport and numerous international schools.

The interior features a living room with **bay windows**, a fully fitted eat-in kitchen, 2 bedrooms facing a quiet courtyard, a shower room with a toilet, a storage room, a guest toilet, and an entrance hall with built-in wardrobes.

Hardwood parquet floors, tiles, high ceilings, large windows, two preserved ceramic **Dutch stoves**, built-in storage, security entry door, electric boiler, washing machine, custom-made kitchen, Siemens kitchen appliances, dishwasher, induction cooktop, microwave oven.



* Area of the unit according to the Civil Code. The area consists of the sum total area of the entire unit bounded by perimeter walls.